



























ANNEXE 1



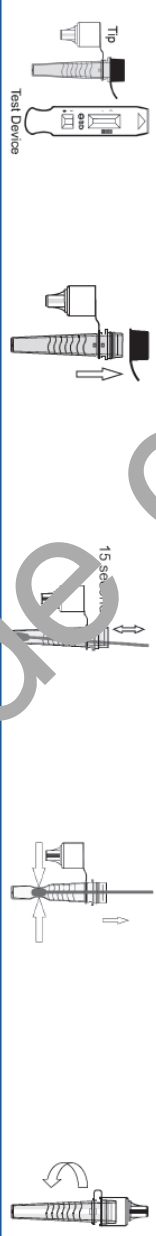
**Quick Reference Instructions for BD Veritor™ SARS-CoV-2  
 Use of BD Veritor™ SARS-CoV-2 for Rapid Detection of SARS-CoV-2 with the BD Veritor™ Plus Analyzer**

REF 256089

Read the complete test procedure, including recommended QC procedures before performing the test. Refer to the package insert for complete information about the test. Ensure ALL components are at room temperature (15-30 °C) when running the test.

**Sample preparation**

- 1** Gather test materials and label test device with specimen ID.
- 2** Remove cap from extraction reagent tube.
- 3** Insert patient sample swab and vigorously plunge the swab up and down for 15 seconds.
- 4** Remove swab while squeezing tube to extract liquid. Properly dispose of swab.
- 5** Press dispensing tip on the tube firmly. Mix the sample by flicking or swirling the bottom of the tube.



**Using the BD Veritor Plus Analyzer to read the assay device**

ANALYZE NOW MODE		WALK AWAY MODE (instrument must be plugged in)	
<b>6</b>	Add 3 drops of the processed sample to the test device sample well.		
<b>7</b>	Allow test to develop for 15 minutes. <b>CAUTION:</b> Incorrect results may occur if development time is less than 15 minutes. Cover test device if working in a drafty environment.		Optional: If using the barcode scanning accessory, follow screen prompts to scan any required barcodes.
<b>8</b>	When test is ready, power on instrument by pressing blue start button once. When prompted, insert test device to read.		Optional: If using the barcode scanning accessory, follow screen prompts to scan any required barcodes. <b>Do not touch instrument during analysis. Keep level.</b>
<b>9</b>	Result will appear on screen. Record result and remove test device. Properly dispose of test device.		Result will appear on the screen after analysis is complete (15 minutes). Record result, remove test device and discard properly. Instrument reverts to Analyze Now mode when test device is removed.