



Methicillin-Resistant Staphylococcus aureus Bloodstream Infections

Surveillance results: 2016-2017

From April 1st, 2016 to March 31st, 2017, 89 healthcare facilities participated in the surveillance of methicillin-resistant *Staphylococcus aureus* (MRSA) bloodstream infections, for a combined total of 4,835,605 patient days (Table 1). Together, these facilities reported 66 cases of healthcare-associated MRSA bloodstream infections (HA-MRSA-BSI) acquired during a current or previous hospitalization (categories 1a and 1b). The HA-MRSA-BSI incidence rate was 0.14 per 10,000 patient days. While this incidence rate has been declining for the past five years, this year was comparable to the last one. The proportion of methicillin resistance in healthcare-associated *S. aureus* bloodstream infections was 12.1%. Data were extracted on June 1st, 2017. For all results, analyses include facilities that participated a minimum of 11 periods. The new healthcare facility categories established in 2015-2016 based on the teaching vocation, the number of beds and the proportion of admitted patients aged 65 years and older were maintained this year and applied to prior years when used for comparisons.

Table 1 - Participation of Healthcare Facilities in the Surveillance of MRSA Bloodstream Infections, Québec, 2012-2013 to 2016-2017

	2012-2013	2013-2014	2014-2015	2015-2016	2016-2017
Facilities (N)	88	87	89	89	89
Admissions (N)	639,647	636,379	644,643	660,071	677,936
Patient days (N)	5,005,289	4,837,194	4,856,680	4,849,915	4,835,605
MRSA bloodstream infections					
Healthcare-associated (cat. 1a and 1b) (N)	147	95	97	65	66
Total (cat. 1a. 1b. 1c. 1d. 2. 3 and 4) (N)	300	253	264	258	232
<i>S. aureus</i> bloodstream infection					
Healthcare-associated (cat. 1a and 1b) (N)	660	522	528	505	492
Total (cat. 1a. 1b. 1c. 1d. 2. 3 and 4) (N)	1,941	1,773	1,908	2,063	2,052

Open all

Incidence rates

In 2016-2017, the HA-MRSA-BSI incidence rate is 0.14 per 10,000 patient days (Table 2). No HA-MRSA-BSI is reported in pediatric facilities.

Table 2 - Percentile Distribution and Incidence Rate of Healthcare-Associated MRSA Bloodstream Infections (cat. 1a and 1b) by type of Healthcare Facility, Québec, 2016-2017 (Incidence Rate per 10,000 Patient Days [95% CI])

Type of healthcare facility	Min.	25%	50%	75%	90 %	Max.	Incidence rate [95% CI]
Non-teaching facilities							
< 110 beds (N = 32)	0	0	0	0	0.56	1.32	0.13 [0.06 ; 0.29]
≥ 110 beds (N = 31)	0	0	0	0.14	0.33	0.85	0.11 [0.07 ; 0.17]
Teaching facilities (N = 24)	0	0	0.10	0.18	0.35	1.19	0.17 [0.12 ; 0.23]
Pediatric facilities (N = 2)	0	0	0	0	0	0	0
Total (N = 89)	0	0	0	0.14	0.43	1.32	0.14 [0.11 ; 0.18]

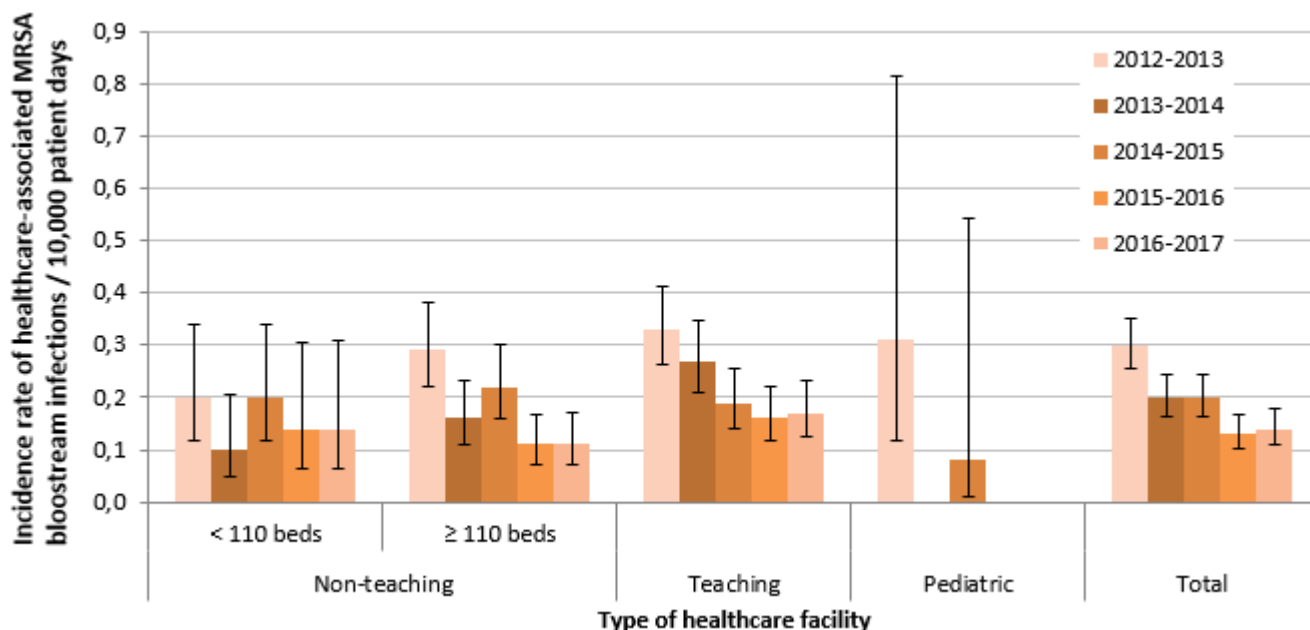
Note: When the incidence rate is 0, the confidence interval [CI] is not calculated

Incidence rate trends

The HA-MRSA-BSI incidence rate decreased in the past eleven years (Figures 1 and 2). It dropped from 0.54 per 10,000 patient days during the first year of mandatory surveillance (2006-2007) to 0.28 in 2012-2013, to reach 0.14 in 2016-2017.

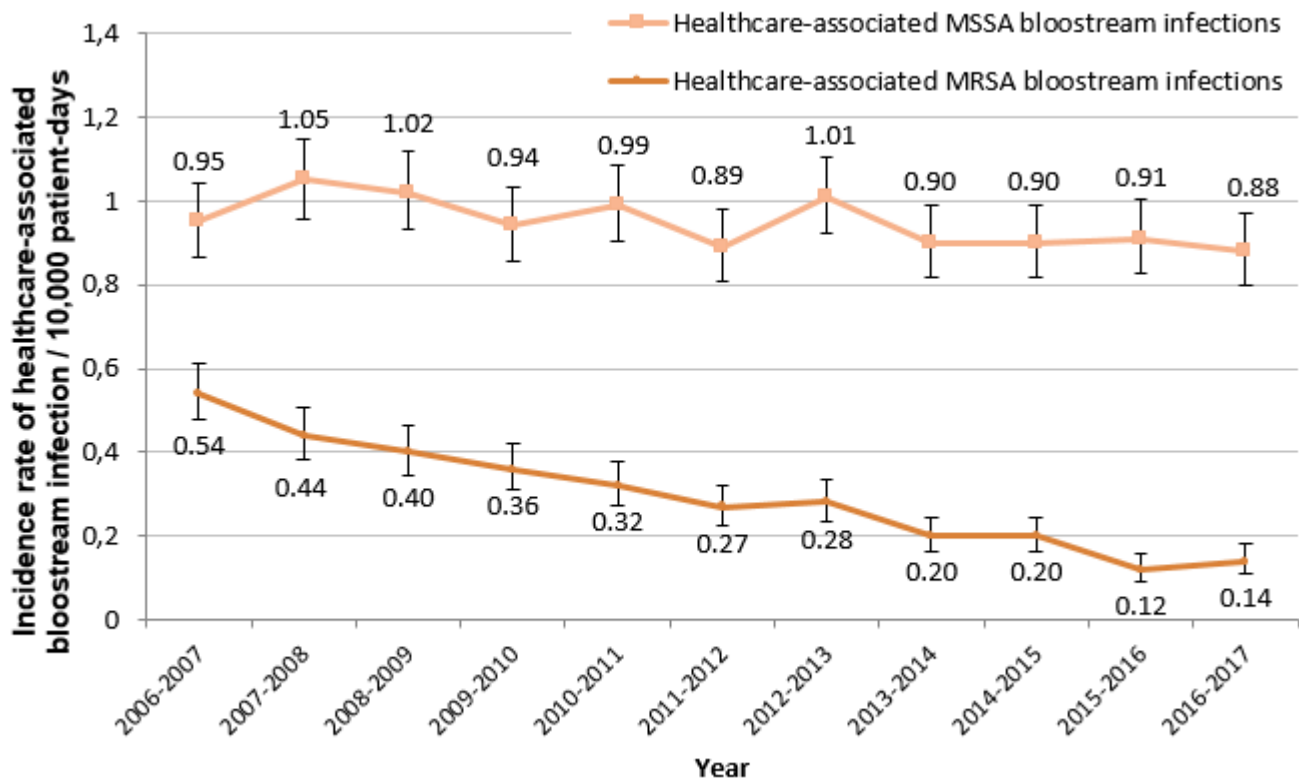
Incidence rates of healthcare-associated methicillin-sensitive *Staphylococcus aureus* bloodstream infections (HA-MSSA-BSI) were stable over the same period, ranging from 0.95 to 1.01 per 10,000 patient days between 2006-2007 and 2012-2013 and is now 0.88 in 2016-2017.

Figure 1 - Incidence Rate of Healthcare-associated MRSA (cat. 1a and 1b), by Type of Healthcare Facility, Québec, 2012-2013 to 2016-2017 (Incidence Rate per 10,000 Patient-Days [95% CI])



[2]

Figure 2 - Incidence Rate of Healthcare-associated Methicillin-Resistant (MRSA) and Methicillin-Sensitive (MSSA) *Staphylococcus aureus* Bloodstream Infections (cat. 1a and 1b) for Participating Healthcare Facilities, Québec, 2006-2007 to 2016-2017 (Incidence Rate per 10,000 Patient Days [95% CI]) (N = 82)



[3]

Note: data are from healthcare facilities that participated in the surveillance from 2006-2007 to 2016-2017 and a minimum of 11 periods between 2007-2008 and 2016-2017.

Note: Since April 1st 2013, a MRSA-BSI is considered as healthcare-associated if it occurs up to two days after discharge. Prior to this date, a delay of one month after discharge is considered to include a MRSA-BSI as healthcare-associated.

Table 3 - Incidence Rate of Healthcare-associated MRSA Bloodstream Infections (cat. 1a and 1b) by Type of Healthcare Facility for Participating Healthcare Facilities, Québec, 2012-2013 to 2016-2017 (Incidence Rate per 10,000 Patient Days [95% CI]) (N = 85)

Facilities	2012-2013	2013-2014	2014-2015	2015-2016	2016-2017
Non-teaching					
< 110 beds (N = 30)	0.20 [0.12 ; 0.34]	0.10 [0.05 ; 0.21]	0.20 [0.12 ; 0.34]	0.14 [0.06 ; 0.30]	0.14 [0.06 ; 0.31]
≥ 110 beds (N = 30)	0.29 [0.22 ; 0.38]	0.16 [0.11 ; 0.23]	0.22 [0.16 ; 0.30]	0.11 [0.07 ; 0.17]	0.11 [0.07 ; 0.17]
Teaching (N = 23)	0.33 [0.26 ; 0.41]	0.27 [0.21 ; 0.35]	0.19 [0.14 ; 0.26]	0.16 [0.12 ; 0.22]	0.17 [0.12 ; 0.23]
Pediatric (N = 2)	0.31 [0.12 ; 0.81]	0	0.08 [0.01 ; 0.54]	0	0
Total (N = 85)	0.30 [0.26 ; 0.35]	0.20 [0.16 ; 0.24]	0.22 [0.16 ; 0.24]	0.13 [0.10 ; 0.17]	0.14 [0.11 ; 0.18]

Note: When the incidence rate is 0, the confidence interval [CI] is not calculated.

Number of cases

A total of 232 cases of MRSA bloodstream infections are reported, of which 109 (47.0%) are healthcare-associated (cat. 1a, 1b, 1c, 1d, 2) and 86 (37.1%) are related to the reporting facility (cat. 1a, 1b, 1c, 1d) (Table 4)

Table 4 - Cases of MRSA and *S. aureus* Bloodstream Infections by Presumed Origin of Acquisition, Québec, 2016-2017 (N, %)

Category	Source of acquisition	2016-2017			
		MRSA		<i>S. aureus</i>	
		N	%*	N	%*
1a	Healthcare-associated with a current hospitalization in the reporting facility	61	3	416	20.3
1b	Healthcare-associated with a previous hospitalization in the reporting facility	5	0.2	76	3.7
1c	Healthcare-associated with ambulatory care in the reporting facility	15	0.7	179	8.7
1d	Healthcare-associated with long term care unit in the reporting facility	5	0.2	29	1.4
2	Healthcare-associated with another facility	23	1.1	76	3.7
3	Community-associated	105	5.1	1 109	54.0
4	Unknown origin of acquisition	18	0.9	167	8.1
Total		232	11.3	2,052	100

* Percentage compared to total *S. aureus*.

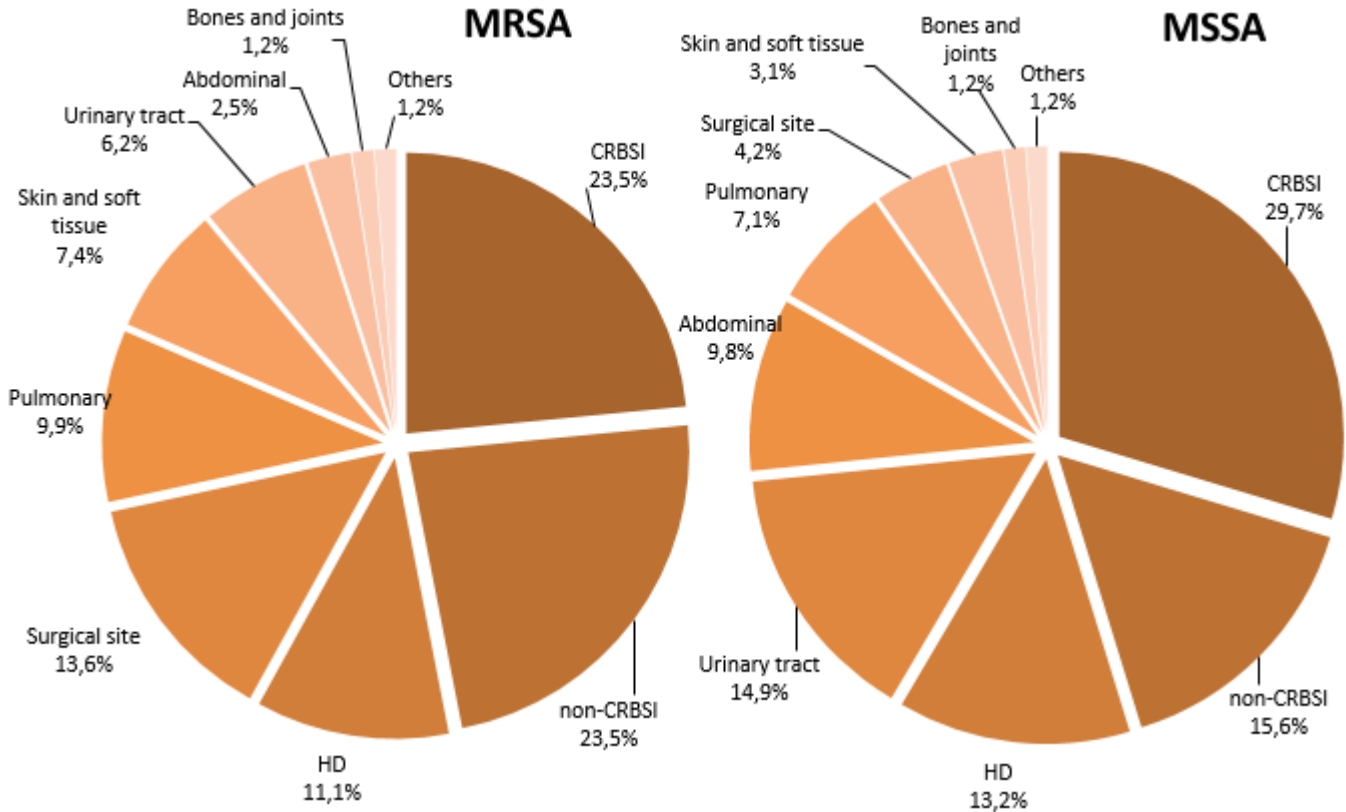
Catheter-related primary bloodstream infection (CRBSI) and non-catheter-related primary bloodstream infection (non-CRBSI) represent the most frequently reported type of infections (23.5%). Primary bloodstream infections (BSI) account for 58.8% of overall all HA-MRSA-BSI (cat. 1a, 1b and 1c) in 2016-2017 (Figure 3 and Table 5). Primary infections having more often led to BSIs are surgical site (13.6%), pulmonary (9.9%) and skin and soft tissue (7.4%) infections.

Overall, there are about as many primary BSIs in teaching (N=23) as in non-teaching facilities (N=24). Almost all surgical site and pulmonary infections occur in teaching facilities. The majority of BSIs secondary to skin and soft tissue infections occur in teaching and non-teaching facilities with 110 beds and more (Table 5).

A total of 18 deaths within 30 days of diagnosis are observed among the 81 HA-MRSA-BSI (cat. 1a, 1b

and 1c), yielding a case fatality of 22.2% (Table 6). This proportion is not statistically and significantly different from the one observed of HA-MSSA-BSI (18.3%).

Figure 3 - Breakdown of Healthcare-Associated MRSA and MSSA Bloodstream Infections (cat. 1a, 1b and 1c) by Type of Infection. Québec, 2016-2017 (MRSA: N = 81; MSSA: N = 590)



[4]

CRBSI : Catheter-related primary bloodstream infection.
 Non-CRBSI : non-catheter-related primary bloodstream infection.
 HD: hemodialysis.

Table 5 - Number of Cases Corresponding to each Type of Infection Associated with Healthcare-Associated MRSA Bloodstream Infections (cat. 1a, 1b and 1c) by Type of Facility. Québec, 2016-2017 (N = 81)

Bloodstream infection evolution	Type of infection	Non-teaching < 110 beds	Non-teaching ≥ 110 beds	Teaching	Pediatric	Total
Primary bloodstream infection	CRBSI	0	10	9	0	19
	Non-CRBSI	3	9	7	0	19
	HD	0	2	7	0	9

	Urinary tract	1	1	3	0	5
	Abdominal	0	0	2	0	2
	Pulmonary	1	1	6	0	8
Secondary bloodstream infection	Surgical site	0	2	9	0	11
	Skin and soft tissue	0	3	3	0	6
	Bones and joints	0	0	1	0	1
	Other sites	1	0	0	0	1
Total		6	28	47	0	81

CRBSI : Catheter-related primary bloodstream infection.

Non-CRBSI : non-catheter-related primary bloodstream infection.

HD: hemodialysis.

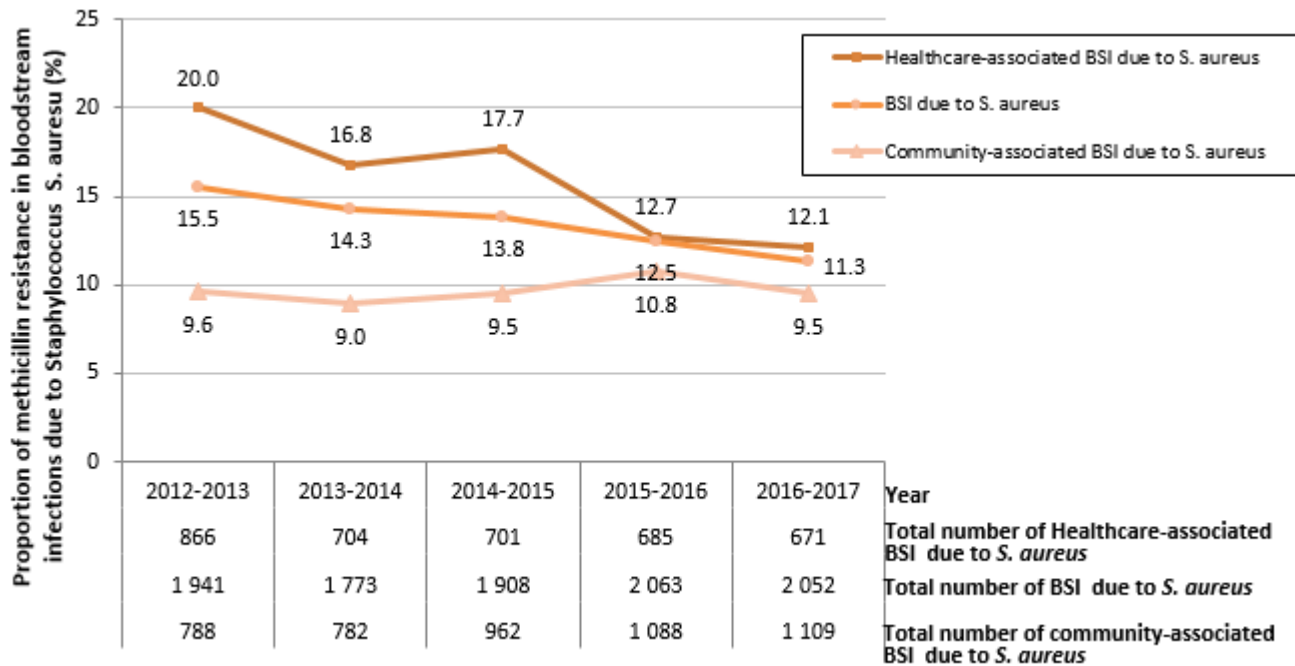
Table 6 - Number of Deaths and 30-days Case Fatality Related to Healthcare-Associated MRSA and MSSA Bloodstream Infections (cat. 1a, 1b and 1c), Québec, 2013-2014 to 2016-2017

	2013-2014	2014-2015	2015-2016	2016-2017
MRSA Healthcare-associated bloodstream infections(N)	118	124	87	81
Number of deaths (N)	38	34	23	18
Case fatality (%)	32.2	27.4	26.4	22.2
MSSA Healthcare-associated bloodstream infections(N)	586	577	598	590
Number of deaths (N)	116	140	113	108
Case fatality (%)	19.8	24.3	18.9	18.3

Microbiology

The proportion of methicillin resistance in healthcare-associated bloodstream infections due to *S. aureus* decreased gradually from 2012-2013, reaching 12.1% in 2016-2017 (Figure 4).

Figure 4 - Proportion of Methicillin Resistance in Healthcare-Associated Bloodstream Infections (cat. 1a, 1b and 1c) and all Bloodstream Infections (cat. 1a, 1b, 1c, 1d, 2, 3 and 4), Québec, 2012-2013 to 2016-2017 (N = 85)



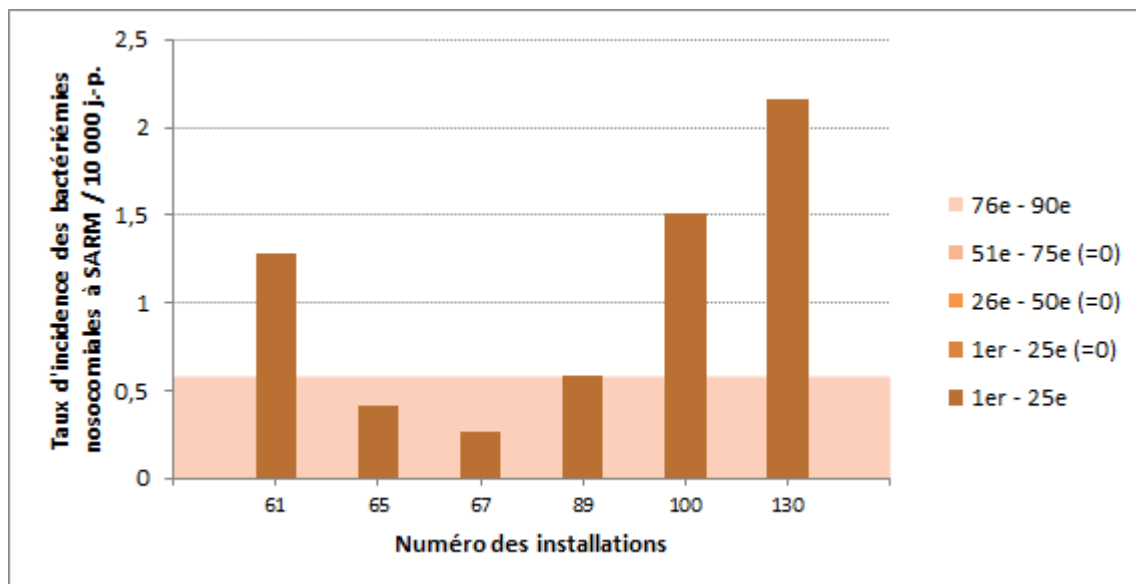
[5]

BSI: Bloodstream infections

Data per healthcare facility

The incidence rate of HA-MRSA-BSI and percentile ranking by type of facility are shown in Figures 5 through 8.

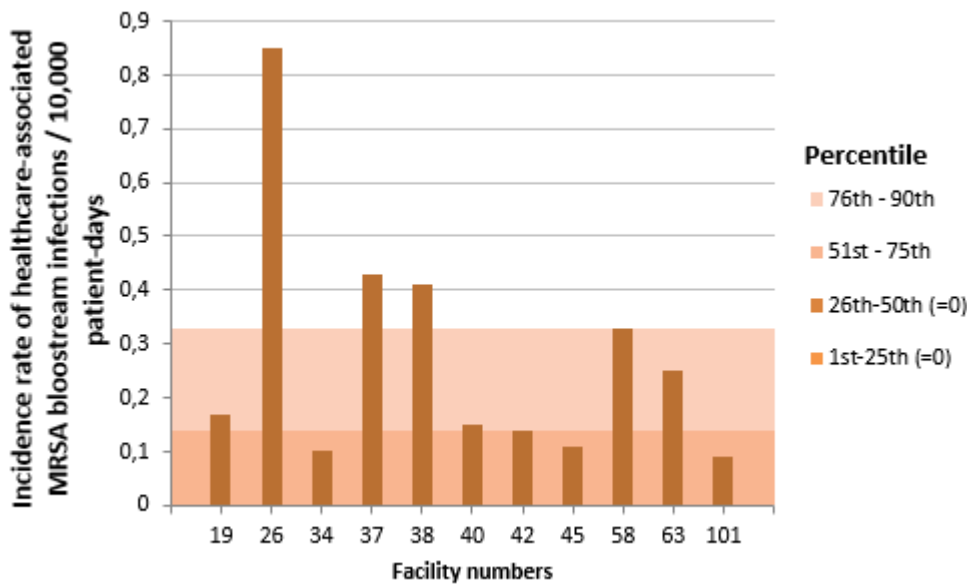
Figure 5 - Incidence Rate and Percentile Ranking of Healthcare-associated MRSA Bloodstream Infections (cat. 1a and 1b) by Facility for non-Teaching Healthcare Facilities with Less than 110 Beds, Québec, 2016-2017



[6]

NB: Facilities 49, 51, 52, 53, 56, 59, 64, 70, 71, 74, 75, 77, 82, 84, 86, 89, 91, 95, 96, 99, 100, 103, 107, 109, 111 and 130 did not report any cases in 2016-2017

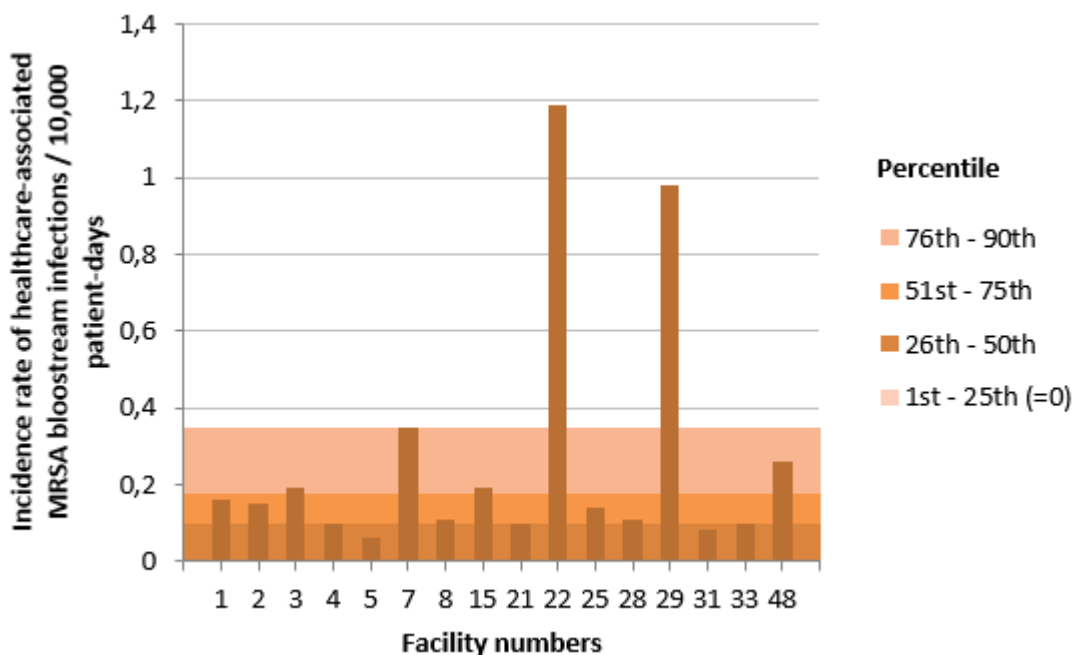
Figure 6 - Incidence Rate and Percentile Ranking of Healthcare-associated MRSA Bloodstream Infections (cat. 1a and 1b) by Facility for non-Teaching Healthcare Facilities with 110 and more Beds, Québec, 2016-2017



[7]

NB: Facilities 9, 10, 11, 14, 16, 23, 32, 35, 36, 39, 41, 44, 46, 47, 72, 80, 83, 88, 112 and 113 did not report any cases in 2016-2017

Figure 7 - Incidence Rate and Percentile Ranking of Healthcare-associated MRSA Bloodstream Infections (cat. 1a and 1b) by Facility for Teaching Healthcare Facilities, Québec, 2016-2017



[8]

NB: Facilities 13, 18, 20, 24, 27, 30, 76 and 118 did not report any cases in 2016-2017.

Figure 8 - Incidence Rate and Percentile Ranking of Healthcare-associated MRSA Bloodstream Infections (cat. 1a and 1b) by Facility for Pediatric Healthcare Facilities, Québec, 2016-2017

NB: Facilities 6 and 12 did not report any cases in 2016-2017.

At the local level, in 2016-2017, the incidence rate of HA-MRSA-BSI ranges from 0 to 1.32 per 10,000 patient days. The incidence rates of the past five years of surveillance are shown in Table 7.

In summary, the healthcare facilities, health regions and province did not experience statistically different changes in their HA-MRSA-BSI incidence rate compared to 2015-2016.

Table 8 presents the number of healthcare-associated MRSA bloodstream infections and the proportion of methicillin resistance in healthcare-associated *S. aureus* bloodstream infections of the past five years.

Table 7 - Incidence rate of Healthcare-associated MRSA Bloodstream Infections (cat. 1a and 1b) by Facility, Québec, 2012-2013 to 2016-2017 (Incidence Rate per 10,000 Patient Days [95% CI])

HR	Facility Number	Name	Incidence rate of healthcare-associated MRSA bloodstream infections per /10,000 patient days [95% CI]				
			2012-2013	2013-2014	2014-2015	2015-2016	2016-2017
	16	HOPITAL REGIONAL DE RIMOUSKI	0	0	0.19 [0.03 ; 1.36]	0.18 [0.02 ; 1.30]	0
	32	CENTRE HOSPITALIER REGIONAL DU GRAND-PORTAGE	0.32 [0.05 ; 2.26]	0	0	0	0
1	61	HOPITAL NOTRE-DAME-DE-FATIMA	0	0	0	1.28 [0.18 ; 9.11]	1.26 [0.18 ; 8.93]
	71	HOPITAL DE MATANE	0	0	0	0	0
	77	HOPITAL D'AMQUI	0	0	0	0	0
	84	HOPITAL DE NOTRE-DAME-DU-LAC	0	0	0	0	0
		BAS-SAINT-LAURENT	0.08 [0.01 ; 0.57]	0	0.08 [0.01 ; 0.63]	0.17 [0.04 ; 0.66]	0.09 [0.01 ; 0.61]
	20	HOPITAL DE CHICOUTIMI	0.22 [0.06 ; 0.87]	0	0.12 [0.02 ; 0.88]	0	0
	67	HOPITAL ET CENTRE DE READAPTATION DE JONQUIERE	0.25 [0.03 ; 1.80]	0	0	0.27 [0.04 ; 1.95]	0.26 [0.04 ; 1.83]
2	74	HOPITAL DE DOLBEAU-MISTASSINI	0	0	0	0	0
	88	HOPITAL. CLSC ET CENTRE D'HEBERGEMENT DE ROBERVAL	0	0	0	0	0
	100	HOPITAL DE LA BAIE	-	-	0	1.51 [0.38 ; 6.04]	0
	112	HOPITAL D'ALMA	0	0	0	0	0
		SAGUENAY-LAC-SAINT-JEAN	0.14 [0.04 ; 0.44]	0	0.05 [0.01 ; 0.33]	0.15 [0.05 ; 0.46]	0.05 [0.01 ; 0.37]
	2	HOPITAL DE L'ENFANT-JESUS	0.07 [0.01 ; 0.54]	0.44 [0.20 ; 0.98]	0.08 [0.01 ; 0.51]	0.08 [0.01 ; 0.54]	0.15 [0.04 ; 0.62]
	7	PAVILLON L'HOTEL-DIEU DE QUEBEC	0.47 [0.18 ; 1.25]	0.23 [0.06 ; 0.92]	0.72 [0.33 ; 1.59]	0.12 [0.02 ; 0.80]	0.35 [0.11 ; 1.10]
	24	HOPITAL DU SAINT-SACREMENT	0.17 [0.02 ; 1.27]	0	0	0	0
3	27	PAVILLON CENTRE HOSPITALIER DE L'UNIVERSITE LAVAL	0	0	0	0	0
	28	PAVILLON SAINT-FRANCOIS D'ASSISE	0.67 [0.30 ; 1.48]	0.22 [0.05 ; 0.88]	0.11 [0.02 ; 0.80]	0.34 [0.11 ; 1.05]	0.11 [0.01 ; 0.81]
	33	INSTITUT UNIV. DE CARDIOL. ET DE PNEUMO. DE QUEBEC	0.20 [0.05 ; 0.82]	0	0	0	0.10 [0.01 ; 0.72]
	59	HOPITAL DE BAIE-SAINT-PAUL	-	-	0	0	0
	86	HOPITAL DE LA MALBAIE	0	0	0	0	0
		CAPITALE-NATIONALE	0.23 [0.14 ; 0.39]	0.17 [0.09 ; 0.31]	0.13 [0.06 ; 0.27]	0.08 [0.03 ; 0.20]	0.12 [0.06 ; 0.25]
	23	HOTEL-DIEU D'ARTHABASKA	0.18 [0.02 ; 1.32]	0	0	0	0
	31	PAVILLON SAINTE-MARIE	0.16 [0.04 ; 0.62]	0	0	0	0.08 [0.01 ; 0.56]
4	41	HOPITAL DU CENTRE-DE-LA-MAURICIE	0	0	0.21 [0.03 ; 1.45]	0.21 [0.03 ; 1.53]	0
	44	HOPITAL SAINTE-CROIX	0.34 [0.08 ; 1.36]	0.34 [0.08 ; 1.37]	-	0	0
	85	CSSS DU HAUT-SAINT-AURICE	0	0	0	0	1.32 [0.19 ; 9.31]
		MAURICIE ET CENTRE-DU-QUÉBEC	0.17 [0.07 ; 0.41]	0.07 [0.02 ; 0.27]	0.04 [0.00 ; 0.32]	0.03 [0.00 ; 0.29]	0.07 [0.02 ; 0.27]
	15	HOPITAL FLEURIMONT	0.17 [0.04 ; 0.70]	0.18 [0.04 ; 0.75]	0.19 [0.05 ; 0.74]	0	0.19 [0.05 ; 0.76]
	30	HOTEL-DIEU DE SHERBROOKE	0.14 [0.02 ; 1.06]	0.15 [0.02 ; 1.07]	0.15 [0.02 ; 1.04]	0	0
5	46	HOPITAL DE GRANBY	0.94 [0.35 ; 2.51]	0	0	0	0
	49	CSSS DE MEMPHREMAGOG	0	0	0	0	0
	75	CSSS DU GRANIT	0	0	1.30 [0.18 ; 9.22]	0	0
	99	HOPITAL BROME-MISSISQUOI-PERKINS	0	0	0.36 [0.05 ; 2.52]	0	0
		ESTRIE	0.25 [0.12 ; 0.52]	0.11 [0.04 ; 0.35]	0.18 [0.07 ; 0.44]	0	0.07 [0.02 ; 0.30]

HR	Facility Number	Name	Incidence rate of healthcare-associated MRSA bloodstream infections per /10,000 patient days [95% CI]				
			2012-2013	2013-2014	2014-2015	2015-2016	2016-2017
	3	GLEN - ROYAL VICTORIA	0.34 [0.13 ; 0.90]	0.53 [0.24 ; 1.18]	0.18 [0.04 ; 0.73]	0.18 [0.04 ; 0.73]	0.19 [0.05 ; 0.73]
	4	HOPITAL NOTRE-DAME DU CHUM	0.43 [0.18 ; 1.03]	0.50 [0.22 ; 1.12]	0.18 [0.05 ; 0.71]	0.39 [0.15 ; 1.04]	0.10 [0.02 ; 0.66]
	5	HOPITAL GENERAL JUIF	0.29 [0.12 ; 0.69]	0.23 [0.09 ; 0.61]	0.35 [0.16 ; 0.77]	0.18 [0.06 ; 0.55]	0.06 [0.01 ; 0.42]
	6	GLEN - ENFANTS	1.10 [0.41 ; 2.94]	0	0	0	0
	8	PAV. MAISONNEUVE/PAV. MARCEL-LAMOUREUX	0.11 [0.03 ; 0.44]	0.11 [0.03 ; 0.43]	0.27 [0.11 ; 0.65]	0.11 [0.03 ; 0.42]	0.11 [0.03 ; 0.42]
	12	CHU SAINTE-JUSTINE	0	0	0.11 [0.02 ; 0.77]	0	0
	13	INSTITUT DE CARDIOLOGIE DE MONTREAL	0.24 [0.03 ; 1.70]	0.23 [0.03 ; 1.69]	0	0	0
	21	HOPITAL SAINT-LUC DU CHUM	0.50 [0.21 ; 1.20]	-	0.29 [0.09 ; 0.92]	0.49 [0.20 ; 1.19]	0.10 [0.01 ; 0.69]
	22	HOTEL-DIEU DU CHUM	1.12 [0.58 ; 2.16]	0.64 [0.27 ; 1.53]	0.81 [0.36 ; 1.81]	0.44 [0.14 ; 1.36]	1.19 [0.59 ; 2.38]
	25	HOPITAL DU SACRE-COEUR DE MONTREAL	0.52 [0.26 ; 1.04]	0.20 [0.06 ; 0.63]	0.21 [0.07 ; 0.64]	0.28 [0.11 ; 0.74]	0.14 [0.04 ; 0.54]
6	26	HOPITAL DE VERDUN	0.27 [0.07 ; 1.06]	0.28 [0.07 ; 1.10]	0.14 [0.02 ; 0.97]	0.51 [0.19 ; 1.37]	0.85 [0.40 ; 1.78]
	29	HOPITAL GENERAL DE MONTREAL	0.77 [0.38 ; 1.54]	0.90 [0.45 ; 1.79]	0.35 [0.11 ; 1.10]	0.13 [0.02 ; 0.92]	0.98 [0.47 ; 2.05]
	34	HOPITAL SANTA CABRINI	0.66 [0.31 ; 1.39]	0.19 [0.05 ; 0.75]	0.19 [0.05 ; 0.78]	0.19 [0.05 ; 0.76]	0.10 [0.01 ; 0.68]
	36	HOPITAL GENERAL DU LAKESHORE	0.72 [0.30 ; 1.73]	0.29 [0.07 ; 1.19]	0.29 [0.07 ; 1.17]	0.14 [0.02 ; 0.96]	0
	38	HOPITAL JEAN-TALON	0.57 [0.19 ; 1.75]	0.39 [0.10 ; 1.53]	0.19 [0.03 ; 1.36]	0.20 [0.03 ; 1.42]	0.41 [0.10 ; 1.64]
	48	CENTRE HOSPITALIER DE ST. MARY	1.12 [0.58 ; 2.16]	0	0.62 [0.26 ; 1.50]	0.25 [0.06 ; 1.01]	0.26 [0.06 ; 1.06]
	76	HOPITAL DE LACHINE	0	0.52 [0.07 ; 3.63]	1.70 [0.55 ; 5.29]	0.55 [0.08 ; 3.92]	0
	80	HOPITAL FLEURY	0.23 [0.03 ; 1.59]	0.46 [0.12 ; 1.83]	0	0.23 [0.03 ; 1.59]	0
	83	HOPITAL DE LASALLE	0.83 [0.21 ; 3.33]	0	0	0	0
	116	INSTITUT THORACIQUE DE MONTREAL	0.45 [0.06 ; 3.16]	0	0	-	-
	118	HOPITAL NEUROLOGIQUE DE MONTREAL	0	0	0	0	0
		MONTREAL	0.47 [0.38 ; 0.58]	0.29 [0.22 ; 0.39]	0.27 [0.20 ; 0.36]	0.22 [0.16 ; 0.31]	0.22 [0.16 ; 0.31]
	39	HOPITAL DE GATINEAU	0	0	0.33 [0.08 ; 1.33]	0	0
	40	HOPITAL DE HULL	0	0.16 [0.02 ; 1.09]	0.15 [0.02 ; 1.12]	0	0.15 [0.02 ; 1.06]
7	51	HOPITAL DE MANIWAKI	0	0	0	0	0
	95	HOPITAL DU PONTIAC	0.72 [0.10 ; 5.10]	0	0.81 [0.11 ; 5.82]	0	0
	111	HOPITAL DE PAPINEAU	0	0	0	0	0
		OUTAOUAIS	0.05 [0.01 ; 0.43]	0.06 [0.01 ; 0.37]	0.23 [0.09 ; 0.62]	0	0.06 [0.01 ; 0.39]
	47	HOPITAL DE ROUYN-NORANDA	0	1.29 [0.42 ; 3.99]	0.40 [0.06 ; 2.79]	0	0
	52	HOPITAL D'AMOS	0	0	0	0	0
8	65	HOPITAL ET CLSC DE VAL-D'OR	0	0.34 [0.05 ; 2.42]	0.35 [0.05 ; 2.54]	0.41 [0.06 ; 2.92]	0.43 [0.06 ; 3.07]
	70	CENTRE DE SOINS DE COURTE DUREE LA SARRE (CSCD)	0	0	0	0	0
	82	PAVILLON SAINTE-FAMILLE	2.69 [0.67 ; 10.77]	0	0	0	0
		ABITIBI-TÉMISCAMINGUE	0.21 [0.05 ; 0.83]	0.43 [0.16 ; 1.15]	0.21 [0.05 ; 0.86]	0.11 [0.02 ; 0.77]	0.12 [0.02 ; 0.89]
	64	HOPITAL LE ROYER	0.72 [0.18 ; 2.88]	0	0	0	0
9	72	HOPITAL ET CENTRE D'HEBERGEMENT DE SEPT-ILES	0	0.41 [0.06 ; 2.90]	0	0	0
		CÔTE-NORD	0.40 [0.10 ; 1.62]	0.20 [0.03 ; 1.39]	0	0	0
10	96	CENTRE DE SANTE DE CHIBOUGAMAU	0	0	0	0	0
		NORD-DU-QUÉBEC	0	0	0	0	0
	53	HOPITAL DE CHANDLER	0	0	0	0	0
	91	HOPITAL HOTEL-DIEU DE GASPE	0.97 [0.14 ; 6.86]	0.96 [0.13 ; 6.84]	1.00 [0.14 ; 7.15]	0	0
11	97	HOPITAL DE MARIA	0	0	0	0	0.57 [0.08 ; 3.98]
	107	HOPITAL DE L'ARCHIPEL	0	0	0	0	0
	109	HOPITAL DE SAINTE-ANNE-DES-MONTS	0	0	0	0	0
		GASPÉSIE-ÎLES-DE-LA-MADELEINE	0.17 [0.02 ; 1.19]	0.17 [0.02 ; 1.27]	0.17 [0.02 ; 1.17]	0	0.18 [0.02 ; 1.32]
	18	HOTEL-DIEU DE LEVIS	0.13 [0.02 ; 0.87]	0.13 [0.02 ; 0.90]	0	0.13 [0.02 ; 0.98]	0
12	63	HOPITAL DE SAINT-GEORGES	0	0	0	0.25 [0.03 ; 1.84]	0.25 [0.03 ; 1.82]
	89	HOPITAL DE MONTMAGNY	0.47 [0.07 ; 3.36]	0.54 [0.08 ; 3.85]	0	0.58 [0.08 ; 4.06]	0
	113	HOPITAL DE THETFORD MINES	1.09 [0.35 ; 3.39]	0.40 [0.06 ; 2.81]	0	0	0
		CHAUDIÈRE-APPALACHES	0.29 [0.12 ; 0.70]	0.19 [0.06 ; 0.58]	0	0.19 [0.06 ; 0.60]	0.06 [0.01 ; 0.49]
13	19	HOPITAL CITE DE LA SANTE	0.52 [0.27 ; 1.00]	0.35 [0.16 ; 0.78]	0.17 [0.05 ; 0.53]	0.06 [0.01 ; 0.41]	0.17 [0.05 ; 0.54]
		LAVAL	0.52 [0.27 ; 1.00]	0.35 [0.16 ; 0.78]	0.17 [0.05 ; 0.53]	0.06 [0.01 ; 0.41]	0.17 [0.05 ; 0.54]
14	11	HOPITAL PIERRE-LE GARDEUR	0	0.19 [0.05 ; 0.75]	0.18 [0.04 ; 0.72]	0.09 [0.01 ; 0.63]	0
	14	CENTRE HOSPITALIER REGIONAL DE LANAUDIÈRE	0.34 [0.11 ; 1.07]	0.23 [0.06 ; 0.90]	0.21 [0.05 ; 0.84]	0.10 [0.01 ; 0.75]	0
		LANAUDIÈRE	0.16 [0.05 ; 0.50]	0.21 [0.08 ; 0.55]	0.19 [0.07 ; 0.52]	0.10 [0.03 ; 0.38]	0
	45	HOPITAL DE SAINT-EUSTACHE	0.12 [0.02 ; 0.84]	0	0.33 [0.11 ; 1.03]	0.11 [0.01 ; 0.81]	0.11 [0.02 ; 0.79]
	56	CSSS D'ARGENTEUIL	0	0.71 [0.10 ; 5.07]	0	0	0
15	81	HOPITAL DE MONT-LAURIER	0	0	0	0	0.56 [0.08 ; 4.03]
	101	HOPITAL REGIONAL DE SAINT-JEROME	0.29 [0.10 ; 0.88]	0.19 [0.05 ; 0.74]	0.35 [0.13 ; 0.94]	0.09 [0.01 ; 0.65]	0.09 [0.01 ; 0.67]
	103	HOPITAL LAURENTIEN	0	0	0	0	0
		LAURENTIDES	0.16 [0.06 ; 0.43]	0.12 [0.04 ; 0.37]	0.27 [0.13 ; 0.57]	0.08 [0.02 ; 0.30]	0.11 [0.03 ; 0.36]

HR	Facility		Incidence rate of healthcare-associated MRSA bloodstream infections per /10,000 patient days [95% CI]				
	Number	Name	2012-2013	2013-2014	2014-2015	2015-2016	2016-2017
	1	HOPITAL CHARLES LEMOYNE	0	0.24 [0.08 ; 0.74]	0	0.16 [0.04 ; 0.62]	0.16 [0.04 ; 0.62]
	9	HOPITAL DU HAUT-RICHELIEU	0.43 [0.16 ; 1.16]	0.22 [0.06 ; 0.87]	0.12 [0.02 ; 0.81]	0	0
	10	HOPITAL PIERRE-BOUCHER	0	0.19 [0.05 ; 0.78]	0.19 [0.05 ; 0.74]	0.18 [0.04 ; 0.73]	0
16	35	HOPITAL HONORE-MERCIER	0.44 [0.14 ; 1.37]	0	0.58 [0.22 ; 1.54]	0	0
	37	HOTEL-DIEU DE SOREL	0.20 [0.03 ; 1.38]	0	0.21 [0.03 ; 1.43]	0	0.43 [0.11 ; 1.69]
	42	CENTRE HOSPITALIER ANNA-LABERGE	0.13 [0.02 ; 0.95]	0.39 [0.13 ; 1.19]	0.54 [0.20 ; 1.43]	0.27 [0.07 ; 1.08]	0.14 [0.02 ; 0.93]
	58	HOPITAL DU SUROIT	0	0.16 [0.02 ; 1.09]	0.53 [0.17 ; 1.66]	0	0.33 [0.08 ; 1.33]
	130	HOPITAL BARRIE MEMORIAL	0	0	0	2.16 [0.70 ; 6.70]	0
		MONTÉRÉGIE	0.15 [0.08 ; 0.29]	0.19 [0.11 ; 0.34]	0.26 [0.16 ; 0.43]	0.16 [0.08 ; 0.30]	0.12 [0.06 ; 0.25]
		Total	0.29 [0.25 ; 0.34]	0.20 [0.16 ; 0.24]	0.20 [0.16 ; 0.24]	0.13 [0.10 ; 0.17]	0.14 [0.11 ; 0.18]

HR: Health region

When the incidence rate is 0, the confidence interval [CI] is not calculated.

- Facilities that did not participate in the surveillance or that participated less than 11 periods

Table 8 - Number of Healthcare-associated MRSA Bloodstream Infections and Proportion of Resistance to Methicillin by Healthcare-Associated *S. aureus* Bloodstream Infection (cat. 1a and 1b) by Facility, Québec, 2012-2013 to 2016-2017 (Number, [%])

HR	Facility		Number of healthcare-associated MRSA bloodstream infections and proportion of resistance to methicillin by healthcare-associated <i>S. aureus</i> bloodstream infections (N [%])				
	Number	Name	2011-2012	2012-2013	2013-2014	2014-2015	2015-2016
	16	HOPITAL REGIONAL DE RIMOUSKI	0/6 (0 %)	0/7 (0 %)	1/4 (25 %)	1/7 (14.3 %)	0/4 (0 %)
	32	CENTRE HOSPITALIER REGIONAL DU GRAND-PORTAGE	1/2 (50 %)	0/2 (0 %)	0/1 (0 %)	0/2 (0 %)	0/2 (0 %)
1	61	HOPITAL NOTRE-DAME-DE-FATIMA	0	0	0	1/2 (50 %)	1/2 (50 %)
	71	HOPITAL DE MATANE	0	0	0	0	0/1 (0 %)
	77	HOPITAL D'AMQUI	0	0	0	0	0
	84	HOPITAL DE NOTRE-DAME-DU-LAC	0	0/1 (0 %)	0	0	0
			BAS-SAINT-LAURENT	1/8 (12.5 %)	0/10 (0 %)	1/5 (20.0 %)	2/11 (18.2 %)
	20	HOPITAL DE CHICOUTIMI	2/18 (11.1 %)	0/17 (0 %)	1/12 (8.3 %)	0/8 (0 %)	0/7 (0 %)
	67	HOPITAL ET CENTRE DE READAPTATION DE JONQUIERE	1/1 (100 %)	0/1 (0 %)	0/2 (0 %)	1/4 (25 %)	1/2 (50 %)
2	74	HOPITAL DE DOLBEAU-MISTASSINI	0/1 (0 %)	0/2 (0 %)	1/2 (50 %)	0/1 (0 %)	0
	88	HOPITAL. CLSC ET CENTRE D'HEBERGEMENT DE ROBERVAL	0/2 (0 %)	0/2 (0 %)	1/3 (33.3 %)	0/2 (0 %)	0/1 (0 %)
	100	HOPITAL DE LA BAIE	-	-	0	2/2 (100 %)	0
	112	HOPITAL D'ALMA	0	0	0/2 (0 %)	0/2 (0 %)	0/2 (0 %)
		SAGUENAY-LAC-SAINT-JEAN	3/22 (13.6 %)	0/22 (0 %)	3/21 (14.3 %)	3/19 (15.8 %)	1/12 (8.3 %)
	2	HOPITAL DE L'ENFANT-JESUS	1/31 (3.2 %)	6/23 (26.1 %)	1/17 (5.9 %)	1/20 (5 %)	2/14 (14.3 %)
	7	PAVILLON L'HOTEL-DIEU DE QUEBEC	4/29 (13.8 %)	3/22 (13.6 %)	6/20 (30 %)	1/23 (4.3 %)	4/18 (22.2 %)
	24	HOPITAL DU SAINT-SACREMENT	1/4 (25 %)	0/2 (0 %)	0/2 (0 %)	0/3 (0 %)	0
3	27	PAVILLON CENTRE HOSPITALIER DE L'UNIVERSITE LAVAL	0/6 (0 %)	0/10 (0 %)	0/6 (0 %)	0/5 (0 %)	0/5 (0 %)
	28	PAVILLON SAINT-FRANCOIS D'ASSISE	6/9 (66.7 %)	2/14 (14.3 %)	2/10 (20 %)	3/14 (21.4 %)	1/9 (11.1 %)
	33	INSTITUT UNIV. DE CARDIOL. ET DE PNEUMO. DE QUEBEC	2/8 (25 %)	0/10 (0 %)	0/8 (0 %)	0/8 (0 %)	1/10 (10 %)
	59	HOPITAL DE BAIE-SAINT-PAUL	-	-	0	0	0
	86	HOPITAL DE LA MALBAIE	0	0	0	0	0
		CAPITALE-NATIONALE	14/87 (16.1 %)	11/81 (13.6 %)	9/63 (14.3 %)	5/73 (6.8 %)	8/56 (14.3 %)
	23	HOTEL-DIEU D'ARTHABASKA	1/2 (50 %)	0/4 (0 %)	0/2 (0 %)	0/3 (0 %)	0/2 (0 %)
	31	PAVILLON SAINTE-MARIE	2/13 (15.4 %)	0/17 (0 %)	1/15 (6.7 %)	1/17 (5.9 %)	1/22 (4.5 %)
4	41	HOPITAL DU CENTRE-DE-LA-MAURICIE	0/1 (0 %)	0/1 (0 %)	1/5 (20 %)	1/5 (20 %)	0/1 (0 %)
	44	HOPITAL SAINTE-CROIX	2/5 (40 %)	2/5 (40 %)	-	0/3 (0 %)	0/4 (0 %)
	85	CSSS DU HAUT-SAINT-AURICE	0	0	0	0	1/1 (100 %)
		MAURICIE ET CENTRE-DU-QUEBEC	5/21 (23.8 %)	2/27 (7.4 %)	2/22 (9.1 %)	2/28 (7.1 %)	2/30 (6.7 %)

HR	Facility		Number of healthcare-associated MRSA bloodstream infections and proportion of resistance to methicillin by healthcare-associated <i>S. aureus</i> bloodstream infections (N [%])				
	Number	Name	2011-2012	2012-2013	2013-2014	2014-2015	2015-2016
5	15	HOPITAL FLEURIMONT	2/20 (10 %)	3/23 (13 %)	2/29 (6.9 %)	0/21 (0 %)	2/28 (7.1 %)
	30	HOTEL-DIEU DE SHERBROOKE	1/7 (14.3 %)	2/6 (33.3 %)	1/6 (16.7 %)	0/6 (0 %)	1/6 (16.7 %)
	46	HOPITAL DE GRANBY	4/12 (33.3 %)	0/3 (0 %)	0/3 (0 %)	0/7 (0 %)	0/2 (0 %)
	49	CSSS DE MEMPHREMAGOG	0/2 (0 %)	0	0/1 (0 %)	0	0/1 (0 %)
	75	CSSS DU GRANIT	0	0/1 (0 %)	1/2 (50 %)	0	0
	99	HOPITAL BROME-MISSISQUOI-PERKINS	0/1 (0 %)	0	2/4 (50 %)	0/1 (0 %)	0/2 (0 %)
		ESTRIE	7/42 (16.7 %)	5/33 (15.2 %)	6/45 (13.3 %)	0/35 (0 %)	3/39 (7.7 %)
	3	GLEN - ROYAL VICTORIA	8/36 (22.2 %)	8/34 (23.5 %)	3/18 (16.7 %)	2/21 (9.5 %)	3/32 (9.4 %)
	4	HOPITAL NOTRE-DAME DU CHUM	6/24 (25 %)	7/34 (20.6 %)	2/28 (7.1 %)	5/27 (18.5 %)	2/29 (6.9 %)
	5	HOPITAL GENERAL JUIF	5/29 (17.2 %)	7/30 (23.3 %)	8/36 (22.2 %)	3/25 (12 %)	5/36 (13.9 %)
6	6	GLEN - ENFANTS	4/11 (36.4 %)	0/9 (0 %)	0/7 (0 %)	0/10 (0 %)	0/10 (0 %)
	8	PAV. MAISONNEUVE/PAV. MARCEL-LAMOUREUX	2/36 (5.6 %)	3/24 (12.5 %)	6/25 (24 %)	5/28 (17.9 %)	2/33 (6.1 %)
	12	CHU SAINTE-JUSTINE	0/14 (0 %)	0/12 (0 %)	1/8 (12.5 %)	0/10 (0 %)	0/9 (0 %)
	13	INSTITUT DE CARDIOLOGIE DE MONTREAL	1/4 (25 %)	1/8 (12.5 %)	0/9 (0 %)	0/7 (0 %)	0/10 (0 %)
	21	HOPITAL SAINT-LUC DU CHUM	6/26 (23.1 %)	0	3/13 (23.1 %)	6/20 (30 %)	2/23 (8.7 %)
	22	HOTEL-DIEU DU CHUM	9/27 (33.3 %)	5/26 (19.2 %)	6/24 (25 %)	3/15 (20 %)	8/30 (26.7 %)
	25	HOPITAL DU SACRE-COEUR DE MONTREAL	10/60 (16.7 %)	4/26 (15.4 %)	5/42 (11.9 %)	6/40 (15 %)	2/30 (6.7 %)
	26	HOPITAL DE VERDUN	4/12 (33.3 %)	2/10 (20 %)	1/10 (10 %)	6/12 (50 %)	7/19 (36.8 %)
	29	HOPITAL GENERAL DE MONTREAL	10/36 (27.8 %)	9/28 (32.1 %)	8/39 (20.5 %)	1/20 (5 %)	7/25 (28 %)
	34	HOPITAL SANTA CABRINI	8/17 (47.1 %)	3/6 (50 %)	2/5 (40 %)	2/12 (16.7 %)	1/6 (16.7 %)
	36	HOPITAL GENERAL DU LAKESHORE	7/11 (63.6 %)	2/6 (33.3 %)	2/7 (28.6 %)	2/7 (28.6 %)	0/2 (0 %)
	38	HOPITAL JEAN-TALON	3/6 (50 %)	2/7 (28.6 %)	1/6 (16.7 %)	1/9 (11.1 %)	2/7 (28.6 %)
	48	CENTRE HOSPITALIER DE ST. MARY	10/28 (35.7 %)	0/7 (0 %)	5/21 (23.8 %)	2/11 (18.2 %)	2/15 (13.3 %)
	76	HOPITAL DE LACHINE	0/1 (0 %)	1/1 (100 %)	4/5 (80 %)	1/4 (25 %)	0/4 (0 %)
	80	HOPITAL FLEURY	1/4 (25 %)	2/6 (33.3 %)	0/2 (0 %)	1/5 (20 %)	0/4 (0 %)
	83	HOPITAL DE LASALLE	2/5 (40 %)	0	0	0	0
	116	INSTITUT THORACIQUE DE MONTREAL	1/1 (100 %)	0	0	0	0
	118	HOPITAL FLEURY	0/1 (0 %)	0	0/3 (0 %)	0/2 (0 %)	0
		MONTREAL	97/389 (24.9 %)	56/274 (20.4 %)	57/308 (18.5 %)	46/285 (16.1 %)	43/324 (13.3 %)
	7	39	HOPITAL DE GATINEAU	0/3 (0 %)	0/3 (0 %)	2/5 (40 %)	1/8 (12.5 %)
40		HOPITAL DE HULL	0/5 (0 %)	1/10 (10 %)	1/16 (6.3 %)	0/13 (0 %)	2/6 (33.3 %)
51		HOPITAL DE MANIWAKI	0/1 (0 %)	0/1 (0 %)	1/2 (50 %)	0	0
95		HOPITAL DU PONTIAC	1/1 (100 %)	1/1 (100 %)	1/1 (100 %)	0	0
111		HOPITAL DE PAPINEAU	0	0/1 (0 %)	0/1 (0 %)	0	0/1 (0 %)
		OUTAOUAIS	1/10 (10.0 %)	2/16 (12.5 %)	5/25 (20.0 %)	1/21 (4.8 %)	2/12 (16.7 %)
47		HOPITAL DE ROUYN-NORANDA	0/1 (0 %)	3/6 (50 %)	1/3 (33.3 %)	0/1 (0 %)	0
8	52	HOPITAL D'AMOS	0	0	0	0/1 (0 %)	0
	65	HOPITAL ET CLSC DE VAL-D'OR	1/9 (11.1 %)	1/2 (50 %)	2/4 (50 %)	1/4 (25 %)	1/2 (50 %)
	70	CENTRE DE SOINS DE COURTE DUREE LA SARRE (CSCD)	0	0	0	0	0
	82	PAVILLON SAINTE-FAMILLE	2/3 (66.7 %)	0	0/1 (0 %)	0/1 (0 %)	0/1 (0 %)
		ABITIBI-TEMISCAMINGUE	3/13 (23.1 %)	4/8 (50.0 %)	3/8 (37.5 %)	1/7 (14.3 %)	1/3 (33.3 %)
9	64	HOPITAL LE ROYER	2/3 (66.7 %)	0/3 (0 %)	1/2 (50 %)	0/2 (0 %)	0/2 (0 %)
	72	HOPITAL ET CENTRE D'HEBERGEMENT DE SEPT-ILES	0/3 (0 %)	1/1 (100 %)	0/1 (0 %)	0/1 (0 %)	0
		CÔTE-NORD	2/6 (33.3 %)	1/4 (25.0 %)	1/3 (33.3 %)	0/3 (0 %)	0/2 (0 %)
10	96	CENTRE DE SANTE DE CHIBOUGAMAU	0/1 (0 %)	0	0	0	0
		NORD-DU-QUEBEC	0/1 (0 %)	0	0	0	0
	53	HOPITAL DE CHANDLER	0	0/4 (0 %)	0	0/1 (0 %)	0/1 (0 %)
11	91	HOPITAL HOTEL-DIEU DE GASPE	1/2 (50 %)	1/2 (50 %)	1/1 (100 %)	0/3 (0 %)	0
	97	HOPITAL DE MARIA	0	0/2 (0 %)	0/1 (0 %)	1/1 (100 %)	1/2 (50 %)
	107	HOPITAL DE L'ARCHIPEL	0/1 (0 %)	0	0	0	0/1 (0 %)
	109	HOPITAL DE SAINTE-ANNE-DES-MONTS	0	0/1 (0 %)	0	0	0/1 (0 %)
		GASPESIE-ÎLES-DE-LA-MADELEINE	1/3 (33.3 %)	1/9 (11.1 %)	1/2 (50.0 %)	1/5 (20.0 %)	1/5 (20.0 %)
18	HOTEL-DIEU DE LEVIS	3/21 (14.3 %)	2/16 (12.5 %)	0/6 (0 %)	1/8 (12.5 %)	0/8 (0 %)	

HR	Facility		Number of healthcare-associated MRSA bloodstream infections and proportion of resistance to methicillin by healthcare-associated <i>S. aureus</i> bloodstream infections (N [%])				
	Number	Name	2011-2012	2012-2013	2013-2014	2014-2015	2015-2016
63		HOPITAL DE SAINT-GEORGES	0/3 (0 %)	0/6 (0 %)	0	1/4 (25 %)	1/2 (50 %)
12	89	HOPITAL DE MONTMAGNY	1/3 (33.3 %)	1/2 (50 %)	0	1/2 (50 %)	0
	113	HOPITAL DE THETFORD MINES	3/11 (27.3 %)	1/5 (20 %)	0/4 (0 %)	0/2 (0 %)	0
		CHAUDIÈRE-APPALACHES	7/38 (18.4 %)	4/29 (13.8 %)	0/10 (0 %)	3/16 (18.8 %)	1/10 (10.0 %)
13	19	HOPITAL CITE DE LA SANTE	11/57 (19.3 %)	7/41 (17.1 %)	5/32 (15.6 %)	3/29 (10.3 %)	4/33 (12.1 %)
		LAVAL	11/57 (19.3 %)	7/41 (17.1 %)	5/32 (15.6 %)	3/29 (10.3 %)	4/33 (12.1 %)
14	11	HOPITAL PIERRE-LE GARDEUR	1/13 (7.7 %)	3/20 (15 %)	2/13 (15.4 %)	1/8 (12.5 %)	0/9 (0 %)
	14	CENTRE HOSPITALIER REGIONAL DE LANAUDIÈRE	5/19 (26.3 %)	3/17 (17.6 %)	2/19 (10.5 %)	1/18 (5.6 %)	1/18 (5.6 %)
		LANAUDIÈRE	6/32 (18.8 %)	6/37 (16.2 %)	4/32 (12.5 %)	2/26 (7.7 %)	1/27 (3.7 %)
	45	HOPITAL DE SAINT-EUSTACHE	1/6 (16.7 %)	0/8 (0 %)	3/12 (25 %)	1/6 (16.7 %)	1/12 (8.3 %)
	56	CSSS D'ARGENTEUIL	0	2/2 (100 %)	0/1 (0 %)	1/5 (20 %)	0
15	81	HOPITAL DE MONT-LAURIER	0/3 (0 %)	0/1 (0 %)	0/1 (0 %)	1/3 (33.3 %)	1/5 (20 %)
	101	HOPITAL REGIONAL DE SAINT-JEROME	3/35 (8.6 %)	3/17 (17.6 %)	5/23 (21.7 %)	2/30 (6.7 %)	2/18 (11.1 %)
	103	HOPITAL LAURENTIEN	0	0/2 (0 %)	0	0/2 (0 %)	0/5 (0 %)
		LAURENTIDES	4/44 (9.1 %)	5/30 (16.7 %)	8/37 (21.6 %)	5/46 (10.9 %)	4/40 (10.0 %)
	1	HOPITAL CHARLES LEMOYNE	0/22 (0 %)	5/29 (17.2 %)	2/30 (6.7 %)	3/17 (17.6 %)	2/20 (10 %)
	9	HOPITAL DU HAUT-RICHELIEU	4/22 (18.2 %)	2/11 (18.2 %)	2/11 (18.2 %)	0/17 (0 %)	0/13 (0 %)
	10	HOPITAL PIERRE-BOUCHER	0/7 (0 %)	2/7 (28.6 %)	2/12 (16.7 %)	2/10 (20 %)	1/4 (25 %)
16	35	HOPITAL HONORE-MERCIER	3/13 (23.1 %)	0/9 (0 %)	4/8 (50 %)	0/2 (0 %)	0/7 (0 %)
	37	HOTEL-DIEU DE SOREL	1/11 (9.1 %)	1/10 (10 %)	1/9 (11.1 %)	0/8 (0 %)	2/12 (16.7 %)
	42	CENTRE HOSPITALIER ANNA-LABERGE	2/10 (20 %)	3/11 (27.3 %)	4/8 (50 %)	3/7 (42.9 %)	1/6 (16.7 %)
	58	HOPITAL DU SUROIT	1/8 (12.5 %)	1/4 (25 %)	4/10 (40 %)	2/15 (13.3 %)	3/6 (50 %)
	130	HOPITAL BARRIE MEMORIAL	0	0/2 (0 %)	0	3/5 (60 %)	0/1 (0 %)
		MONTÉRÉGIE	11/93 (11.8 %)	14/83 (16.9 %)	19/88 (21.6 %)	13/81 (16.0 %)	9/69 (13.0 %)
		Total	173/866 (20.0 %)	118/704 (16.8 %)	124/701 (17.7 %)	87/685 (12.7 %)	81/671 (12.1 %)

HR: Heath region.

Note : When the number of HA-MRSA-BSI is equal to zero, no percentage is displayed.

- Facilities that did not participate in the surveillance or that participated less than 11 periods.

Author

Comité de surveillance provinciale des infections nosocomiales (SPIN)

Editorial Committee

Christophe Garenc, Direction des risques biologiques et de la santé au travail. Institut national de santé publique du Québec

Danielle Moisan, Centre hospitalier régional du Grand-Portage

Muleka Ngenda-Muadi, Direction des risques biologiques et de la santé au travail. Institut national de santé publique du Québec


Isabelle Rocher, Direction des risques biologiques et de la santé au travail. Institut national de santé publique du Québec

Claude Tremblay, Centre hospitalier universitaire de Québec – Université Laval

Mélissa Trudeau, Direction des risques biologiques et de la santé au travail. Institut national de santé

publique du Québec

Jasmin Villeneuve, Direction des risques biologiques et de la santé au travail. Institut national de santé publique du Québec

Québec 

© 2001-2020 Gouvernement du Québec

Source URL (modified on 08/16/2018 - 21:24):

<https://www.inspq.qc.ca/en/nosocomial-infections/spin-mrsa/surveillance-results-2016-2017>

Links

[1] <https://www.inspq.qc.ca/infections-nosocomiales/spin/sarm/surveillance-2016-2017>

[2] <https://www.inspq.qc.ca/sites/default/files/images/maladies-infectieuses/spin/sarm/2017/en/figure1.png>

[3] <https://www.inspq.qc.ca/sites/default/files/images/maladies-infectieuses/spin/sarm/2017/en/figure2.png>

[4] <https://www.inspq.qc.ca/sites/default/files/images/maladies-infectieuses/spin/sarm/2017/en/figure3.png>

[5] <https://www.inspq.qc.ca/sites/default/files/images/maladies-infectieuses/spin/sarm/2017/en/figure4.png>

[6] <https://www.inspq.qc.ca/sites/default/files/images/maladies-infectieuses/spin/sarm/2016/figure5.png>

[7] <https://www.inspq.qc.ca/sites/default/files/images/maladies-infectieuses/spin/sarm/2017/en/figure6.png>

[8] <https://www.inspq.qc.ca/sites/default/files/images/maladies-infectieuses/spin/sarm/2017/en/figure7.png>

[9] https://www.inspq.qc.ca/en/file/11012/download?token=7xCZ3_DZ