



Clostridium difficile-Associated Diarrhea (CDAD) Surveillance Results: 2014-2015

From April 1, 2014, to March 31, 2015, 95 healthcare facilities participated in the surveillance of *Clostridium difficile*-associated diarrhea (CDAD), for a combined total of 5,076,655 inpatient days (Table 1). The participating facilities reported 3,453 cases of healthcare-associated (HA) CDAD. The incidence rate of HA CDAD was 6.8 cases per 10,000 patient days. This incidence rate was significantly lower compared to the rate of 2013-2014. The 10-day fatality rate was 9.8% (n = 285) while the 30-day fatality rate was 18.6% (n = 543). In total, 36 (1.2%) colectomies were reported. Data was extracted on May 20th, 2015 and updated on June 1st 2015.

Updated : March 24, 2016

Table 1 - Participation of Healthcare Facilities in the Surveillance of CDAD, Québec, 2010-2011 to 2014-2015

	2010-2011	2011-2012	2012-2013	2013-2014	2014-2015
Participating facilities (N)	95	95	95	95	95
Admissions (N)	617,103	630,156	640,103	650,571	654,931
Inpatient days (N)	5,160,240	5,176,519	5,227,730	5,122,540	5,076,655
Healthcare-associated CDAD cases (cat. 1a+ 1b) (N)	3,635	3,778	3,794	3,663	3,453

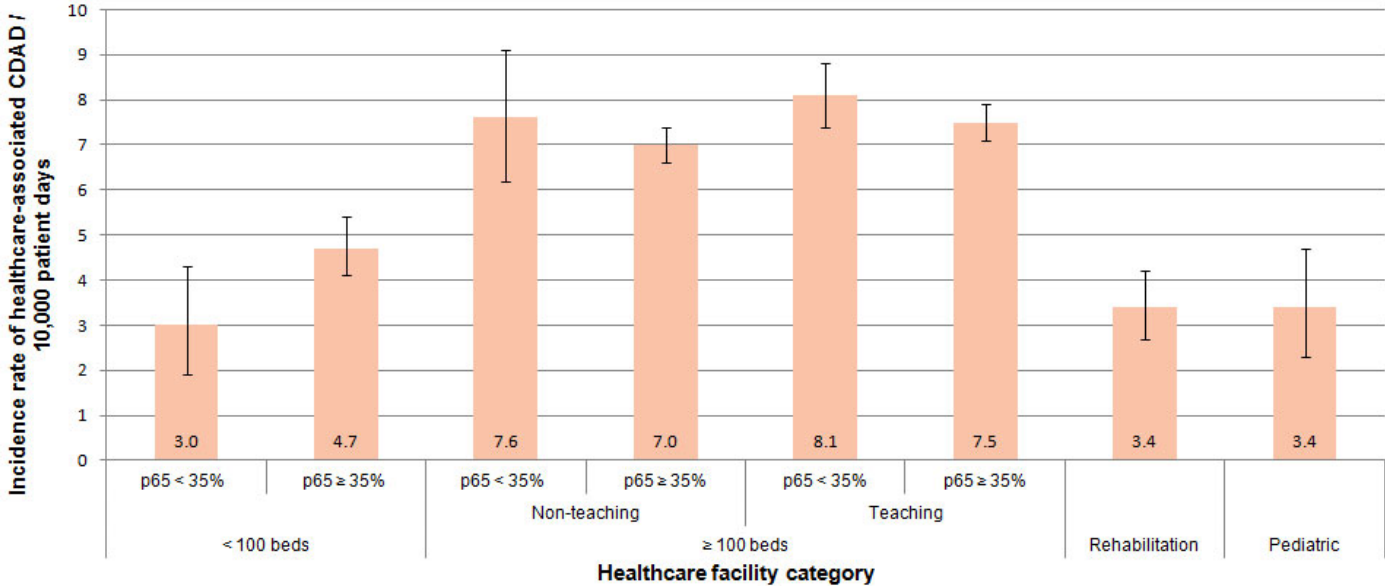
Open all

Incidence Rates

In 2014-2015, the provincial incidence rate for HA CDAD was 6.8 cases per 10,000 patient days (Table 2).

According to number of beds and teaching vocation, incidence rates for CDAD remained significantly higher in facilities with 100 beds or more, whatever the proportion of admitted patient aged 65 years or older and the teaching vocation (Figure 1 and Table 2).

Figure 1 - Healthcare-associated CDAD Incidence Rate, by Healthcare Facility Category, Québec, 2014-2015 (Incidence Rate per 10,000 Patient Days [95% CI])



p65 : Proportion of admitted patients aged 65 years or older
 95% CI: 95% confidence interval.

In 2014-2015, the types of healthcare facility (Table 2) that reported a CDAD incidence rate higher than that of the reference facilities (facilities < 100 beds and p65 < 35%) were:

- Facilities < 100 beds and p65 ≥ 35% (univariate rate ratio = 1.6);
- Non-teaching facilities ≥ 100 beds and p65 < 35% (univariate rate ratio = 2.5);
- Non-teaching facilities ≥ 100 beds and p65 ≥ 35% (univariate rate ratio = 2.3);
- Teaching facilities ≥ 100 beds and p65 < 35% (univariate rate ratio = 2.7);
- Teaching facilities ≥ 100 beds and p65 ≥ 35% (univariate rate ratio = 2.5).

Table 2 - Percentile, Incidence Rate and Univariate Rate Ratio of Healthcare-Associated CDAD by Healthcare Facility Category, Québec, 2014-2015 (Incidence Rate per 10,000 Patient Days [95% CI])

Healthcare Facility Category	Distribution Indicator						Incidence Rate [95% CI]	Univariate Rate Ratio [95% CI]
	Min.	25%	50%	75%	90%	Max.		
Facilities < 100 beds and p65 < 35% (N = 4)	0.4	1.0	2.6	4.5	5.3	5.3	3.0 [1.9-4.3]	(ref)
Facilities < 100 beds and p65 ≥ 35% (N = 29)	0	2.0	4.0	5.7	10.4	14.9	4.7 [4.1-5.4]	1.6 [1.0-2.4]*

Non-teaching \geq 100 beds and p65 < 35% (N = 4)	2.0	2.3	6.7	11.2	11.6	11.6	7.6 [6.2-9.1]	2.5 [1.6-3.9]*
Non-teaching \geq 100 beds and p65 \geq 35% (N = 28)	1.1	4.0	6.0	9.6	12.9	15.7	7.0 [6.6-7.4]	2.3 [1.6-3.5]*
Teaching \geq 100 beds and p65 < 35% (N = 6)	3.0	4.2	8.8	11.7	11.9	11.9	8.1 [7.4-8.8]	2.7 [1.8-4.0]*
Teaching \geq 100 beds and p65 \geq 35% (N = 16)	2.4	6.3	7.6	8.3	9.2	12.7	7.5 [7.1-7.9]	2.5 [1.6-3.7]*
Rehabilitation (N = 6)	0.0	1.9	3.5	4.7	6.1	6.1	3.4 [2.7-4.2]	1.1 [0.7-1.8]
Pediatric (N = 2)	2.7	2.7	3.9	5.0	5.0	5.0	3.4 [2.3-4.7]	1.1 [0.7-1.9]
Total (N = 95)	0.0	2.7	5.0	8.0	11.7	15.7	6.8 [6.6-7.0]	

There are two teaching facilities included in the healthcare facilities with the fewer than 100 beds category.

*Significant statistical difference ($p < 0.05$) between univariate rate ratio of the healthcare facility category and reference (ref).

p65 : Proportion of admitted patients aged 65 years or older.

The univariate analysis presented on Table 3 reveals that:

- Facilities with 100 to 249 beds have a higher annual incidence rate of CDAD than facilities with fewer than 100 beds (univariate rate ratio of 1.3);
- Facilities with 250 beds or more have a higher annual incidence rate of CDAD than facilities with fewer than 100 beds (univariate rate ratio of 1.8);
- Facilities with a proportion of admitted patients aged 65 years or older equal or greater to 35% have a similar incidence rate than facilities with a proportion of admitted patients aged 65 years or older lower than 35% (univariate rate ratio of 0.9);
- Teaching facilities have a higher incidence rate than non-teaching facilities (univariate rate ratio of 1.2);
- Rehabilitation facilities have a lower incidence rate than non-teaching facilities (univariate rate ratio of 0.5);
- Pediatric facilities have a lower incidence rate than non-teaching facilities (univariate rate ratio of 0.5).

Table 3 - Healthcare-associated CDAD Incidence Rate and Univariate Rate Ratio Stratified by Number of Beds, Proportion of Admitted Patients Aged 65 Years or Older and Type of Healthcare Facility, Québec, 2014-2015 (Incidence Rate per 10,000 Patient Days [95% CI])

Facility Characteristics	Incidence Rate [95% CI]	Univariate Rate Ratio [95% CI]
Number of Beds*		
< 100 beds (N = 33)	4.5 [3.9 ; 5.1]	(ref)
100-249 beds (N = 30)	6.0 [5.6 ; 6.3]	1.3 [1.2-1.5]***

≥ 250 beds (N = 26) 8,0 [7.7 ; 8.3] 1.8 [1.6-2.1]***

Proportion of Admitted Patients Aged 65 Years or Older**

p65 < 35% (N = 14) 7.5 [6.9-8.1] (ref)
 p65 ≥ 35% (N = 73) 7.0 [6.7-7.2] 0.9 [0.9-1.0]

Type of Healthcare Facility

Non-teaching (N = 63) 6.6 [6.2-6.9] (ref)
 Teaching (N = 24) 7.6 [7.2-7.9] 1.2 [1.1-1.2]***
 Rehabilitation (N = 6) 3.4 [2.7-4.2] 0.5 [0.4-0.7]***
 Pediatric (N = 2) 3.4 [2.3-4.6] 0.5 [0.4-0.7]***

* The six rehabilitation facilities are excluded from the analysis.

**The six rehabilitation facilities and two pediatric facilities are excluded from the analysis.

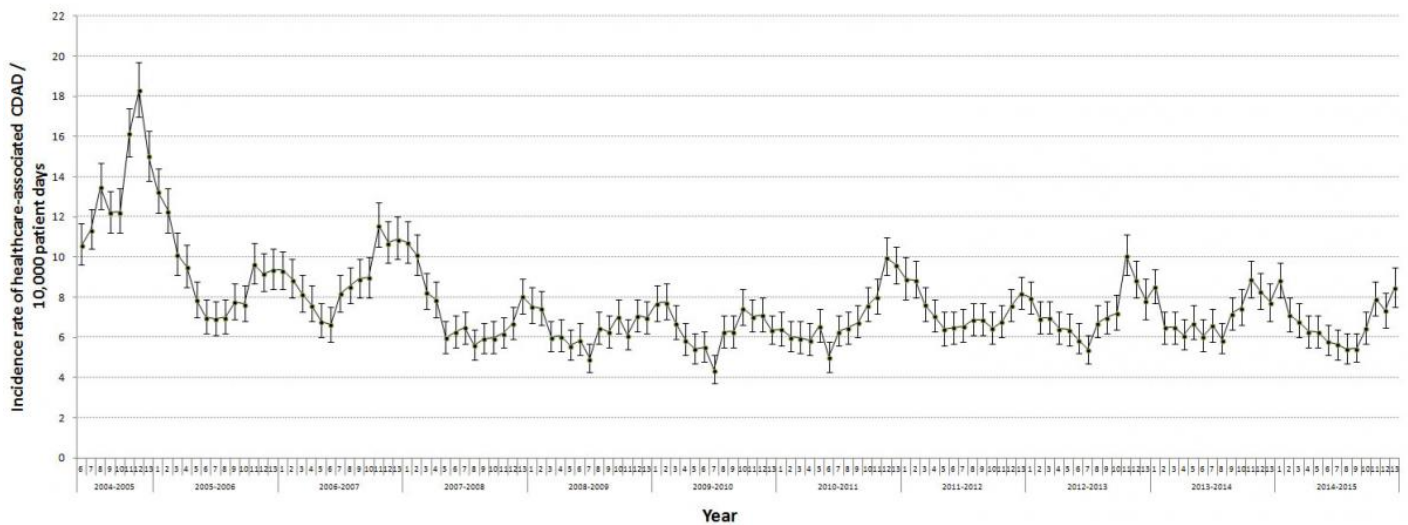
*** Significant statistical difference (p < 0.05) between univariate rate ratio of the healthcare facility category and reference (ref).

p65 : Proportion of admitted patients aged 65 years or older.

Incidence Rate Trends

HA CDAD incidence rates in 2014–2015 were lower compared to 2013–2014 (Table 4, Figures 2 and 3).

Figure 2 - Healthcare-associated CDAD Incidence Rate for Participating Healthcare Facilities, Québec, 2004–2005 to 2014–2015 (Incidence Rate per 10,000 Patient Days [95% CI]) (N = 95)¹

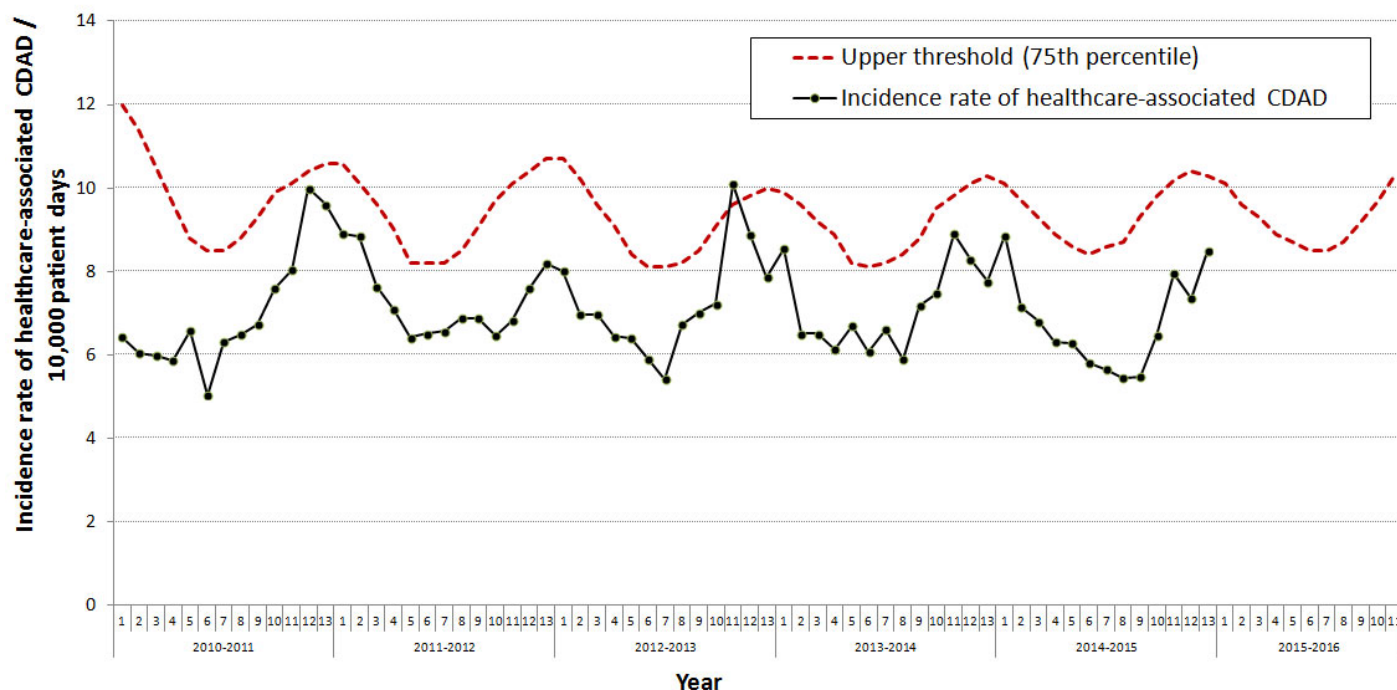


[1]

¹ Data are those from facilities that participated in surveillance in 2014-2015 as well as at least height

periods in 2004.2005 and at least 11 periods between 2005-2006 and 2013-2014.

Figure 3 - Healthcare-associated CDAD Incidence Rate and 75th percentile Threshold Value (for Participating Facilities, Québec, 2010-2011 to 2014-2015 (Incidence Rate per 10,000 Patient Days [95% CI]) (N = 95)



[2]

Compared to 2013-2014, non-teaching healthcare facilities with 100 or more beds and less than 35% of admitted patients aged 65 years or older ($p_{65} < 35\%$) demonstrated a significant increase in their CDAD incidence rate from 3.8 to 7.6 healthcare-associated CDAD / 10 000 patient days. In contrast, teaching facilities with 100 or more beds and 35% or more admitted patients aged 65 years or older ($p_{65} \geq 35\%$) demonstrated a significant drop for a second consecutive year in their CDAD incidence rate from 8.8 to 7.5 healthcare-associated CDAD / 10 000 patient days (Table 4).

Table 4 - Healthcare-associated CDAD Incidence Rate by Healthcare Facility Category (N = 95)¹, Québec, 2014-2015 (Incidence Rate per 10,000 Patient Days [95% CI])

Healthcare Facility Category	2010-2011	2011-2012	2012-2013	2013-2014	2014-2015
Facilities < 100 beds, $p_{65} < 35\%$ (N = 4)	3.1 [2.0-4.4]	5.3 [3.8-7.0]	3.5 [2.3-4.9]	2.9 [1.8-4.2]	3.0 [1.9-4.3]
Facilities < 100 beds, $p_{65} \geq 35\%$ (N = 29)	6.4 [5.7-7.2]	5.0 [4.4-5.7]	5.4 [4.7-6.1]	5.6 [4.9-6.3]	4.7 [4.1-5.4]
Non-teaching ≥ 100 beds, $p_{65} < 35\%$ (N = 4)	7.6 [6.2-9.1]	6.0 [4.8-7.4]	4.7 [3.6-5.9]	3.8 [2.9-4.9]	7.6 [6.2-9.1]*
Non-teaching ≥ 100 beds, $p_{65} \geq 35\%$ (N = 28)	6.4 [6.0-6.8]	6.6 [6.2-7.0]	6.0 [5.7-6.4]	7.1 [6.7-7.5]	7.0 [6.6-7.4]

Teaching \geq 100 beds, p65 $<$ 35% (N = 6)	7.4 [6.7-8.1]	8.0 [7.3-8.7]	8.6 [7.9-9.4]	7.8 [7.1-8.5]	8.1 [7.4-8.8]
Teaching \geq 100 beds, p65 \geq 35% (N = 16)	8.7 [8.3-9.1]	9.6 [9.1-10.1]	9.9 [9.4-10.4]	8.8 [8.4-9.3]	7.5 [7.1-7.9]*
Rehabilitation facilities (N = 6)	3.3 [2.7-4.0]	3.0 [2.4-3.7]	3.3 [2.7-4.0]	2.9 [2.3-3.6]	3.4 [2.7-4.2]
Pediatric facilities (N = 2)	3.2 [2.2-4.4]	2.5 [1.6-3.5]	3.9 [2.8-5.2]	3.2 [2.2-4.4]	3.4 [2.3-4.7]
Total	7.0 [6.8-7.2]	7.3 [7.1-7.5]	7.3 [7.1-7.5]	7.2 [7.0-7.4]	6.8 [6.6-7.0]*

* Significant statistical difference ($p < 0.05$) between healthcare-associated CDAD of 2013-2014 and 2014-2015.

p65: Proportion of admitted patients aged 65 years or older.

¹ Data are those from facilities that participated in surveillance in 2014-2015 as well as at least 11 periods between 2010-2011 and 2013-2014.

Description of Cases

In total, 5,004 cases of CDAD were reported of which 3,453 were healthcare-associated (current or previous hospitalisation) (cat. 1a, 1b), and 304 cases which were associated with ambulatory care in the reporting facility (cat. 1c) (Table 5).

Table 5 - Distribution of CDAD Cases by Presumed Origin of Acquisition, Québec, 2014-2015 (N, %)

Category	Origin of Acquisition	N	%
1a	Healthcare-associated with a current hospitalisation in the reporting facility	2,489	49.7
1b	Healthcare-associated with a previous hospitalisation in the reporting facility	964	19.3
1c	Healthcare-associated with ambulatory care in the reporting facility	304	6.1
1d	Healthcare-associated with long term unit in the reporting facility	12	0.2
2	Healthcare-associated with another facility	262	5.2
3	Community	737	14.7
4	Unknown	236	4.7
	Total	5,004	100

Data related to complications were available in 2,922 of the 3,453 cases of HA CDAD (84.6%). The 10-day case fatality rate ($n = 285$) was 9.8% whereas the 11- to 30-day case fatality rate ($n = 258$) was 8.8%. In addition to the 543 deaths that occurred within 30 days (18.6%), 36 colectomies (1.2%), 202 readmissions (6.9%) and 98 transfers to an intensive care unit (ICU) (3.4%) were reported (Table 6). As of 2010-2011, the percentage of deaths within 30 days has remained stable, ranging from 15.1% to 18.6%.

Table 6 - Number of Deaths, Case Fatality Rate and Complications Related to Healthcare-

associated CDAD, Québec, 2010-2011 to 2014-2015 [N (%)]

	2010-2011	2011-2012	2012-2013	2013-2014	2014-2015
Number and percentage of CDAD cases with documented complications	3,343 (92)	3,550 (94)	3,483 (91.8)	3,525 (96.2)	2,922 (84.6)
Number of facilities reporting complications	89	91	88	89	82
Deaths					
Death within 10 days	318 (9.5)	305 (8.6)	304 (8.7)	322 (9.1)	285 (9.8)
Death within 30 days*	580 (17.3)	545 (15.4)	561 (16.1)	534 (15.1)	543 (18.6)
Other complications					
Colectomy	59 (1.8)	53 (1.5)	33 (0.9)	46 (1.3)	36 (1.2)
Readmission	170 (5.1)	155 (4.4)	182 (5.2)	223 (6.3)	202 (6.9)
Admission to ICU	94 (2.8)	98 (2.8)	97 (2.8)	110 (3.1)	98 (3.4)

*The number of deaths within 30 days includes the number of deaths within 10 days

Microbiology

A laboratory surveillance of *C. difficile* strains is performed by the Laboratoire de santé publique du Québec every year. This surveillance took place in 2014-2015 and results will be incorporated into this report shortly.

Data per Healthcare Facility

The HA CDAD incidence rates by healthcare facility and healthcare facility category are shown in Figures 4 through 11.

Figure 4 - Healthcare-associated CDAD Incidence Rate, Among Facilities with Fewer than 100 Beds and a Proportion of Admitted Patients Aged 65 Years or Older Below 35% , Québec, 2014-2015 (Incidence Rate per 10,000 Patient Days [95% CI])

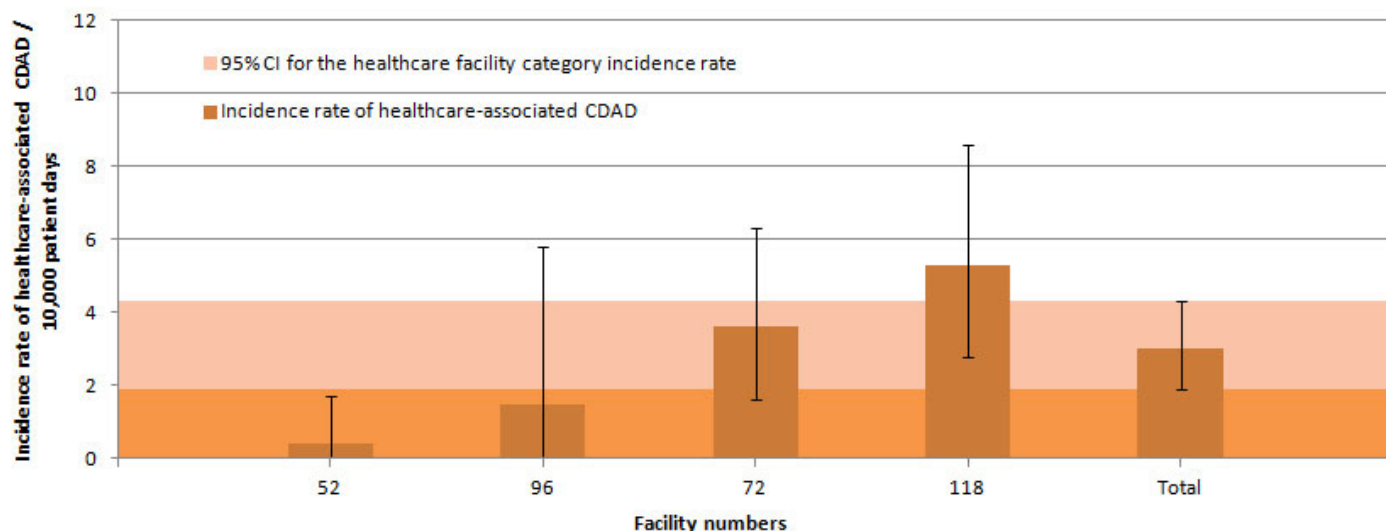


Figure 5 - Healthcare-associated CDAD Incidence Rate Among Facilities with Fewer than 100 Beds and a Proportion of Admitted Patients Aged 65 Years or Older of 35% or More, Québec, 2014-2015 (Incidence Rate per 10,000 Patient Days [95% CI])

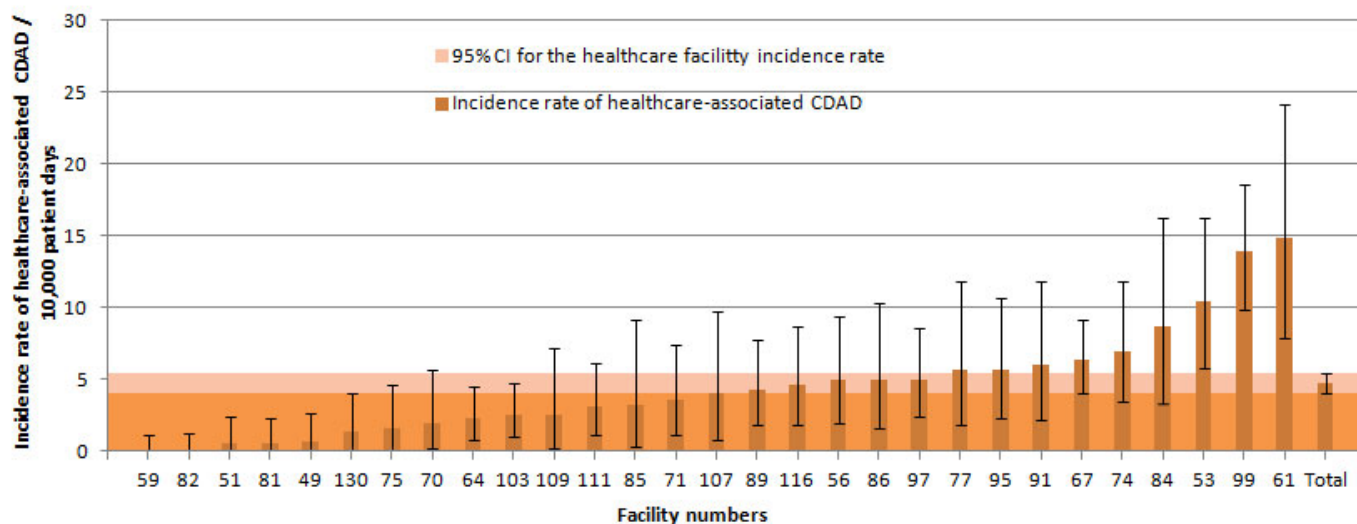


Figure 6 - Healthcare-associated CDAD Incidence Rate Among Non-Teaching Facilities with 100 Beds or More and a Proportion of Admitted Patients Aged 65 Years or Older Below 35%, Québec, 2014-2015 (Incidence Rate per 10,000 Patient Days [95% CI])

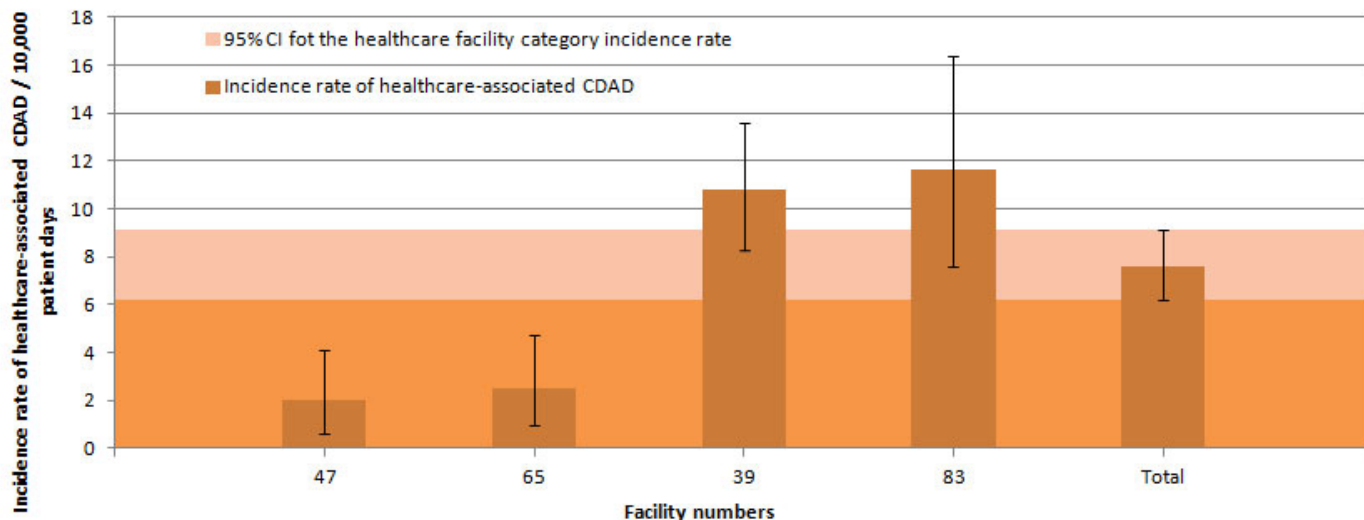


Figure 7 - Healthcare-associated CDAD Incidence Rate Among Non-Teaching Facilities with 100 Beds or More and a Proportion of Admitted Patients Aged 65 Years or Older of 35% or More, Québec, 2014-2015 (Incidence Rate per 10,000 Patient Days [95% CI])

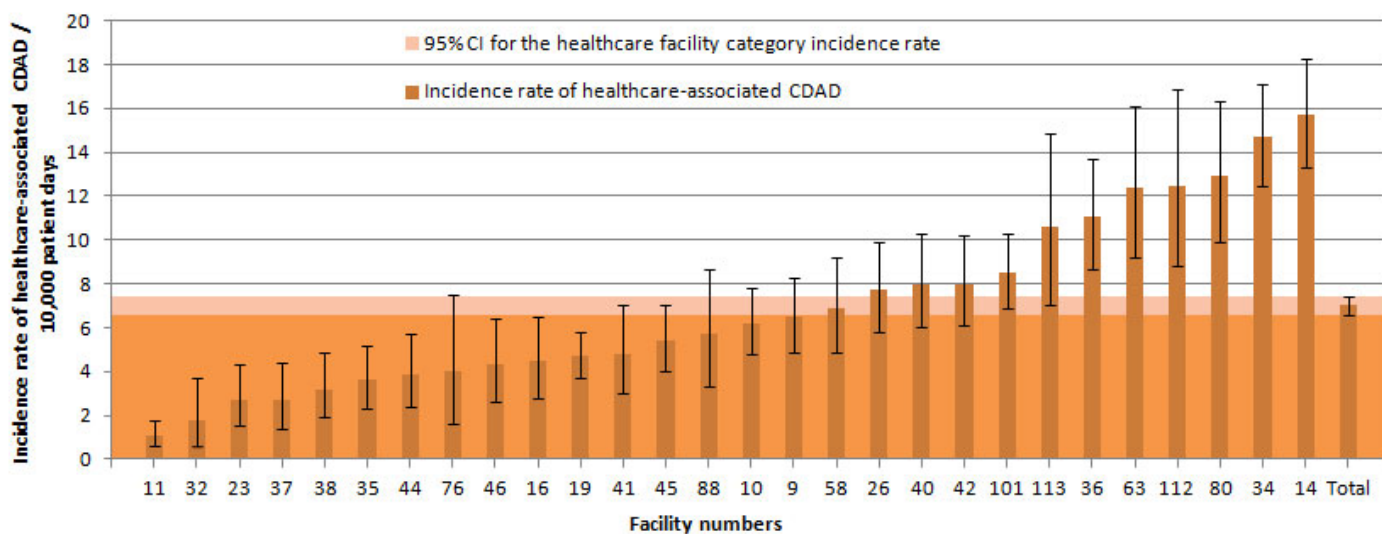


Figure 8 - Healthcare-associated CDAD Incidence Rate Among Teaching Facilities with 100 Beds or More and a Proportion of Admitted Patients Aged 65 Years or Older Below 35%, Québec, 2014-2015 (Incidence Rate per 10,000 Patient Days [95% CI])

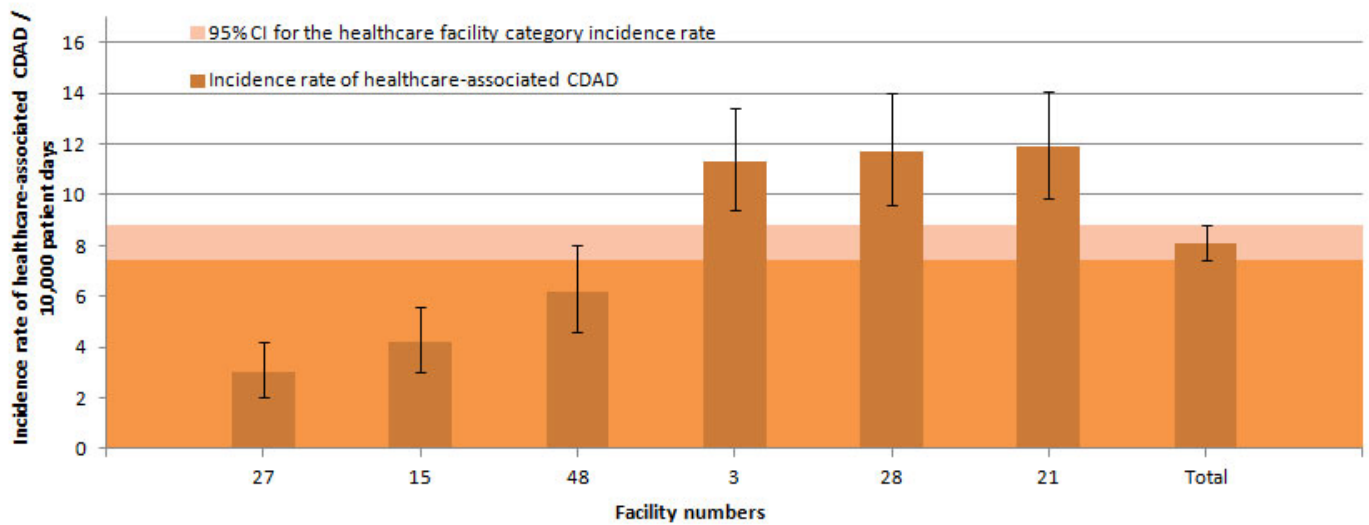


Figure 9 - Healthcare-associated CDAD Incidence Rate Among Teaching Facilities with 100 Beds or More and a Proportion of Admitted Patients Aged 65 Years or Older of 35% or More, Québec, 2014-2015 (Incidence Rate per 10,000 Patient Days [95% CI])

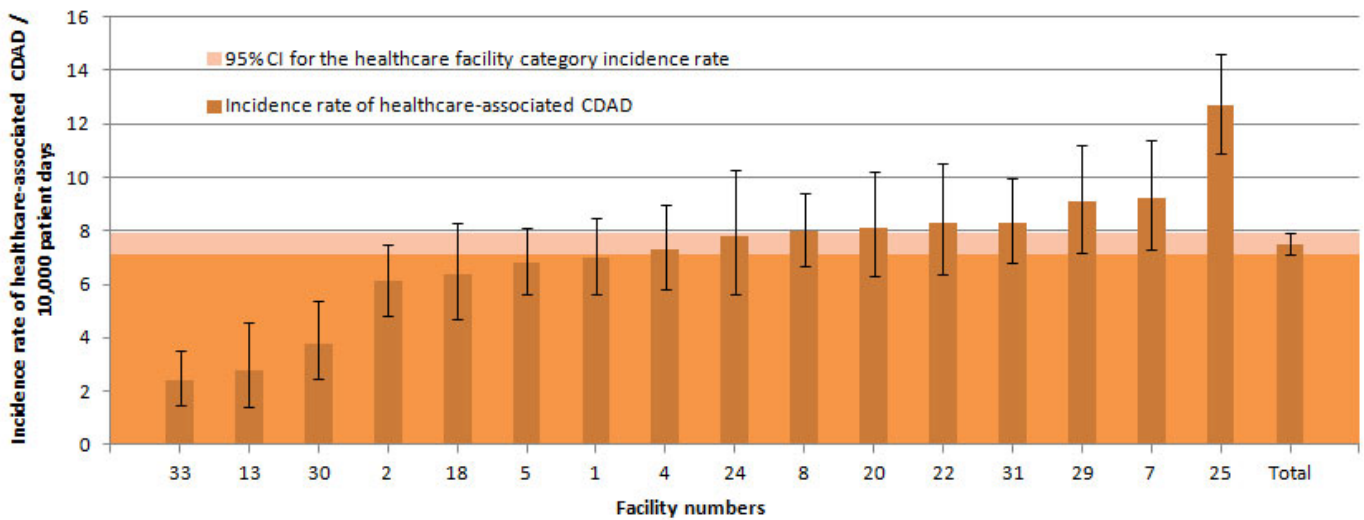


Figure 10 - Healthcare-associated CDAD Incidence Rate Among Rehabilitation Facilities, Québec, 2014-2015 (Incidence Rate per 10,000 Patient Days [95% CI])

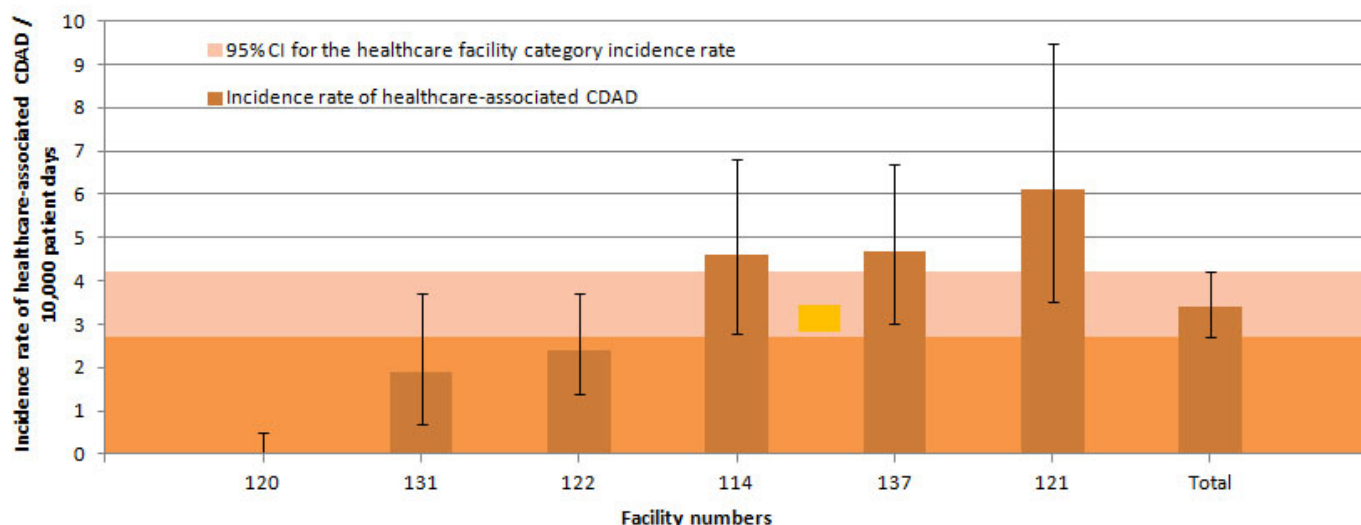
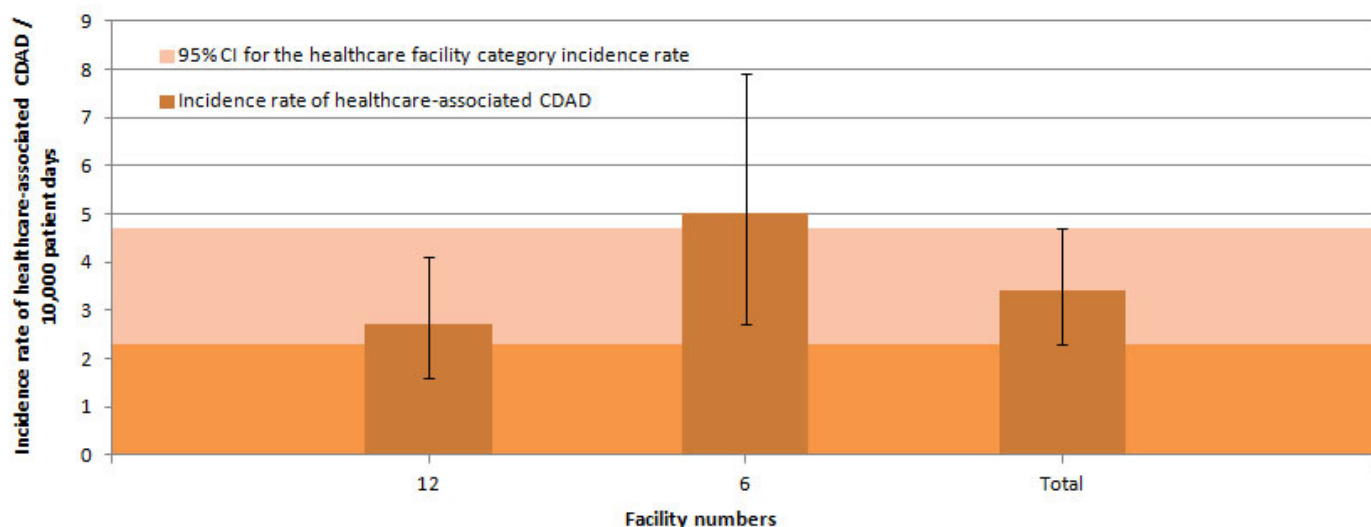


Figure 11 - Healthcare-associated CDAD Incidence Rate Among Pediatric Facilities, Québec, 2014-2015 (Incidence Rate per 10,000 Patient Days [95% CI])



At the local level, the HA CDAD incidence rate ranged from 0 to 15.7/10,000 patient days in 2014-2015. The incidence rates for the past five years of surveillance are indicated in Table 7. Overall, 17 healthcare facilities (17.9%) saw a significant decrease in their HA CDAD incidence rate compared to 2013-2014, whereas 8 facilities (8.4%) experienced a significant increase. Two regions (Capitale-Nationale and Chaudière-Appalaches) as well as the province have a significant decrease in their HA CDAD as compared to 2013-2014.

Table 7 - Healthcare-associated CDAD Incidence Rate per Healthcare Facility, Québec, 2010-2011 to 2014-2015 (Incidence Rate per 10,000 Patient Days [95% CI])

HR	Facility		Incidence rate of healthcare-associated CDAD / 10,000 patient days [95% CI]				
	Number	Name	2010-2011	2011-2012	2012-2013	2013-2014	2014-2015
01	16	HÔPITAL RÉGIONAL DE RIMOUSKI	9.8 [7.4-12.6]	16.0 [12.8-19.6]	7.0 [5.0-9.4]	5.1 [3.3-7.2]	4.5 [2.8-6.5]

32	CENTRE HOSPITALIER RÉGIONAL DU GRAND-PORTAGE	4.6 [2.6-7.2]	3.1 [1.5-5.3]	2.6 [1.1-4.7]	2.7 [1.2-4.9]	1.8 [0.6-3.7]	
61	CENTRE NOTRE-DAME-DE-FATIMA	9.7 [4.4-17.1]	8.2 [3.5-14.9]	9.8 [4.4-17.2]	7.8 [2.8-15.3]	14.9 [7.9-24.1]	
71	HÔPITAL DE MATANE	3.0 [0.8-6.7]	3.7 [1.2-7.7]	1.6 [0.1-4.6]	3.1 [0.8-6.9]	3.6 [1.1-7.4]	
77	HÔPITAL D'AMQUI	16.8 [9.6-26]	17.8 [10.2-27.6]	9.7 [4.2-17.6]	6.2 [2.0-12.8]	5.7 [1.8-11.8]	
84	HÔPITAL DE NOTRE-DAME-DU-LAC	0	7.1 [2.6-13.9]	0	2.4 [0.2-6.9]	8.7 [3.4-16.3]	
	BAS-SAINT-LAURENT	7.6 [6.2-9.2]	10.3 [8.6-12.2]	5.3 [4.1-6.7]	4.3 [3.2-5.6]	4.9 [3.7-6.2]	
02	20	HÔPITAL DE CHICOUTIMI	3.2 [2.1-4.5]	3.5 [2.4-4.8]	6.4 [4.8-8.2]	8.0 [6.3-9.9]	8.1 [6.3-10.2]
	67	HÔPITAL ET CENTRE DE RÉADAPTATION DE JONQUIÈRE	3.9 [2.2-6.1]	3.6 [2.0-5.7]	3.0 [1.5-4.9]	10.1 [7.2-13.5]	6.4 [4.1-9.2]
	74	HÔPITAL DE DOLBEAU-MISTASSINI	3.6 [1.4-6.8]	2.9 [1.0-5.7]	4.7 [2.0-8.5]	3.2 [1.0-6.6]	7.0 [3.5-11.8]
	88	HÔPITAL. CLSC ET CENTRE D'HÉBERGEMENT DE ROBERVAL	2.3 [0.9-4.3]	1.2 [0.3-2.6]	3.0 [1.4-5.1]	2.0 [0.7-3.9]	5.7 [3.3-8.7]*
	112	HÔPITAL D'ALMA	14.6 [10.7-19.1]	8.8 [5.8-12.4]	3.2 [1.5-5.5]	8.1 [5.3-11.5]	12.5 [8.8-16.9]
		SAGUENAY-LAC-SAINT-JEAN	5.0 [4.1-6.0]	3.8 [3.0-4.7]	4.6 [3.7-5.6]	7.2 [6.1-8.4]	8.0 [6.8-9.3]
03	2	HÔPITAL DE L'ENFANT-JÉSUS	3.5 [2.6-4.6]	6.9 [5.6-8.4]	6.8 [5.5-8.3]	5.0 [3.9-6.3]	6.1 [4.8-7.5]
	7	PAVILLON L'HÔTEL-DIEU DE QUÉBEC	13.4 [11.1-15.9]	9.9 [7.9-12.1]	7.7 [5.9-9.7]	13.7 [11.3-16.3]	9.2 [7.3-11.4]*
	24	HÔPITAL DU SAINT-SACREMENT	4.7 [3.0-6.8]	5.3 [3.6-7.4]	7.9 [5.8-10.4]	5.7 [3.9-7.9]	7.8 [5.6-10.3]
	27	PAVILLON CENTRE HOSPITALIER DE L'UNIVERSITÉ LAVAL	7.1 [5.6-8.8]	5.0 [3.7-6.5]	3.2 [2.2-4.4]	4.3 [3.1-5.7]	3.0 [2.0-4.2]
	28	PAVILLON SAINT-FRANÇOIS D'ASSISE	12.8 [10.6-15.2]	11.3 [9.2-13.6]	16.1 [13.6-18.8]	14.3 [11.9-16.9]	11.7 [9.6-14.0]
	33	INSTITUT UNIVERSITAIRE DE CARDIOLOGIE ET DE PNEUMOLOGIE DE QUÉBEC	6.2 [4.7-7.9]	8.7 [6.9-10.7]	6.1 [4.7-7.7]	5.2 [3.9-6.7]	2.4 [1.5-3.5]*
	59	HÔPITAL DE BAIE-SAINT-PAUL	1.1 [0-4.3]	5.5 [1.4-12.2]	1.4 [0-5.5]	1.2 [0-4.7]	0
	86	HÔPITAL DE LA MALBAIE	21.5 [14.2-30.4]	14.4 [8.2-22.3]	4.3 [1.1-9.5]	8.0 [3.2-15.0]	5.0 [1.6-10.3]
		CAPITALE-NATIONALE	7.9 [7.2-8.6]	7.9 [7.2-8.6]	7.6 [6.9-8.3]	7.7 [7.0-8.4]	6.3 [5.7-7.0]*
04	23	HÔTEL-DIEU D'ARTHABASKA	4.1 [2.6-6.0]	6.9 [4.9-9.3]	6.4 [4.5-8.7]	3.4 [2.0-5.2]	2.7 [1.5-4.3]
	31	PAVILLON SAINT-JOSEPH	10.6 [8.8-12.5]	11.9 [10.0-13.9]	14.9 [12.9-17.1]	8.8 [7.2-10.5]	8.3 [6.8-10.0]
	41	HÔPITAL DU CENTRE-DE-LA-MAURICIE	5.4 [3.5-7.7]	4.0 [2.4-6.0]	3.0 [1.6-4.8]	4.1 [2.5-6.1]	4.8 [3.0-7.0]
	44	HÔPITAL SAINTE-CROIX	11.3 [8.8-14.2]	10.6 [8.1-13.4]	4.4 [2.9-6.3]	4.3 [2.8-6.1]	3.9 [2.4-5.7]

85		CENTRE DE SANTÉ ET DE SERVICES SOCIAUX DU HAUT-SAINT-AURICE	6.4 [2.0-13.2]	4.0 [0.8-9.8]	8.5 [3.1-16.7]	4.3 [0.8-10.5]	3.2 [0.3-9.2]
		MAURICIE ET CENTRE-DU-QUÉBEC	8.6 [7.6-9.7]	9.2 [8.1-10.3]	9.2 [8.1-10.3]	6.1 [5.2-7.0]	5.7 [4.9-6.6]
05	15	HÔPITAL FLEURIMONT	3.1 [2.2-4.2]	2.4 [1.6-3.4]	2.5 [1.7-3.5]	3.3 [2.3-4.5]	4.2 [3.0-5.6]
	30	HÔTEL-DIEU DE SHERBROOKE	4.2 [2.8-5.9]	3.7 [2.4-5.3]	3.0 [1.8-4.4]	4.5 [3.0-6.3]	3.8 [2.5-5.4]
	49	CENTRE DE SANTÉ ET DE SERVICES SOCIAUX MEMPHRÉMAGOG	4.3 [1.3-8.9]	4.4 [1.4-9.1]	6.1 [2.4-11.5]	2.8 [0.7-6.3]	0.7 [0-2.7]
	75	CENTRE DE SANTÉ ET DE SERVICES SOCIAUX DU GRANIT	4.7 [1.2-10.4]	0	3.1 [0.8-6.9]	1.0 [0-4.0]	1.6 [0.1-4.6]
		ESTRIE	3.6 [2.8-4.5]	2.9 [2.2-3.7]	2.9 [2.2-3.7]	3.6 [2.8-4.5]	3.7 [2.9-4.6]
06	3	HÔPITAL ROYAL VICTORIA	10.4 [8.6-12.4]	14.6 [12.5-16.9]	13.9 [11.8-16.2]	10.9 [9.0-13.0]	11.3 [9.4-13.4]
	4	HÔPITAL NOTRE-DAME DU CHUM	5.7 [4.4-7.2]	6.4 [5.0-7.9]	6.7 [5.3-8.3]	9.8 [8.1-11.7]	7.3 [5.8-9.0]*
	5	HÔPITAL GÉNÉRAL JUIF	12.4 [10.8-14.1]	15.7 [13.9-17.6]	16.4 [14.5-18.4]	8.3 [7.0-9.8]	6.8 [5.6-8.1]
	6	HÔPITAL DE MONTRÉAL POUR ENFANTS	5.1 [2.9-8.0]	3.3 [1.6-5.6]	3.2 [1.4-5.6]	5.9 [3.4-9.2]	5.0 [2.7-7.9]
	8	PAV. MAISONNEUVE / PAV. MARCEL-LAMOUREUX	12.2 [10.6-13.9]	11.3 [9.8-12.9]	10.7 [9.2-12.3]	10.8 [9.3-12.4]	8.0 [6.7-9.4]*
	12	CENTRE HOSPITALIER UNIVERSITAIRE SAINTE-JUSTINE	2.5 [1.5-3.8]	2.1 [1.2-3.3]	4.2 [2.8-5.8]	2.2 [1.2-3.4]	2.7 [1.6-4.1]
	13	INSTITUT DE CARDIOLOGIE DE MONTRÉAL	6.5 [4.3-9.2]	7.2 [4.9-10.0]	7.2 [4.9-10.0]	6.3 [4.1-8.9]	2.8 [1.4-4.6]*
	21	HÔPITAL SAINT-LUC DU CHUM	6.5 [5.0-8.2]	9.8 [7.9-11.9]	8.5 [6.8-10.4]	9.2 [7.4-11.2]	11.9 [9.9-14.1]
	22	HÔTEL-DIEU DU CHUM	9.5 [7.4-11.8]	15.4 [12.8-18.3]	11.2 [9.0-13.6]	14.0 [11.5-16.7]	8.3 [6.4-10.5]*
	25	HÔPITAL DU SACRÉ-CŒUR DE MONTRÉAL	7.2 [5.9-8.6]	8.7 [7.3-10.2]	9.0 [7.6-10.6]	7.7 [6.4-9.2]	12.7 [10.9-14.6]*
	26	HÔPITAL DE VERDUN	9.0 [7.0-11.3]	8.1 [6.2-10.2]	8.9 [6.9-11.2]	6.6 [4.9-8.6]	7.7 [5.8-9.9]
	29	HÔPITAL GÉNÉRAL DE MONTRÉAL	14.4 [12.3-16.7]	14.8 [12.6-17.2]	12.5 [10.4-14.7]	11.9 [9.7-14.3]	9.1 [7.2-11.2]
	34	HÔPITAL SANTA CABRINI	5.1 [3.8-6.6]	9.1 [7.3-11.0]	7.7 [6.1-9.5]	9.5 [7.7-11.4]	14.7 [12.5-17.1]*
	36	HÔPITAL GÉNÉRAL DU LAKESHORE	10.1 [7.8-12.7]	5.8 [4.1-7.8]	8.4 [6.4-10.7]	10.2 [7.9-12.7]	11.1 [8.7-13.7]
	38	HÔPITAL JEAN-TALON	8.8 [6.5-11.4]	7.5 [5.4-9.9]	5.3 [3.5-7.4]	7.9 [5.7-10.5]	3.2 [1.9-4.9]*
	48	CENTRE HOSPITALIER DE ST. MARY	4.8 [3.4-6.4]	4.4 [3.1-6.0]	8.2 [6.3-10.3]	4.7 [3.3-6.3]	6.2 [4.6-8.0]
	76	HÔPITAL DE LACHINE	4.9 [2.4-8.2]	8.4 [5.0-12.7]	8.8 [5.3-13.2]	9.8 [5.9-14.7]	4.0 [1.6-7.5]*
	80	HÔPITAL FLEURY	4.7 [2.8-7.1]	7.4 [5.1-10.2]	5.5 [3.5-7.9]	13.3 [10.1-16.9]	12.9 [9.9-16.3]

	83	HÔPITAL DE LASALLE	7.6 [4.6-11.3]	12.0 [8.0-16.8]	7.9 [4.7-11.9]	9.4 [5.9-13.7]	11.6 [7.6-16.4]
	114	VILLA MÉDICA	4.8 [3.0-7.0]	3.1 [1.7-4.9]	5.8 [3.7-8.3]	3.5 [2.0-5.4]	4.6 [2.8-6.8]
	116	INSTITUT THORACIQUE DE MONTRÉAL	5.7 [3.0-9.2]	4.9 [2.4-8.2]	8.5 [5.1-12.8]	8.9 [5.3-13.5]	4.6 [1.8-8.7]
	118	HÔPITAL NEUROLOGIQUE DE MONTRÉAL	1.2 [0.2-3.0]	4.0 [1.9-6.9]	4.7 [2.4-7.7]	3.6 [1.6-6.3]	5.3 [2.8-8.6]
	120	HÔPITAL RICHARDSON	0	0	0	0	0
	121	HÔPITAL CATHERINE BOOTH DE L'ARMÉE DU SALUT	12.0 [8.4-16.2]	7.4 [4.6-10.8]	5.9 [3.5-9.0]	1.7 [0.5-3.5]	6.1 [3.5-9.5]*
	122	HÔPITAL MARIE-CLARAC	2.4 [1.4-3.7]	2.9 [1.8-4.3]	3.4 [2.1-4.9]	2.6 [1.5-4.0]	2.4 [1.4-3.7]
	137	INSTITUT DE RÉADAPTATION DE MONTRÉAL	1.3 [0.6-2.3]	2.4 [1.3-3.8]	3.8 [2.4-5.6]	4.6 [3.0-6.6]	4.7 [3.0-6.7]
		MONTRÉAL	7.9 [7.5-8.3]	9.0 [8.6-9.4]	8.9 [8.5-9.3]	8.2 [7.8-8.6]	8.2 [7.8-8.6]
07	39	HÔPITAL DE GATINEAU	6.2 [4.4-8.4]	4.8 [3.2-6.7]	5.6 [3.9-7.6]	3.2 [2.0-4.7]	10.8 [8.3-13.6]*
	40	HÔPITAL DE HULL	3.8 [2.5-5.4]	2.1 [1.2-3.3]	11.1 [8.8-13.7]	10.2 [7.9-12.8]	8.0 [6.0-10.3]
	51	HÔPITAL DE MANIWAKI	17.6 [11.3-25.4]	4.1 [1.5-8.0]	7.4 [3.7-12.4]	5.3 [2.3-9.6]	0.6 [0-2.4]*
	95	CENTRE HOSPITALIER DU PONTIAC	2.1 [0.4-5.1]	1.5 [0.2-4.2]	10.1 [5.5-16.1]	5.2 [2.1-9.8]	5.7 [2.3-10.7]
	111	HÔPITAL DE PAPINEAU	4.5 [2.0-7.9]	3.1 [1.1-6.1]	1.0 [0.1-2.9]	2.5 [0.8-5.1]	3.1 [1.1-6.1]
		OUTAOUAIS	5.6 [4.6-6.7]	3.2 [2.4-4.1]	7.7 [6.5-9.0]	5.9 [4.8-7.1]	7.6 [6.4-9.0]
08	47	HÔPITAL DE ROUYN-NORANDA	6.4 [3.5-10.2]	3.4 [1.5-6.1]	2.0 [0.6-4.1]	3.9 [1.8-6.8]	2.0 [0.6-4.1]
	52	CENTRE HOSPITALIER HÔTEL-DIEU D'AMOS	3.1 [1.3-5.6]	8.8 [5.5-12.9]	2.9 [1.1-5.5]	3.3 [1.3-6.2]	0.4 [0-1.7]*
	65	HÔPITAL ET CLSC DE VAL-D'OR	11 [7.6-15.1]	5.3 [3.0-8.3]	2.5 [1.0-4.7]	0.7 [0.1-2.0]	2.5 [1.0-4.7]
	70	CENTRE DE SOINS DE COURTE DURÉE LA SARRE	1.0 [0-3.9]	4.7 [1.5-9.7]	1.9 [0.2-5.5]	6.1 [2.4-11.4]	2.0 [0.2-5.7]
	82	PAVILLON SAINTE-FAMILLE	3.2 [0.6-7.9]	0	1.3 [0-5.2]	2.8 [0.3-8.0]	0*
		ABITIBI-TÉMISCAMINGUE	6.1 [4.6-7.8]	5.2 [3.9-6.7]	2.3 [1.4-3.4]	2.9 [1.9-4.1]	1.6 [0.9-2.5]
09	64	HÔPITAL LE ROYER	2.3 [0.9-4.3]	2.8 [1.2-5.1]	4.0 [2.0-6.7]	3.5 [1.6-6.1]	2.3 [0.8-4.5]
	72	HÔPITAL ET CENTRE D'HÉBERGEMENT DE SEPT-ÎLES	5.3 [2.7-8.7]	4.6 [2.2-7.9]	3.7 [1.6-6.7]	1.6 [0.4-3.6]	3.6 [1.6-6.3]
		CÔTE-NORD	3.6 [2.2-5.4]	3.5 [2.1-5.3]	3.8 [2.3-5.7]	2.6 [1.4-4.2]	2.9 [1.6-4.6]
10	96	CENTRE DE SANTÉ DE CHIBOUGAMAU	2.6 [0.2-7.5]	0	0	3.1 [0.3-8.9]	1.5 [0-5.8]
		NORD-DU-QUÉBEC	2.6 [0.2-7.5]	0	0	3.1 [0.3-8.9]	1.5 [0-5.8]
11	53	HÔPITAL DE CHANDLER	2.5 [0.7-5.5]	2.7 [0.7-6.0]	0.7 [0-2.8]	3.6 [1.1-7.4]	10.4 [5.8-16.3]*

91	HÔPITAL HÔTEL-DIEU DE GASPÉ	11.3 [6.2-18.0]	4.1 [1.3-8.5]	7.7 [3.3-14.0]	3.8 [1.0-8.5]	6.0 [2.2-11.8]
97	HÔPITAL DE MARIA	2.5 [0.8-5.2]	1.5 [0.3-3.7]	7.6 [4.3-11.8]	10.0 [5.9-15.2]	5.0 [2.4-8.6]
107	HÔPITAL DE L'ARCHIPEL	5.7 [1.8-11.8]	3.8 [0.7-9.3]	1.5 [0-5.8]	4.3 [0.8-10.5]	4.0 [0.8-9.8]
109	HÔPITAL DE SAINTE-ANNE-DES-MONTS	6.7 [2.4-13.1]	2.4 [0.2-6.9]	2.8 [0.3-8.0]	1.2 [0-4.8]	2.5 [0.2-7.2]
	GASPÉSIE-ÎLES-DE-LA-MADELEINE	5.1 [3.5-7.0]	2.7 [1.6-4.1]	4.7 [3.1-6.6]	5.4 [3.7-7.5]	6.0 [4.2-8.1]
12 18	HÔTEL-DIEU DE LÉVIS	12.7 [10.3-15.3]	8.7 [6.8-10.9]	13.1 [10.7-15.7]	10.9 [8.7-13.3]	6.4 [4.7-8.3]*
63	HÔPITAL DE SAINT-GEORGES	5.7 [3.7-8.1]	8.5 [6.1-11.3]	5.4 [3.4-7.8]	12.3 [9.1-16.0]	12.4 [9.2-16.1]
89	HÔPITAL DE MONTMAGNY	16.2 [11.3-21.9]	7.4 [4.3-11.3]	9.9 [6.1-14.6]	11.4 [7.1-16.8]	4.3 [1.8-7.8]*
113	HÔPITAL DE THETFORD MINES	4.9 [2.6-7.9]	4.9 [2.6-7.9]	5.1 [2.8-8.1]	8.0 [4.9-11.9]	10.6 [7.0-14.9]
	CHAUDIÈRE-APPALACHES	10.1 [8.6-11.7]	7.9 [6.6-9.3]	9.5 [8.1-11.0]	10.9 [9.3-12.6]	8.3 [7.0-9.8]*
13 19	HÔPITAL CITÉ DE LA SANTÉ	5.3 [4.2-6.5]	6.8 [5.6-8.1]	5.7 [4.6-6.9]	4.1 [3.2-5.1]	4.7 [3.7-5.8]
131	HÔPITAL JUIF DE RÉADAPTATION	2.0 [0.9-3.5]	2.5 [1.2-4.2]	1.5 [0.8-2.5]	2.9 [1.4-4.9]	1.9 [0.7-3.7]
	LAVAL	4.6 [3.7-5.6]	5.9 [4.9-7.0]	4.4 [3.6-5.3]	3.8 [3.0-4.7]	4.3 [3.5-5.2]
14 11	HÔPITAL PIERRE-LE GARDEUR	3.4 [2.4-4.6]	1.7 [1.0-2.6]	0.8 [0.3-1.4]	2.0 [1.2-2.9]	1.1 [0.6-1.8]
14	CENTRE HOSPITALIER RÉGIONAL DE LANAUDIÈRE	13.9 [11.5-16.5]	10.5 [8.5-12.8]	7.6 [5.9-9.5]	16.1 [13.6-18.9]	15.7 [13.3-18.3]
	LANAUDIÈRE	8.3 [7.0-9.7]	5.8 [4.8-6.9]	4.0 [3.1-5.0]	8.4 [7.2-9.7]	7.8 [6.6-9.1]
15 45	HÔPITAL DE SAINT-EUSTACHE	6.6 [4.8-8.7]	7.3 [5.5-9.4]	4.8 [3.4-6.4]	5.7 [4.2-7.4]	5.4 [4.0-7.0]
56	CENTRE DE SANTÉ ET DE SERVICES SOCIAUX D'ARGENTEUIL	14.3 [8.8-21.1]	13.8 [8.5-20.3]	16.5 [10.6-23.8]	14.2 [8.7-21.1]	5.0 [2.0-9.4]*
81	HÔPITAL DE MONT-LAURIER	8.2 [4.5-13.1]	5.7 [2.7-9.8]	3.9 [1.6-7.3]	3.5 [1.2-6.9]	0.6 [0-2.3]*
101	HÔPITAL RÉGIONAL DE SAINT-JÉRÔME	10.5 [8.6-12.6]	12.0 [9.9-14.2]	8.3 [6.6-10.1]	8.9 [7.2-10.8]	8.5 [6.9-10.3]
103	HÔPITAL LAURENTIEN	8.1 [5.2-11.7]	4.9 [2.7-7.8]	3.2 [1.5-5.6]	3.7 [1.8-6.3]	2.5 [1.0-4.7]
	LAURENTIDES	9.2 [8.0-10.5]	9.3 [8.1-10.6]	6.7 [5.7-7.8]	7.1 [6.1-8.2]	6.1 [5.2-7.1]
16 1	HÔPITAL CHARLES-LEMOYNE	7.3 [5.9-8.8]	7.0 [5.6-8.5]	10.4 [8.7-12.2]	8.3 [6.8-10.0]	7.0 [5.6-8.5]
9	HÔPITAL DU HAUT-RICHELIEU	6.5 [4.9-8.4]	6.9 [5.2-8.8]	10.7 [8.7-12.9]	17.1 [14.5-19.9]	6.5 [4.9-8.3]*
10	HÔPITAL PIERRE-BOUCHER	2.3 [1.5-3.3]	5.3 [4.0-6.8]	3.7 [2.6-5.0]	4.4 [3.2-5.8]	6.2 [4.8-7.8]
35	HÔPITAL HONORÉ-MERCIER	4.2 [2.8-5.9]	4.5 [3.0-6.3]	6.0 [4.3-8.0]	2.7 [1.6-4.1]	3.6 [2.3-5.2]
37	HÔTEL-DIEU DE SOREL	6.3 [4.3-8.7]	4.1 [2.5-6.1]	3.0 [1.7-4.7]	1.6 [0.7-2.9]	2.7 [1.4-4.4]

42	HÔPITAL ANNA-LABERGE	2.8 [1.7-4.2]	2.8 [1.7-4.2]	2.1 [1.2-3.3]	7.5 [5.7-9.5]	8.0 [6.1-10.2]
46	HÔPITAL DE GRANBY	3.9 [2.3-6.0]	3.7 [2.1-5.7]	11.5 [8.5-15.0]	6.8 [4.6-9.5]	4.3 [2.6-6.4]
58	HÔPITAL DU SUROÏT	4.0 [2.5-5.8]	2.1 [1.1-3.4]	4.3 [2.8-6.1]	3.0 [1.8-4.5]	6.9 [4.9-9.2]*
99	HÔPITAL BROME-MISSISQUOI-PERKINS	1.5 [0.4-3.3]	6.3 [3.7-9.6]	5.6 [3.2-8.7]	2.8 [1.2-5.1]	13.9 [9.9-18.6]*
130	HÔPITAL BARRIE MEMORIAL	5.5 [2.0-10.8]	8.8 [4.2-15.1]	7.7 [3.7-13.2]	7.1 [3.2-12.5]	1.4 [0.1-4.1]*
	MONTÉRÉGIE	4.7 [4.2-5.2]	5.1 [4.6-5.7]	6.7 [6.1-7.3]	6.9 [6.3-7.5]	6.2 [5.6-6.8]
	Total	7.0 [6.8-7.2]	7.3 [7.1-7.5]	7.3 [7.1-7.5]	7.2 [7.0-7.4]	6.8 [6.6-7.0]*

* Significant statistical difference ($p < 0.05$) between incidence rates for Periods 1 through 13, 2013–2014 and 2014–2015.

When the incidence rate is 0, the confidence interval [CI] is not calculated.

Author

Comité de surveillance provinciale des infections nosocomiales (SPIN)

Editorial Committee

Christophe Garenc, Direction des risques biologiques et de la santé au travail, Institut national de santé publique du Québec

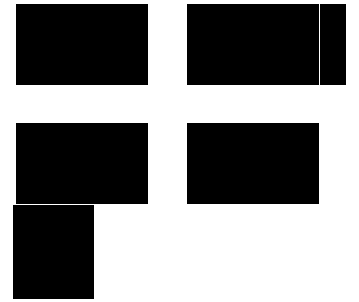
Yves Longtin, Hôpital général juif Sir Mortimer B. Davis

Muleka Ngenda-Muadi, Direction des risques biologiques et de la santé au travail, Institut national de santé publique du Québec

Mélissa Trudeau, Direction des risques biologiques et de la santé au travail, Institut national de santé publique du Québec

Institut national de santé publique

Québec



© Gouvernement du Québec, 2021

Source URL (modified on 10/02/2017 - 21:00):

<https://www.inspq.qc.ca/en/nosocomial-infections/spin-cdad/surveillance-results-2014-2015>

Links

- [1] https://www.inspq.qc.ca/sites/default/files/styles/echelle_600/public/images/maladies-infectieuses/spin/cd/2015/en/figure2.jpg
- [2] https://www.inspq.qc.ca/sites/default/files/styles/echelle_600/public/images/maladies-infectieuses/spin/cd/2015/en/figure3.jpg
- [3] <https://www.inspq.qc.ca/en/file/10903/download?token=AofoSX1W>