



Carbapenemase-Producing Gram Negative Bacilli Infections

Surveillance results: 2016-2017

From April 1st, 2016, to March 31st, 2017, 82 healthcare facilities took part in the surveillance of carbapenemase-producing Gram negative bacilli (CPGNB) infections, for a total of

4,448,000 patient days (Table 1). These facilities reported 17 healthcare-associated CPGNB HA-CPGNB infections among patients who acquired their strain during a current or previous hospitalization (categories 1a and 1b). The incidence rate of HA-CPGNB infection was 0.04 per 10,000 patient days. The acquisition rate of HA-CPGNB colonization was 0.57 per 10,000 patient days. Eight infections were observed among healthcare facilities that joined the surveillance this year. Two teaching and one non-teaching facilities discontinued their participation this year whereas three teaching and nine non-teaching facilities joined the program. Data were extracted on June 1, 2017.

**Institut national
de santé publique
Québec**

Date: October 5, 2017

Table 1 - Participation of Healthcare Facilities in the Surveillance of CPGNB Infections, Québec, 2016-2017

	2014-2015	2015-2016	2016-2017
Participating facilities (N)	68	73	82
Admissions (N)	499,604	567,972	650,557
Patient days (N)	3,521,830	3,858,658	4,448,999
Healthcare-associated BGNPC infections (cat. 1a and 1b) (N)	9	5	17
Healthcare-associated BGNPC colonizations (cat. 1a and 1b) (N)	56	73	253
Infected patients (cat. 1a and 1b) (N)	8	5	15

Open all

Incidence rate

In 2016-2017, the incidence rate of HA-CPGNB infection (cat. 1a and 1b) is 0.04 per 10,000 patient days in all participating healthcare facilities (Table 2). Incidence rate of HA-CPGNB infection in non-teaching facilities is comparable to the one in teaching facilities (Table 2).

Table 2 - Incidence Rate and Percentile Distribution of Healthcare-Associated CPGNB Infection (Cat. 1a and 1b) by Type of Healthcare Facility, Québec, 2016-2017 (Incidence Rate per 10,000 Patient Days [95% CI])

Healthcare facility vocation	Min.	25%	50%	75%	90%	Max.	Incidence rate
Non-teaching (N = 59)	0	0	0	0.12	0.24	0.66	0.03 [0.01 ; 0.07]
Teaching (N = 23)	0	0	0	0.14	0.2	0.43	0.04 [0.02 ; 0.08]
Total (N = 82)	0	0	0	0.12	0.24	0.66	0.04 [0.03 ; 0.06]

[95% CI]: 95% confidence interval.

Incidence rate

Among the 62 healthcare facilities participating in the three years of surveillance, the incidence rate of HA-CPGNB infections in 2016-2017 is 0.03 per 10,000 patient days and it doubled as compared to the one observed in 2015-2016 (Table 3). However, this difference is not statistically significant.

Table 3 - Change in Incidence Rate of Healthcare-Associated CPGNB Infection (Cat. 1a and 1b) by Type of Healthcare Facility, Québec, 2014-2015 to 2016-2017 (Incidence Rate per 10,000 Patient Days [95% CI])

Healthcare facility vocation	2014-2015		2015-2016		2016-2017	
	Infections (N)	Incidence rate	Infections (N)	Incidence rate	Infections (N)	Incidence rate
Non-teaching (N = 42)	1	0.01 [0.00 ; 0.04]	1	0.01 [0.00 ; 0.04]	3	0.02 [0.01 ; 0.06]
Teaching (N = 20)	8	0.04 [0.02 ; 0.08]	4	0.02 [0.01 ; 0.05]	6	0.03 [0.01 ; 0.07]
Total (N = 62)	9	0.03 [0.02 ; 0.05]	5	0.01 [0.00 ; 0.04]	9	0.03 [0.02 ; 0.05]

Note : Les données analysées sont celles des installations ayant participé à la surveillance de chaque année entre 2014-2015 et 2016-2017

Description of cases

A total of 29 infections (including 18 infections among new carriers) and 336 BGNPC colonizations are reported. Of the infections, 19 (65.5%) are healthcare associated, acquired either during a current hospitalization (16 infections, 9 in new carriers), a previous hospitalization (one in a new carrier) or ambulatory care (two in new carriers) of a reporting facility (cat. 1a, 1b and 1c). Ten infections (including six infections in new carriers) are related to a stay in a non-reporting facility, are community-associated or of unknown origin (cat. 2, 3 and 4).

Among the colonizations, 267 (79.5%) are acquired during a current hospitalization (207 colonizations and 9 infections in new carriers), a previous hospitalization (36 colonizations and one infection in a new carrier), or ambulatory care of reporting facilities (12 colonizations and two infections in new carriers) (cat. 1a, 1b and 1c). One colonization is observed among long-term care patients in the reporting facility (category 1d). Sixty eight (68) colonizations (including six infections in new carriers) are related to a stay in a non-reporting facility, are community-associated or of unknown origin (cat. 2, 3 and 4) (Table 4).

Table 4 - Cases of CPGNB Infections and Colonizations by Presumed Origin of Acquisition, Québec, 2016-2017 (N, %)

Category	Origin of acquisition	Infections		Colonizations	
		N	%	N	%
1a	Healthcare-associated with a current hospitalization in the reporting facility	16	55.2	216	65.1
1b	Healthcare-associated with a previous hospitalization in the reporting facility	1	3.4	37	11.3
1c	Healthcare-associated with ambulatory care in the reporting facility	2	6.9	14	3.8
1d	Healthcare-associated with long term unit in the reporting facility	0		1	
1e	Healthcare-associated with a specialty unit in the reporting facility	0		0	
2	Healthcare-associated with another facility	4		21	5.7

3	Community-associated	5	17.2	34	10.1
4	Unknown origin	1	3.4	13	3.8
Total		29	100.0	336	100.0

Note: Colonizations included infections in new carriers.

In 2016-2017, three primary bloodstream infections (BSI) and three secondary bloodstream infections are reported among the 29 infections (Table 5).

Table 5 - Number of Cases of CPGNB Infections from All Origins by Type of Infection and Number of all Origin CPGNB Secondary BSIs , Québec, 2016-2017 (N = 29)

Infection categories	Infection types	Infections (N)	Secondary bloodstream infections (N)
Primary BSI	CRBSI-MBI	1	-
	CRBSI	1	-
	Non-CRBSI	1	-
	HD	0	-
Primary infections	Urinary tract	11	1
	Abdominal	0	0
	Pulmonary	6	2
	Surgical site	1	0
	Skin and soft tissues	6	0
	Bones and joints	1	0
	Others	1	0
			3

**Institut national
de santé publique**

BSI: bloodstream infection.

CRBSI: catheter-related bloodstream infection.

MBI: mucosal barrier injury.

Non-CRBSI: non-catheter-related primary bloodstream infection.

HD: hemodialysis.

A total of three deaths within 30 days are observed following onset of infection (Table 6).

Table 6 - Number of death and 30-day all-cause case fatality in Patients with CPGNB, Québec, 2016-2017

	2014-2015	2015-2016	2016-2017
CPGNB infections (all origins)	13	8	29
Number of deaths	5	0	3
Case fatality	38.5 %	0 %	10.3 %

In the vast majority of cases (221/347 = 63.7%), contact information is missing. When specified, the majority of colonizations occur following extended contact with a known carrier of the same gene within the last three weeks or during an outbreak, whereas this is the case for all infections. Nosocomial colonizations are more related to the presence of contact whereas non-nosocomial colonizations are more related to geographic risk factors.

Table 7 - Characteristics Associated With CPGNB Colonizations and Infections, Québec, 2016-2017

Characteristics	Healthcare-associated colonizations	Healthcare-associated infections		Not healthcare-associated colonizations	Not healthcare-associated infections	
		New carrier	Known carrier		New carrier	Known carrier
N	243	10	7	75	8	4
Type of contact						
Contact not specified*	138	6	2	65	6	4
Close contact (24 hours in the same room) with a known carrier of the same gene during the last three weeks	6	0	0	2	0	0
Extended contact (24 hours in the same unit) with a known carrier of the same gene during the last three weeks	85	4	2	6	2	0
Outbreak occurring with the same gene in the healthcare facility	14	0	3	2	0	0
Geographic risk factors						
Travel outside of Canada in the last 12 months	1	0	0	17	3	1
Health care aboard with or without hospitalization	0	0	0	1		
Hospitalization outside Quebec over the last 12 months	1	0	0	14	5	1

**Institut national
de santé publique
Québec**

Health care outside Quebec in the last 12 months	0	0	0	2	1	1
Patient residing in a long-term care hospital	1	0	0	8	2	1
Other characteristics						
Active hematologic neoplasia	7	1	0	0	0	0
Neutropenia (<500 /mm ³)	6	2	0	0	0	0
Hemofiltration	2	0	0	1	1	0
Autologous bone marrow transplant (< 3 months)	0	0	0	0	0	0
Allogenic bone marrow transplant	0	0	0	0	0	0
Solid organ transplant	7	0	1	1	1	0
Non hematological neoplasia	25	2	0	1	0	0
Diabetes	44	3	1	23	2	0
Acute renal failure	14	0	1	4	0	0
Chronic renal failure	18	0	0	7	3	0
Hyperalimentation IV (< 72h before infection)	3	0	0	0	0	0
No characteristic	0	0	0	0	0	0

* None of the three contact types (close, extended or outbreak) has been specified.

Note: In order to detail the characteristics of the colonizations, the latter does not include infections in new carriers.

Note: The different contact types are mutually exclusive. In the situation where more than one contact is specified, the closest contact is selected.

Note: colonizations and nosocomial infections refer to categories 1a and 1b.

Note: Known carriers: infections from already known patients carrying the same gene.

Note: New carriers: infections from patients not known carrier or carrier of a new gene

Institut national de santé publique

Colonization Screening Protocol

In 2016-2017, the acquisition rate of HA-CPGN5 colonization (cat. 1a and 1b) is 0.47 per 10,000 patient days among the 62 healthcare facilities participating in the three-year surveillance (Table 8) and 0.53 per 10,000 patient days among all facilities in 2016-2017 (Table 8).

Table 8 - Change in the Number of Cases and Acquisition Rate of Health-associated

CPGNB Colonization (Cat. 1a and 1b) by Type of Healthcare Facility, Québec, 2014-2015 to 2015-2016 (Acquisition Rate of Healthcare-Associated CPGNB Colonization per 10,000 patient days)

Healthcare facilities vocation	2014-2015		2015-2016		2016-2017	
	Colonizations (N)	Acquisition rate	Colonizations (N)	Acquisition rate	Colonizations (N)	Acquisition rate
Non-teaching (N = 42)	33	0.22 [0.16 ; 0.31]	50	0.34 [0.26 ; 0.45]	59	0.37 [0.29 ; 0.48]
Teaching (N = 20)	23	0.12 [0.08 ; 0.18]	23	0.12 [0.08 ; 0.18]	108	0.56 [0.46 ; 0.68]*
Total (N = 62) *	56	0.16 [0.12 ; 0.21]	73	0.17 [0.17 ; 0.26]	167	0.47 [0.40 ; 0.55]*

Note : Number of facilities participating in the three years surveillance.

* Significant difference (p < 0.05) between acquisition rate of 2015-2016 and 2016-2017.

Table 9 shows the number of non-teaching facilities that indicate the type of screening used at admission (non-teaching: 47 out of 59; teaching: 19 out of 23) and during hospitalization (non-teaching: 40 out of 59; teaching: 20 out of 23).

Table 9 - Number of Healthcare Facilities that Indicated the Type of Screening Procedure Used at Admission and During Hospitalization by Type of Facility, Québec, 2016-2017

	Number of facilities that specified the type of screening procedure used*			
	At admission	During hospitalization	Not specified	Total
Non-teaching (N = 59)	47	40	15	51
Teaching (N = 23)	19	20	4	23
Total (N = 82)	66	60	19	74

* The "at admission" and "during hospitalization" categories are not mutually exclusives.

Tables 10 and 11 feature the total number of screening tests performed at admission and during hospitalization, as well as the mean number of CPGNB screening tests per admission. In 2015-2016, the total number of screening tests is 64,302, while the average number of screening tests is 0.124. In 2016-2017, this represents an increase of 196% for the total number of screening tests and 142% for the average of the screening tests.

Table 10 - Total Number of Screening Tests Performed at Admission and During Hospitalization by Type of Healthcare Facility, Québec, 2016-2017

Healthcare facility vocations	Number of screening tests			Total
	At admission	During hospitalization	Not specified	
Non-teaching	21,941	30,575	3,383	65,901
Teaching	21,600	6,847		
Total	53,593	125,422	057	194,072

Table 11 - Mean Number of CPGNB Screening Tests by Type of Healthcare Facility, Québec, 2016-2017 (Mean CPGNB Screening Tests per Admission)

Healthcare facility vocations	Mean number of CPGNB screening score*		
	At admission	During hospitalization	Total
Non-teaching	0.07	0.11	0.2
Teaching	0.09	0.28	0.41
Total	0.08	0.19	0.30

* The "at admission" and "during hospitalization" categories are not mutually exclusives.

Microbiology

Figure 1 features the distribution of microorganisms isolated from all cases. A total of 360 microorganisms are isolated from 347 colonization and infection cases. The most frequently isolated microorganisms are *Citrobacter freundii* (34.8%), *Enterobacter cloacae* (22.7%), *Klebsiella pneumoniae* (15.6%) and *Escherichia coli* (15.3%). In two cases of colonization, three and four different microorganisms are isolated. In 22 cases, two microorganisms are isolated. Of these, four became infected.

Figure 1 - Categories of Isolated Microorganisms for all Cases (n = 347), Québec, 2016-2017

Isolated Microorganisms - All Cases (n = 359)

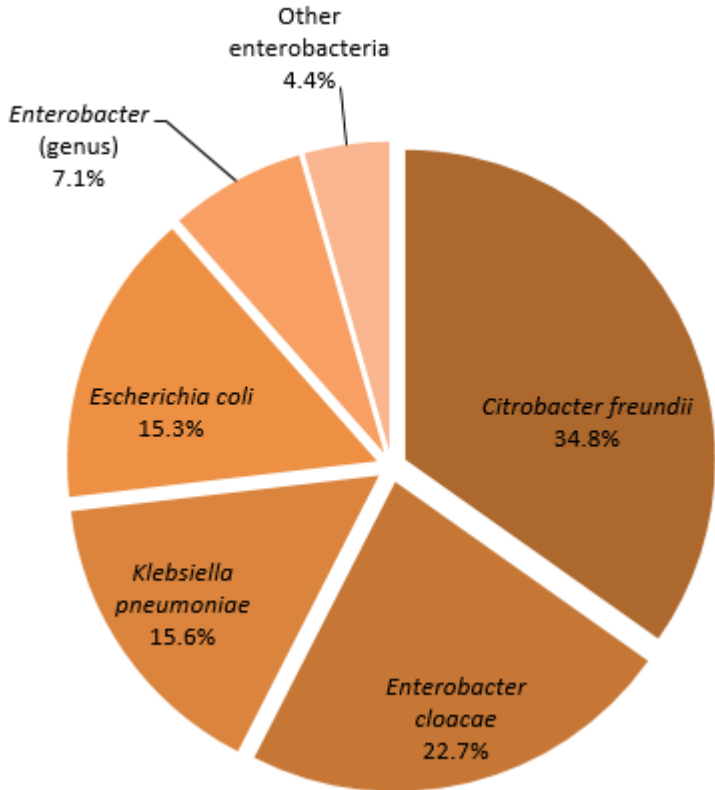


Table 12 shows the gene encoding carbapenemase identified in the various isolated microorganisms. The vast majority of the resistance genes linked to the various microorganisms is of the KPC type. Five strains of *Escherichia coli*, four strains of *Klebsiella pneumoniae*, one *Citrobacter freundii* strain and one strain of another enterobacterium carry the NDM gene. A strain of *Klebsiella pneumoniae* and a strain of *Escherichia Coli* carry both NDM and OXA-48 genes whereas a strain of *Enterobacter cloacae* bears both IMP and IMI / NMC genes.

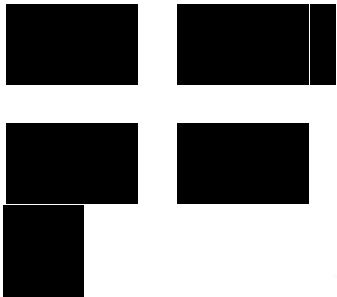
Table 12 - Distribution of Carbapenemase-encoding Genes from Reported Microorganisms, Québec, 2016-2017

Gene Name	%	Microorganism		
		Name	N	%
KPC	69.1	<i>Citrobacter freundii</i>	89	35.9
		<i>Enterobacter cloacae</i>	45	18.1
		<i>Klebsiella pneumoniae</i>	42	16.9
		<i>Escherichia coli</i>	26	10.5
		<i>Enterobacter</i> (genus)	23	9.3
		<i>Klebsiella oxytoca</i>	9	3.6
		<i>Serratia marcescens</i>	3	1.2
		Other enterobacteria	11	4.4
			248	
OXA-48	15.3	<i>Citrobacter freundii</i>	27	49.1
		<i>Escherichia coli</i>	20	36.4
		<i>Klebsiella pneumoniae</i>	6	10.9
		<i>Klebsiella oxytoca</i>	1	1.8
		<i>Enterobacter</i> (genus)	1	1.8
			55	
IMI/NMC	8.9	<i>Enterobacter cloacae</i>	30	93.8
		<i>Enterobacter</i> (genus)	2	6.3

32

**Institut national
de santé publique**

Québec



OXA48/NDM	0.6	<i>Klebsiella pneumoniae</i>	1	50
		<i>Escherichia coli</i>	1	50
			2	
VIM	0.6	<i>Citrobacter freundii</i>	1	50
		Other enterobacteria	1	50
			2	
IMP	0.3	<i>Enterobacter cloacae</i>	1	100
			1	
IMP/IMI_NMC	0.3	<i>Enterobacter cloacae</i>	1	100
			1	
Total			359	

KPC: *Klebsiella pneumoniae* carbapenemase (class A).

OXA-48: Family of Oxacillinase-48 (Class D) genes.

IMI/NMC: Imipenem-hydrolysing B-lactamase / Not metalloenzyme carbapenemase.

NDM: New-dehli metallo- β -lactamase (Class B).

SME: *Serratia marcescens* enzyme.

IMP: Imipenemase (IMP) metallo- β -lactamase

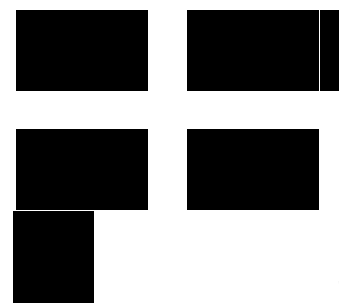
VIM : Verona imipenemase

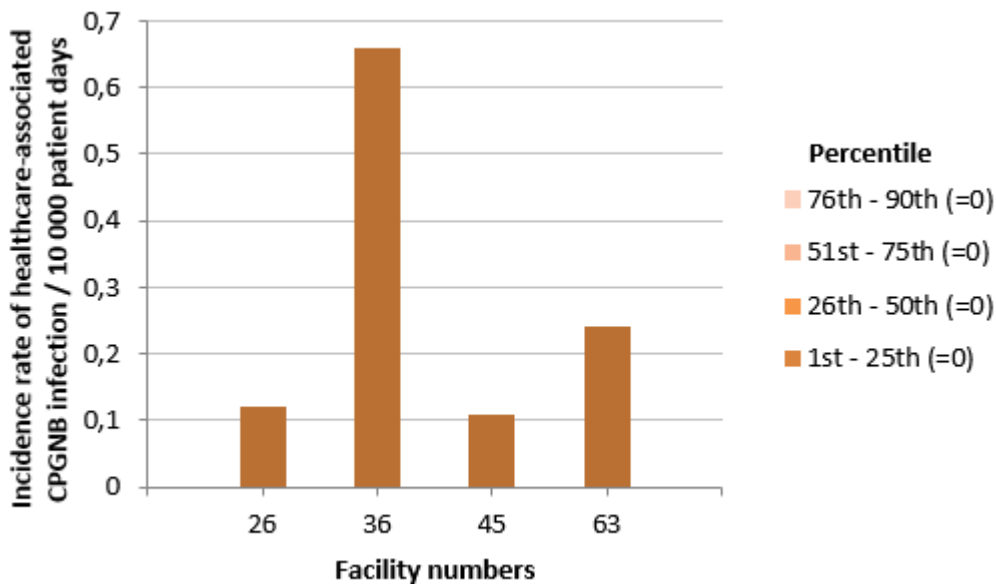
Data per facility

The incidence rate of HA-CPGNB infection and the percentile rankings by type of facility are shown in figures 2 and 3. Figures 4 and 5 present the rate of acquisition of HA-CPGNB colonization by type of facility.

Figure 2 - Incidence Rate and Percentile Ranking of Healthcare-Associated CPGNB infection (Cat. 1a and 1b) for Non-Teaching Healthcare Facilities, Québec, 2016-2017 (Incidence Rate per 10,000 Patient Days)

***Institut national
de santé publique***
Québec

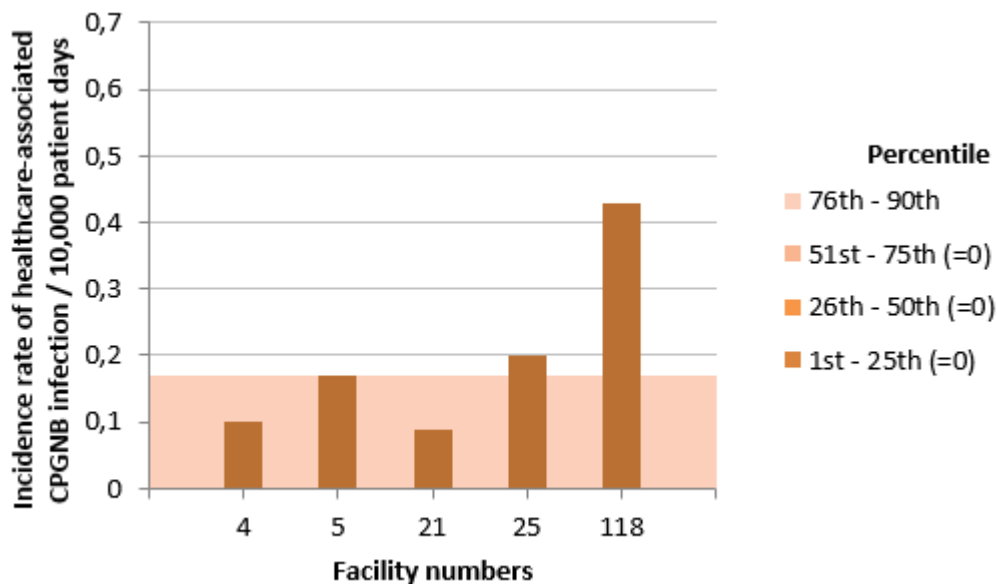




[3]

Note: Facilities 9, 10, 11, 14, 16, 19, 23, 32, 34, 35, 37, 38, 39, 40, 41, 42, 44, 46, 47, 49, 52, 53, 56, 58, 59, 61, 64, 65, 67, 70, 71, 72, 74, 75, 77, 80, 81, 82, 84, 85, 86, 88, 89, 91, 97, 99, 100, 101, 103, 107, 109, 111, 112, 113 and 130 did not report any cases of infection in 2016-2017.

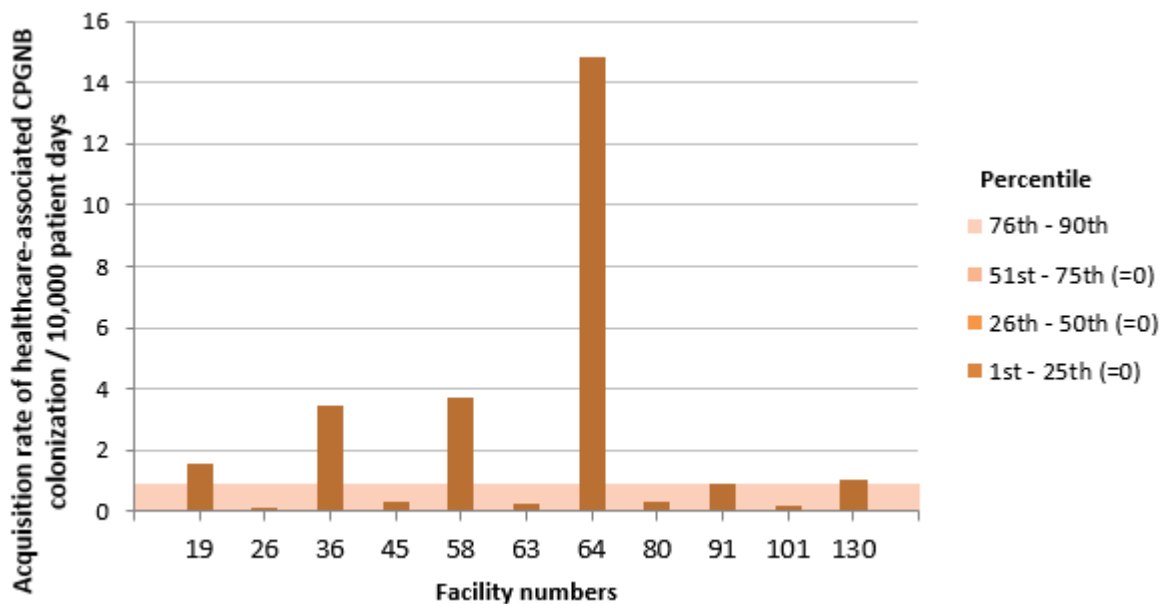
Figure 3 - Incidence Rate and Percentile Ranking of Healthcare-Associated CPGNB Infection (Cat. 1a and 1b) for Teaching Healthcare Facilities, Québec, 2016-2017 (Incidence Rate per 10,000 Patient Days)



[4]

Note: Facilities 2, 3, 6, 7, 8, 13, 15, 18, 20, 22, 24, 27, 28, 29, 30, 31, 33 and 48 did not report any cases of infection in 2016-2017.

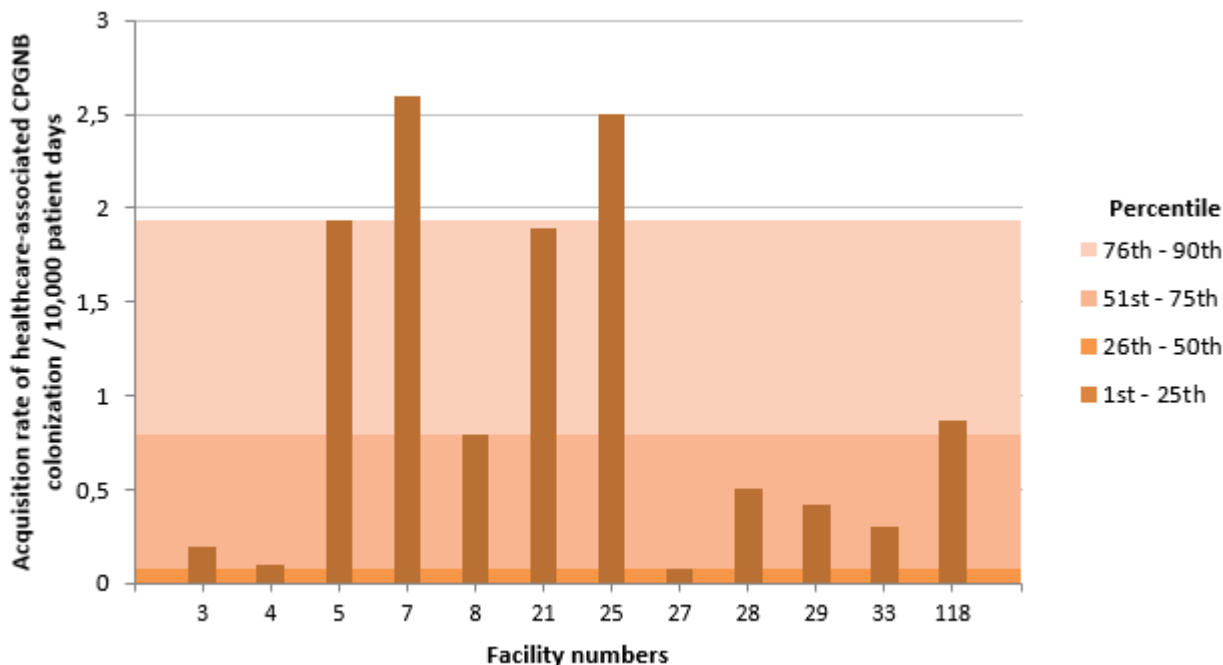
Figure 4 - Acquisition Rate of Healthcare-Associated CPGNB Colonization (Cat. 1a and 1b) for Non-Teaching Healthcare Facilities, Québec, 2016-2017 (Acquisition Rate per 10,000 Patient Days)



[5]

Note: Facilities 9, 10, 11, 14, 16, 23, 32, 34, 35, 37, 38, 39, 40, 41, 42, 44, 46, 47, 49, 52, 53, 56, 59, 61, 65, 67, 70, 71, 72, 74, 75, 77, 81, 82, 84, 85, 86, 88, 89, 97, 99, 100, 103, 107, 109, 111, 112 and 113 did not report any cases of colonization in 2016-2017.

Figure 5 - Acquisition Rate of Healthcare-Associated CPGNB Colonization (Cat.1a and 1b) for Teaching Healthcare Facilities, Québec, 2016-2017 (Acquisition Rate of Healthcare-Associated CPGNB Colonization per 10,000 Patient Days)



Note: Facilities 2, 6, 13, 15, 18, 20, 22, 24, 30, 31 and 48 did not report any cases of colonization in 2016-2017.

At the facility level, in 2016-2017, the incidence rate of HA-CPGNB infections ranged from 0 to 0.93 per 10,000 patient days, whereas the acquisition rate of HA-CPGNB colonization ranged from 0 to 14.83 per

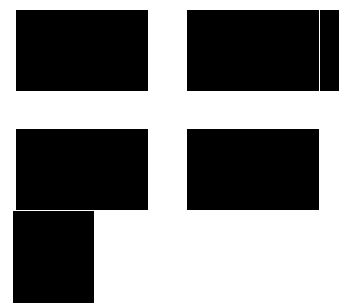
Québec

10,000 patient days. A total of 59 facilities (71.9%) did not report any HA-CPGNB infection or colonization in 2016-2017. A detailed summary of the surveillance data for HA-CPGNB infection by healthcare facility can be found in table 13.

Table 13 - Incidence Rate of Healthcare-Associated CPGNB Infection (cat. 1a and 1b), Acquisition Rate of Healthcare-Associated CPGNB Colonization and Mean CPGNB Screening Tests by Admission and by Facility, Québec, 2016-2017 (Incidence Rate per 10,000 Patient Days [95% CI]; Acquisition Rate of Colonization per 10,000 Patient Days)

HR	Facility		Incidence rate of CPGNB infection (cat. 1a+1b) [95% CI] (N)	Acquisition rate of HA-CPGNB colonization (cat. 1a+1b) [95% CI] (N)	Mean CPGNB screening tests per admission*
	Number	Name			
	16	HÔPITAL RÉGIONAL DE RIMOUSKI	0	0	0.13
	32	CENTRE HOSPITALIER RÉGIONAL DU GRAND-PORTAGE	0	0	0.05
1	61	HÔPITAL NOTRE-DAME-DE-FATIMA	0	0	0.05
	71	HÔPITAL DE MATANE	0	0	0.22
	77	HÔPITAL D'AMQUI	0	0	0
	84	HÔPITAL DE NOTRE-DAME-DU-LAC	0	0	0.08
		BAS-SAINT-LAURENT	0	0	0.11
	20	HÔPITAL DE CHICOUTIMI	0	0	0.04
	67	HÔPITAL ET CENTRE DE RÉADAPTATION DE JONQUIÈRE	0	0	0.01
2	74	HÔPITAL DE DOLBEAU-MISTASSINI	0	0	0.01
	88	HÔPITAL. CLSC ET CENTRE D'HÉBERGEMENT DE ROBERVAL	0	0	0.01
	100	HÔPITAL DE LA BAIE	0	0	0.01
	112	HÔPITAL D'ALMA	0	0	0.01
		HÔPITAL DE QUÉBEC - HÔPITAL DE LA SALLE	0	0	0.02

**Institut national
de santé publique**
Québec



HR	Facility		Incidence rate of CPGNB infection (cat. 1a+1b) [95% CI] (N)	Acquisition rate of HA-CPGNB colonization (cat. 1a+1b) [95% CI] (N)	Mean CPGNB screening tests per admission*
	Number	Name			
3	2	HÔPITAL DE L'ENFANT-JÉSUS	0	0	0.29
	7	PAVILLON L'HÔTEL-DIEU DE QUÉBEC	0	2.60 [1.71 ; 3.95] (22)	1.19
	24	HÔPITAL DU SAINT-SACREMENT	0	0	0.38
	27	PAVILLON CENTRE HOSPITALIER DE L'UNIVERSITÉ LAVAL	0	0.08 [0.01 ; 0.56] (1)	0.22
	28	PAVILLON SAINT-FRANCOIS D'ASSISE	0	0.50 [0.21 ; 1.21] (5)	0.38
	33	INSTITUT UNIVERSITAIRE DE CARDIOLOGIE ET DE PNEUMOLOGIE DE QUÉBEC	0	0.30 [0.10 ; 0.93] (3)	0.36
	59	HÔPITAL DE BAIE-SAINT-PAUL	0	0	0.07
	86	HÔPITAL DE LA MALBAIE	0	0	0.05
		CAPITALE-NATIONALE	0	0.51 [0.36 ; 0.72] (31)	0.4
		23 HÔTEL-DIEU D'ARTHABASKA	0	0	0.01
4	31	PAVILLON SAINTE-MARIE	0	0	0
	41	HÔPITAL DU CENTRE-DE-LA-MAURICIE	0	0	0
	44	HÔPITAL SAINTE-CROIX	0	0	0.06
	85	CENTRE DE SANTÉ ET DE SERVICES SOCIAUX DU HAUT-SAINT-AURICE	0	0	0.03
		MAURICIE ET CENTRE-DU-QUÉBEC	0	0	0.01
	15	HÔPITAL FLEURIMONT	0	0	0
5	30	HÔTEL-DIEU DE SHERBROOKE	0	0	0
	66	HÔPITAL DE PRINCE-ALBERT	0	0	0
	90	CENTRE DE SANTÉ ET DE SERVICES SOCIAUX NEPHÉLÉ	0	0	0
	75	CENTRE DE SANTÉ ET DE SERVICES SOCIAUX DU GRANIT	0	0	0
	99	HÔPITAL BRODEUR-MASSISQUÉ	0	0	0
	ESTRIE	0	0	0	

**Institut national
de santé publique
Québec**

HR	Facility		Incidence rate of CPGNB infection (cat. 1a+1b) [95% CI] (N)	Acquisition rate of HA-CPGNB colonization (cat. 1a+1b) [95% CI] (N)	Mean CPGNB screening tests per admission*
	Number	Name			
	3	GLEN - ROYAL VICTORIA	0	0.19 [0.05 ; 0.73] (2)	0.17
	4	HÔPITAL NOTRE-DAME DU CHUM	0.10 [0.02 ; 0.66] (1)	0.10 [0.02 ; 0.66] (1)	0.24
	5	HÔPITAL GÉNÉRAL JUIF	0.17 [0.05 ; 0.53] (3)	1.94 [1.39 ; 2.71] (34)	1.51
	6	GLEN - ENFANTS	0	0	0.09
	8	PAVILLON MAISONNEUVE/PAVILLON MARCEL-LAMOUREUX	0	0.79 [0.48 ; 1.31] (15)	0.21
	12	CENTRE HOSPITALIER UNIVERSITAIRE SAINTE-JUSTINE	-	-	-
	13	INSTITUT DE CARDIOLOGIE DE MONTRÉAL	0	0	0.17
	21	HÔPITAL SAINT-LUC DU CHUM	0.09 [0.01 ; 0.71] (1)	1.89 [1.22 ; 2.93] (20)	0.45
	22	HÔTEL-DIEU DU CHUM	0	0	0.27
6	25	HÔPITAL DU SACRÉ-COEUR DE MONTRÉAL	0.20 [0.07 ; 0.61] (3)	2.5 [1.82 ; 3.43] (38)	1.6
	26	HÔPITAL DE VERDUN	0.12 [0.02 ; 0.87] (1)	0.12 [0.02 ; 0.87] (1)	0.03
	29	HÔPITAL GÉNÉRAL DE MONTRÉAL	0	0.42 [0.14 ; 1.30] (3)	0.34
	34	HÔPITAL SANTA CABRINI	0	0	0.02
	36	HÔPITAL GÉNÉRAL DU LAKESHORE	0.66 [0.27 ; 1.59] (5)	3.45 [2.35 ; 5.07] (26)	1.06
	8	HÔPITAL JEAN TALON	0	0	0.61
	48	CENTRE HOSPITALIER DE ST. MARY	0	0	0.09
	6	HÔPITAL D'ÉLACINE	-	-	-
	80	HÔPITAL TESSIER	0	0.34 [0.00 ; 2.31] (7)	0.24
	83	HÔPITAL DE LA SAULE	0	0	0.24
	118	HÔPITAL NEUROLOGIQUE DE MONTRÉAL	0.13 [0.00 ; 3.11] (1)	0.87 [0.00 ; 3.41] (1)	0.24

**Institut national
de santé publique**

Québec

HR	Facility		Incidence rate of CPGNB infection (cat. 1a+1b) [95% CI] (N)	Acquisition rate of HA-CPGNB colonization (cat. 1a+1b) [95% CI] (N)	Mean CPGNB screening tests per admission*
	Number	Name			
		MONTRÉAL	0.11 [0.07 ; 0.18] (15)	1.00 [0.85 ; 1.18] (143)	0.62
	39	HÔPITAL DE GATINEAU	0	0	0
	40	HÔPITAL DE HULL	0	0	0.11
7	51	HÔPITAL DE MANIWAKI	-	-	-
	95	HÔPITAL DU PONTIAC	-	-	-
	111	HÔPITAL DE PAPINEAU	0	0	0.02
		OUTAOUAIS	0	0	0.04
	47	HÔPITAL DE ROUYN-NORANDA	0	0	0.01
	52	HÔPITAL D'AMOS	0	0	0
8	65	HÔPITAL ET CLSC DE VAL-D'OR	0	0	0.02
	70	CENTRE DE SOINS DE COURTE DURÉE LA SARRE	0	0	0
	82	PAVILLON SAINTE-FAMILLE	0	0	0.13
		ABITIBI-TÉMISCAMINGUE	0	0	0.02
	64	HÔPITAL LE ROYER	0	14.83 [9.46 ; 23.25] (19)	1.64
9	72	HÔPITAL ET CENTRE D'HÉBERGEMENT DE SEPT-ÎLES	0	0	0.03
		CÔTE-NORD	0	9.76 [6.22 ; 15.30] (19)	1.1
10	96	CENTRE DE SANTÉ DE CHIBOUGAMAU	-	-	-
		NORD DU QUÉBEC	-	-	-
	53	HÔPITAL DE CHANDLER	0	0	0
	11	HÔPITAL HOTEL-DU-ROUVELOU	0	0.90 [0.13 ; 6.36] (1)	0.58
11	97	HÔPITAL DE MARIA	0		
	107	HÔPITAL DE LA RICHIEPÉ	0	0	0.22
	109	HÔPITAL DE SAINTE-ANNE-DES-MONTS	0		

**Institut national
de santé publique**

Québec

HR	Facility		Incidence rate of CPGNB infection (cat. 1a+1b) [95% CI] (N)	Acquisition rate of HA-CPGNB colonization (cat. 1a+1b) [95% CI] (N)	Mean CPGNB screening tests per admission*
	Number	Name			
		GASPÉSIE-ÎLES-DE-LA-MADELEINE	0	0.18 [0.03 ; 1.22] (1)	0.19
	18	HÔTEL-DIEU DE LÉVIS	0	0	0.16
12	63	HÔPITAL DE SAINT-GEORGES	0.24 [0.03 ; 1.73] (1)	0.24 [0.03 ; 1.73] (1)	0.79
	89	HÔPITAL DE MONTMAGNY	0	0	0.03
	113	HÔPITAL DE THETFORD MINES	0	0	0.03
		CHAUDIÈRE-APPALACHES	0.06 [0.01 ; 0.44] (1)	0.06 [0.01 ; 0.44] (1)	0.28
13	19	HÔPITAL CITÉ DE LA SANTÉ	0	1.57 [1.09 ; 2.26] (29)	0.37
		LAVAL	0	1.57 [1.09 ; 2.26] (29)	0.37
14	11	HÔPITAL PIERRE-LE GARDEUR	0	0	0.02
	14	CENTRE HOSPITALIER RÉGIONAL DE LANAUDIÈRE	0	0	0
		LANAUDIÈRE	0	0	0.02
	45	HÔPITAL DE SAINT-EUSTACHE	0.11 [0.02 ; 0.78] (1)	0.33 [0.11 ; 1.02] (3)	0.11
	56	CENTRE DE SANTÉ ET DE SERVICES SOCIAUX D'ARGENTEUIL	0	0	0.32
15	81	HÔPITAL DE MONT-LAURIER	0	0	0.16
	101	HÔPITAL RÉGIONAL DE SAINT-JÉRÔME	0	0.18 [0.04 ; 0.73] (2)	0.12
	103	HÔPITAL LAURENTIEN LAURENTIDES	0	0	0.05
			0.04 [0.01 ; 0.25] (1)	0.19 [0.08 ; 0.45] (5)	0.12

**Institut national
de santé publique**

Québec

HR	Facility		Incidence rate of CPGNB infection (cat. 1a+1b) [95% CI] (N)	Acquisition rate of HA-CPGNB colonization (cat. 1a+1b) [95% CI] (N)	Mean CPGNB screening tests per admission*
	Number	Name			
	1	HÔPITAL CHARLES LEMOYNE	-	-	-
	9	HÔPITAL DU HAUT-RICHELIEU	0	0	0.01
	10	HÔPITAL PIERRE-BOUCHER	0	0	0
	35	HÔPITAL HONORÉ-MERCIER	0	0	0.04
16	37	HÔTEL-DIEU DE SOREL	0	0	0
	42	CENTRE HOSPITALIER ANNA-LABERGE	0	0	0.08
	58	HÔPITAL DU SUROÎT	0	3.69 [2.45 ; 5.55] (23)	1.92
	130	HÔPITAL BARRIE MEMORIAL	0	1.04 [0.15 ; 7.32] (1)	1.44
		MONTÉRÉGIE	0	0.51 [0.34 ; 0.76] (24)	0.24
		Total	0.04 [0.03 ; 0.06] (17)	0.57 [0.50 ; 0.64] (253)	0.3

* Number of screening tests divided by number of admissions.
- Healthcare facilities that did not participate in 2016-2017.
HR : Health region.

Author

Comité de surveillance provinciale des infections nosocomiales (SPIN)

Editorial Committee

Christophe Garel, Direction des risques biologiques et de la santé au travail, Institut national de santé publique du Québec

Christian Lavallée, Hôpital Maisonneuve-Rosemont

Danielle Moisan, Centre hospitalier régional du Grand-Portage

Muleka Ngenda-Muindi, Direction des risques biologiques et de la santé au travail, Institut national de santé publique du Québec

Isabelle Rocher, Direction des risques biologiques et de la santé au travail, Institut national de santé

Québec

publique du Québec

Claude Tremblay, Centre hospitalier universitaire de Québec – Université Laval

Mélissa Trudeau, Direction des risques biologiques et de la santé au travail, Institut national de santé publique du Québec

Jasmin Villeneuve, Direction des risques biologiques et de la santé au travail, Institut national de santé publique du Québec

Source URL (modified on 08/16/2018 -

16:12):<https://www.inspq.qc.ca/en/nosocomial-infections/spin-bgnpc/surveillance-results-2016-2017>

Links

[1] <https://www.inspq.qc.ca/infections-nosocomiales/spin/bgnpc/surveillance-2016-2017> [2]

<https://www.inspq.qc.ca/sites/default/files/images/maladies-infectieuses/spin/bgnpc/2017/en/figure1.png> [3]

<https://www.inspq.qc.ca/sites/default/files/images/maladies-infectieuses/spin/bgnpc/2017/en/figure2.png> [4]

<https://www.inspq.qc.ca/sites/default/files/images/maladies-infectieuses/spin/bgnpc/2017/en/figure3.png> [5]

<https://www.inspq.qc.ca/sites/default/files/images/maladies-infectieuses/spin/bgnpc/2017/en/figure4.png> [6]

<https://www.inspq.qc.ca/sites/default/files/images/maladies-infectieuses/spin/bgnpc/2017/en/figure5.png> [7]

<https://www.inspq.qc.ca/en/file/11048/download?token=b67oDXjd>

***Institut national
de santé publique***
Québec

