



Carbapenemase-Producing Gram Negative Bacilli (CPGNB) Infections

Surveillance results: 2015-2016

From April 1, 2015, to March 31, 2016, 73 healthcare facilities took part in the surveillance of carbapenemase-producing Gram negative bacilli (CPGNB) infections, for a total of 3,749,277 patient days (Table 1). In total, four CPGNB infections were reported among patients who acquired their strain during a current or previous hospital stay in the reporting facility (categories 1a and 1b). The incidence rate of healthcare-associated CPGNB infection (cat. 1a and 1b) was 0.011 per 10,000 patient days. The acquisition rate of healthcare-associated CPGNB colonization (cat. 1a and 1b) was 0.197 per 10,000 patient days. Two teaching facilities and three non-teaching facilities participating last year did not participate this year whereas one teaching and nine non-teaching facilities were added. Data was extracted on May 31st, 2016.

Table 1 - Participation of Healthcare Facilities in the Surveillance of CPGNB Infections. Québec. 2015-2016

	2014-2015	2015-2016
Participating facilities (N)	68	73
Admissions (N)	453,616	519,688
Inpatient days (N)	3,421,806	3,749,277
Cases of healthcare-associated CPGNB infection (cat. 1a and 1b) (N)	9	4
Cases of healthcare-associated CPGNB colonization (cat. 1a and 1b) (N)	58	74
Infected patients (cat. 1a + 1b) (N)	8	4

Open all

Incidence rate

In 2015–2016, the incidence rate of healthcare-associated CPGNB infection (cat. 1a and 1b) was 0.011 per 10,000 patient days in all participating healthcare facilities (Table 2).

All reported infections occurred in teaching healthcare facilities (Table 2).

Table 2 - Incidence Rate and Percentile Distribution of Healthcare-Associated CPGNB Infection (Cat. 1a and 1b) by Type of Healthcare Facility, Québec, 2015-2016 (Incidence Rate per 10,000 Patient Days [95% CI])

Type of Facility	Min.	25 %	50 %	75 %	90 %	Max.	Taux d'incidence
Non-teaching (N = 51)	0	0	0	0	0	0	0
Teaching (N = 22)	0	0	0	0	0.097	0.233	0.020 [0.005 ; 0.045]‡
Total (N = 73)	0	0	0	0	0	0.233	0.011 [0.003 ; 0.024]

[I.C. 95%]: 95% confidence interval.

‡ Significant statistical difference ($p < 0.05$) between incidence rate in non-teaching and teaching healthcare facilities.

Among the 63 healthcare facilities participating in the two years of surveillance, the incidence rate of healthcare-associated CPGNB infections in 2015-2016 was 0.012 per 10,000 patient days and it was half the incidence rate observed in 2014-2015 (Table 3)

Table 3 - Change in Incidence Rate of Healthcare-Associated CPGNB infection (Cat1. 1a and 1b) by Type of Healthcare Facility, Québec, 2014-2015 to 2015-2016 (Incidence Rate per 10,000 Patient Days [95% CI])

Facilities	2014-2015		2015-2016	
	Number of Infections	Incidence Rate	Number of Infections	Incidence Rate
Non-teaching (N = 42)	1	0.007 [0 ; 0.027]	0	0

Teaching (N = 21)	8	0.042 [0.018 ; 0.076]	4	0.020 [0.005 ; 0.045]
Total (N = 63) *	9	0.027 [0.012 ; 0.047]	4	0.012 [0.003 ; 0.026]

* Number of facilities participating in each of the two years of surveillance.

Description of cases

In total, 98 colonizations (including 6 infections) of CPGNB were reported: 81 (82.6%) were identified in patients who acquired their CPGNB colonization during a current hospital stay (3 infections and 68 colonizations), during a previous hospital stay (1 infection and 2 colonizations) or in ambulatory care of the reporting facility (7 colonizations) (cat. 1a, 1b and 1c). One infection have been observed in a patient from the psychiatry unit. A total of 7 colonizations were associated to another facility (1 infection and 6 colonizations), to the community (7 colonizations) or remained unknown (2 colonizations) (cat. 2, 3 and 4) (Table 4).

Table 4 - Cases of CPGNB Infections and Colonizations by Presumed Origin of Acquisition, Québec, 2015-2016 (N, %)

Category	Origin of Acquisition	Infection	Colonization
1a	Healthcare-associated with a current hospital stay in the reporting facility	3 (50.0%)	71 (72.4%)
1b	Healthcare-associated with a previous hospital stay in the reporting facility	1 (16.7%)	3 (3.1%)
1c	Healthcare-associated with ambulatory care in the reporting facility	0 (0%)	7 (7.1%)
1d	Healthcare-associated with long-term unit in the reporting facility	0 (0%)	0 (0%)
1e	Healthcare-associated with psychiatry unit in the reporting facility	1 (16.7%)	1 (1.0%)
2	Healthcare-associated with another facility	1 (16.7%)	7 (7.1%)
3	Community-associated	0 (0%)	7 (7.1%)
4	Unknown origin	0 (0%)	2 (2.0%)
	Total	6	98

Note: Colonizations included infections.

In 2015-2016, among 6 infections, no primary bloodstream infection (BSI) was observed (Table 5).

Table 5 - Number of Cases of CPGNB Infections from All Origins by Type of Infection and Number of all Origin CPGNB Secondary BSIs , Québec, 2015-2016 (N = 6)

Type of Infection	Infections (N)	Secondary Bloodstream Infections (N)
Primary BSI		
CRBSI-MBI	0	-
CRBSI	0	-
Non-CRBSI-MBI	0	-
Non-CRBSI	0	-
HD	0	-
Others		
Urinary tract	2	0
Abdominal	0	0
Pulmonary	2	0
Surgical site	1	0
Skin and soft tissue	0	0
Bones and joints	1	0
Others	0	0
Total	6	0

BSI: bloodstream infection.

CRBSI: catheter-related bloodstream infection.

MBI: mucosal barrier injury.

Non-CRBSI: non-catheter-related primary bloodstream infection.

HD: hemodialysis.

No deaths within 30 days were observed following onset of infection (Table 6).

Table 6- Number of Deaths and 30-days all Cause Case-fatality in Patients Infected by a CPGNB, Québec, 2015-2016

	2014-2015	2015-2016
CPGNB infections (all origins)	13	6
Number of deaths	5	0
Case fatality	38.5%	0%

Table 7 - Risk Factors Associated With CPGNB Colonization, Québec, 2014-2015

Risk Factors	New Carrier No contact with a known carrier	New Carrier Contact with a known carrier	Known Carrier	Information not available on the carrier's status
N	68	12	3	15
Contact with known carrier	0	12	0	4
Healthcare abroad (with or without hospitalization)	3	0	0	0
Travel abroad in the last 12 months	8	0	0	0
Other risks				
Carba-3GC*-Fluo	6	4	0	1
No Carba-3GC-Fluo	6	2	0	0
Diabetes	15	2	0	3
Acute renal failure	3	0	0	0
Chronic renal failure	5	0	0	1
Non hematologic active neoplasia	12	1	1	2
Solid organ transplant	2	1	0	0

* 3GC: 3rd generation cephalosporin.

Carba-3GC-Fluo: Taking a carbapenem/3rd generation cephalosporin/fluoroquinolone in the last two weeks prior to diagnosis.

No Carba-3GC-Fluo: not taking a carbapenem/3rd generation cephalosporin/fluoroquinolone in the last two weeks prior to diagnosis.

Colonization Screening Protocol

In 2015-2016, the acquisition rate of healthcare-associated CPGNB colonization (cat. 1a and 1b) was 0.215 per 10,000 patient days among healthcare facilities participating in the two years of surveillance (Table 8) and was 0.197 per 10,000 patient days among all facilities in 2015-2016 (Table 14).

Table 8 - Change in the Number of Cases and Acquisition Rate of Healthcare-associated CPGNB Colonization (Cat. 1a and 1b) by Type of Healthcare Facility, Québec, 2014-2015 to 2015-2016 (Acquisition Rate of Healthcare-Associated CPGNB Colonization per 10,000 patient days)

Type of Facility	2014-2015		2015-2016	
	Number of Colonizations	Acquisition Rate of HA-CPGNB Colonization	Number of Colonizations	Acquisition Rate of HA-CPGNB Colonization
Non-teaching (N = 42)	33	0.228 [0.157 ; 0.312]	50	0.343 [0.254 ; 0.445]
Teaching (N = 21)	25	0.130 [0.084 ; 0.186]	24	0.121 [0.077 ; 0.174]

Total (N = 63) * 58 0.172 [0.131 ; 0.219] 74 0.215 [0.169 ; 0.267]

* Number of facilities participating in each of the two years of surveillance.

Table 9 shows the number of non-teaching facilities that indicated the type of screening used at admission (non-teaching: 34 out of 51; teaching: 14 out of 22) and during hospitalization (non-teaching: 27 out of 51; teaching: 16 out of 22).

Table 9 - Number of Healthcare Facilities that Indicated the Type of Screening Procedure Used at Admission and During Hospitalization by Type of Facility, Québec, 2015-2016

	Number of Facilities That Indicated the Number of Screening Procedure Used*			
	At Admission	During Hospitalization	Not Indicated	Total
Non-teaching (N = 51)	34	27	9	37
Teaching (N = 22)	14	16	4	18
Total (N = 73)	48	43	13	55

* The "at admission" and "during hospitalization" categories are not mutually exclusives

Tables 10 and 11 feature the total number of screening tests performed at admission and during hospitalization, as well as the mean number of CPGNB screening tests per admission.

Table 10 - Total Number of Screening Tests Performed at Admission and During Hospitalization by Type of Healthcare Facility, Québec, 2015-2016

Type of Facility	Total Number of Screening Procedures			
	At Admission	During Hospitalization	Not Indicated	Total
Non-teaching	9,602	17,048	304	26,954
Teaching	14,814	20,916	1,618	37,348
Total	24,416	37,964	1,922	64,302

Table 11 - Mean Number of CPGNB Screening Tests by Type of Healthcare Facility, Québec, 2014-2015 (Mean CPGNB Screening Tests per Admission), Québec, 2015-2016

Type of Facility	Mean Number of CPGNB Screening Tests*		
	At Admission	During Hospitalization	Total
Non-teaching	0.038	0.068	0.108
Teaching	0.055	0.077	0.138
Total	0.047	0.073	0.124

* The "at admission" and "during hospitalization" categories are not mutually exclusives.

Microbiology

Figure 1 features the distribution of microorganisms isolated from all cases. A total of 111

microorganisms have been isolated from 98 colonizations. Identified microorganisms were *Citrobacter freundii* (44.1%), *Klebsiella pneumonia* (17.1%), *Enterobacter cloacae* (16.2%) or *Escherichia coli* (10.8%). For seven colonization cases, two microorganisms have been isolated, whereas for one colonization, a total of four distinct microorganisms have been isolated.

Figure 1 - Categories of Isolated Microorganisms for all Cases (n = 67), Québec, 2015-2016

Isolated Microorganisms - All Cases (n = 111)

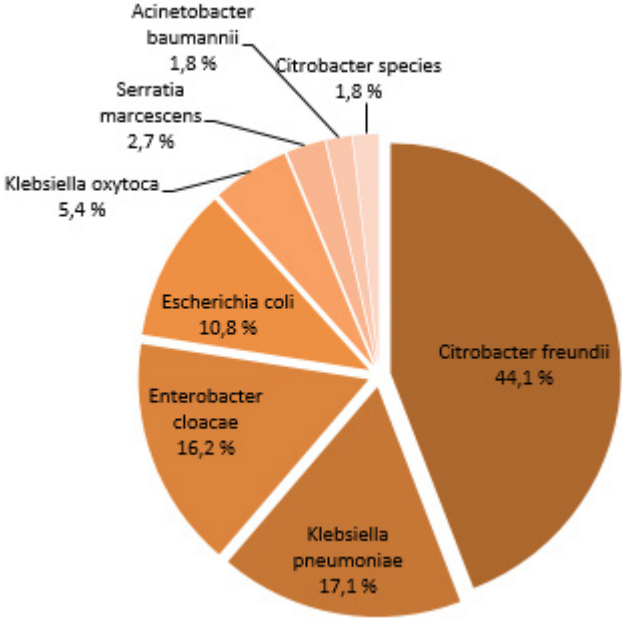


Table 12 presents the proportion of tested strains for sensitivity or resistance to carbapeneme (doripenem, ertapenem, imipenem and meropenem) as well as percentage of resistance among isolated strains.

All the *Enterobacter cloacae*, *Citrobacter freundii*, *Klebsiella oxytoca*, *Klebsiella pneumoniae* and *Serratia marcescens* were ertapenem resistant.

Table 12 - Resistance Profile Towards Carbapenem of CPGNB Microorganisms Isolated, Québec, 2015-2016

Microorganism	Isolated		Tested		Resistants	
	N	Antibiotique	N	%	N	%
<i>Acinetobacter baumannii</i>	2	Imipénem	1	50.0%	1	100.0%
		Méropénem	1	50.0%	1	100.0%
<i>Citrobacter freundii</i>	49	Doripénem	1	2.0%	1	100.0%
		Ertapénem	46	93.9%	46	100.0%
		Imipénem	3	6.1%	2	66.7%
		Méropénem	49	100.0%	48	98.0%
<i>Enterobacter cloacae</i>	18	Ertapénem	17	94.4%	17	100.0%

		Imipénem	7	38.9%	7	100.0%
		Méropénem	17	94.4%	17	100.0%
<i>Escherichia coli</i>	12	Ertapénem	11	91.7%	10	90.9%
		Imipénem	9	75.0%	9	100.0%
		Méropénem	12	100.0%	12	100.0%
<i>Klebsiella oxytoca</i>	6	Ertapénem	5	83.3%	5	100.0%
		Imipénem	4	66.7%	4	100.0%
		Méropénem	4	66.7%	4	100.0%
<i>Klebsiella pneumoniae</i>	19	Ertapénem	19	100.0%	19	100.0%
		Imipénem	12	63.2%	12	100.0%
		Méropénem	19	100.0%	19	100.0%
<i>Serratia marcescens</i>	3	Ertapénem	2	66.7%	2	100.0%
		Imipénem	1	33.3%	1	100.0%
		Méropénem	2	66.7%	2	100.0%
<i>Citrobacter species</i>	2	Ertapénem	2	100.0%	2	100.0%
		Méropénem	2	100.0%	2	100.0%

Note: Only microorganisms that have been tested for an antibiotic are represented.

Table 13 shows the carbapenemase gene detected for every isolated microorganisms. The majority of carbapenemase gene associated to different microorganism is KPC. One strain of *Enterobacter cloacae*, six strains of *Escherichia coli* and two strain of *Klebsiella pneumoniae* produced NDM. One *Klebsiella pneumoniae* strain produced both OXA-48 and NDM.

Table 13 - Distribution of Carbapenemase-encoding Genes from Reported Microorganisms, Québec, 2015-2016

Microorganism	Isolated	Gene	Gene frequencye	
			N	%
<i>Acinetobacter baumannii</i>	2	OXA-23	1	50.0
<i>Citrobacter freundii</i>	49	KPC	47	95.9
		OXA-48	2	4.1
<i>Citrobacter species</i>	2	KPC	2	100.0
<i>Enterobacter cloacae</i>	18	KPC	15	83.3
		NDM	1	5.6
		NMC	1	5.6
<i>Escherichia coli</i>	12	KPC	6	50.0

		NDM	6	50.0
<i>Klebsiella oxytoca</i>	6	KPC	5	83.3
<i>Klebsiella pneumoniae</i>	19	KPC	14	73.7
		OXA-48	2	10.5
		NDM	2	10.5
		NDM / OXA-48	1	5.3
<i>Serratia marcescens</i>	3	KPC	1	33.3
		SME	1	33.3

KPC : *Klebsiella pneumoniae* carbapenemase (Class A).

NDM : New-dehli metallo-b-lactamase (Class B).

NMC : Not metalloenzyme carbapenemase.

OXA-23 : Oxacillinase-23 (class D).

OXA-48 : Oxacillinase-48 (Class D).

SME : *Serratia marcescens* enzyme.

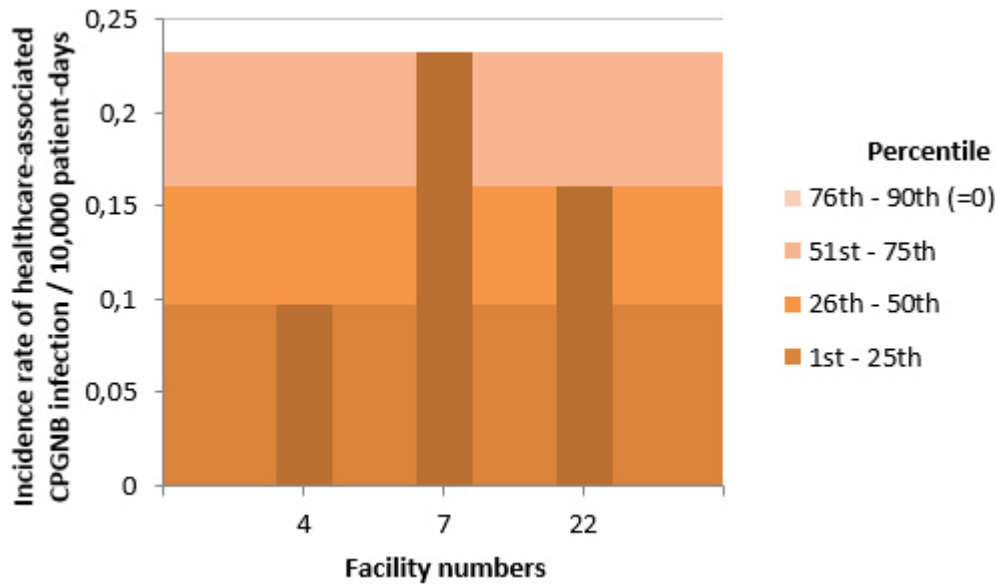
Data per Facility

The incidence rate of healthcare-associated CPGNB infection and the percentile rankings by type of facility are shown in figure 2 and 3. Figure 4 and 5 present the rate of acquisition of healthcare-associated CPGNB colonization by type of facility.

Figure 2 - Incidence Rate and Percentile Ranking of Healthcare-Associated CPGNB infection (Cat. 1a and 1b) for Non-Teaching Healthcare Facilities, Québec, 2015-2016 (Incidence Rate per 10,000 Patient Days)

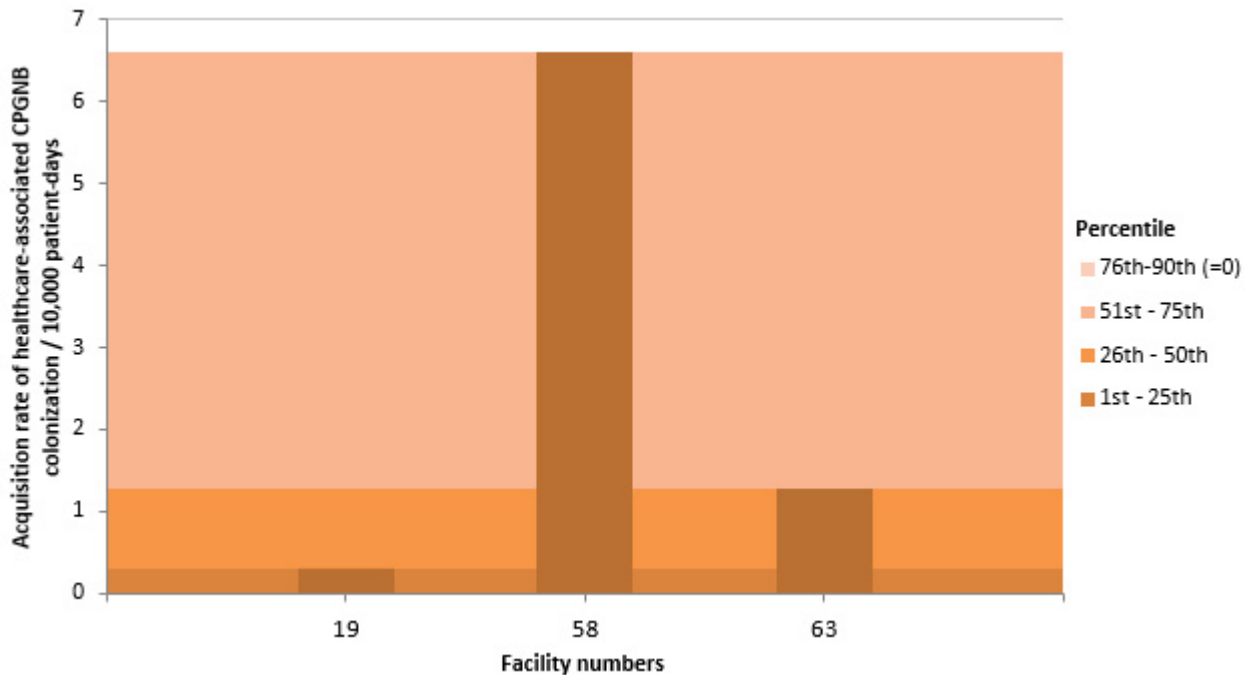
NB: Non-teaching facilities reported no cases of infection in 2015-2016.

Figure 3 - Incidence Rate and Percentile Ranking of Healthcare-Associated CPGNB Infection (Cat. 1a and 1b) for Teaching Healthcare Facilities, Québec, 2015-2016 (Incidence Rate per 10,000 Patient Days)



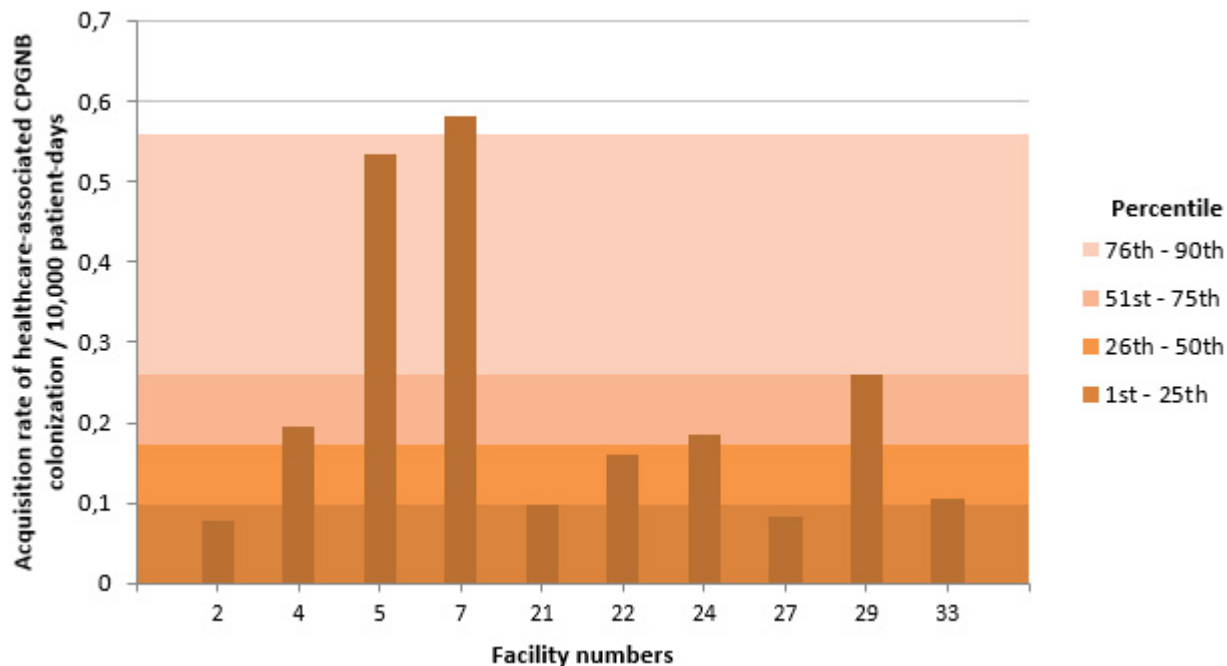
NB: Facilities 2, 3, 5, 8, 12, 13, 15, 18, 20, 21, 24, 27, 28, 29, 30, 31, 33, 76 and 118 did not report any cases of infection in 2015-2016.

Figure 4 - Acquisition Rate of Healthcare-Associated CPGNB Colonization (Cat.1a and 1b) for Non-Teaching Healthcare Facilities, Québec, 2015-2016 (Acquisition Rate of Healthcare-Associated CPGNB Colonization per 10,000 Patient Days)



NB: Facilities 9, 11, 16, 23, 26, 32, 34, 35, 37, 39, 40, 42, 44, 45, 46, 47, 49, 51, 52, 53, 56, 59, 61, 65, 67, 70, 71, 74, 75, 77, 81, 82, 84, 85, 86, 88, 89, 91, 97, 99, 100, 101, 103, 107, 109, 112, 113 and 130 did not report any cases of colonization in 2015-2016.

Figure 5 - Acquisition Rate of Healthcare-Associated CPGNB Colonization (Cat.1a and 1b) for Teaching Healthcare Facilities, Québec, 2015-2016 (Acquisition Rate of Healthcare-Associated CPGNB Colonization per 10,000 Patient Days)



NB: Facilities 3, 8, 12, 13, 15, 18, 20, 28, 30, 31, 76 and 118 did not report any cases of colonization in 2015-2016.

At the local level, in 2015-2016, the incidence rate of healthcare-associated CPGNB infections ranged from 0 to 0.233 per 10,000 patient days, whereas the acquisition rate of healthcare-associated CPGNB colonization ranged from 0 to 6,603 per 10,000 patient days. A total of 60 facilities (82%) did not report any healthcare-associated CPGNB infection or colonization in 2015-2016. A detailed summary of the surveillance data for HA-CPGNB infection by healthcare facility can be found in table 14.

Table 14 - Incidence Rate of Healthcare-Associated CPGNB Infection (cat. 1a and 1b), Acquisition Rate of Healthcare-Associated CPGNB Colonization and Mean CPGNB Screening Tests by Admission and by Facility, Québec, 2015-2016 (Incidence Rate per 10,000 Patient Days [95% CI]; Acquisition Rate of Colonization per 10,000 Patient Days)

HR	Facility		Incidence Rate of HA-CPGNB Infection (cat. 1a and 1b) [95% CI]	Acquisition Rate of HA-CPGNB Colonization (cat. 1a and 1b) [95% CI]	Mean CPGNB Screening Tests per Admission*
	Number	Name			
1	16	HÔPITAL RÉGIONAL DE RIMOUSKI	0	0	0.083
	32	CENTRE HOSPITALIER RÉGIONAL DU GRAND-PORTAGE	0	0	0.056
	61	HÔPITAL NOTRE-DAME-DE-FATIMA	0	0	0.079
	71	HÔPITAL DE MATANE	0	0	0.035
	77	HÔPITAL D'AMQUI	0	0	0
	84	HÔPITAL DE NOTRE-DAME-DU-LAC	0	0	0.037
		BAS-SAINT-LAURENT	0	0	0.061
	20	HÔPITAL DE CHICOUTIMI	0	0	0.001
	67	HÔPITAL ET CENTRE DE RÉADAPTATION DE JONQUIÈRE	0	0	0.013
	74	HÔPITAL DE DOLBEAU-MISTASSINI	0	0	0.005
2	88	HÔPITAL. CLSC ET CENTRE D'HÉBERGEMENT DE ROBERVAL	0	0	0
	100	HÔPITAL DE LA BAIE	0	0	0
	112	HÔPITAL D'ALMA	0	0	0

HR	Facility		Incidence Rate of HA-CPGNB Infection (cat. 1a and 1b) [95% CI]	Acquisition Rate of HA-CPGNB Colonization (cat. 1a and 1b) [95% CI]	Mean CPGNB Screening Tests per Admission*
	Number	Name			
		SAGUENAY-LAC-SAINT-JEAN	0	0	0.002
	2	HÔPITAL DE L'ENFANT-JÉSUS	0	0.078	0.077
	7	PAVILLON L'HÔTEL-DIEU DE QUÉBEC	0.233 [0.022 ; 0.668]	0.582	0.103
	24	HÔPITAL DU SAINT-SACREMENT	0	0.184	0.026
3	27	PAVILLON CENTRE HOSPITALIER DE L'UNIVERSITÉ LAVAL	0	0.084	0.017
	28	PAVILLON SAINT-FRANCOIS D'ASSISE	0	0	0.023
	33	INSTITUT UNIVERSITAIRE DE CARDIOLOGIE ET DE PNEUMOLOGIE DE QUÉBEC	0	0.105	0.112
	59	HÔPITAL DE BAIE-SAINT-PAUL	0	0	0.014
	86	HÔPITAL DE LA MALBAIE	0	0	0.009
		CAPITALE-NATIONALE	0.034 [0.003 ; 0.097]	0.153	0.057
	23	HÔTEL-DIEU D'ARTHABASKA	0	0	0.008
	31	PAVILLON SAINTE-MARIE	0	0	0.002
4	41	HÔPITAL DU CENTRE-DE-LA-MAURICIE	-	-	-
	44	HÔPITAL SAINTE-CROIX	0	0	0.034
	85	CENTRE DE SANTÉ ET DE SERVICES SOCIAUX DU HAUT-SAINT-AURICE	0	0	0
		MAURICIE ET CENTRE-DU-QUÉBEC	0	0	0.011
	15	HÔPITAL FLEURIMONT	0	0	0
	30	HÔTEL-DIEU DE SHERBROOKE	0	0	0
5	46	HÔPITAL DE GRANBY	0	0	0
	49	CENTRE DE SANTÉ ET DE SERVICES SOCIAUX MEMPHRÉMAGOG	0	0	0
	75	CENTRE DE SANTÉ ET DE SERVICES SOCIAUX DU GRANIT	0	0	0
	99	HÔPITAL BROME-MISSISQUOI-PERKINS	0	0	0.001
		ESTRIE	0	0	0
	3	GLEN - ROYAL VICTORIA	0	0	0.052
	4	HÔPITAL NOTRE-DAME DU CHUM	0.097 [0 ; 0.381]	0.195	0.046
	5	HÔPITAL GÉNÉRAL JUIF	0	0.535	1.375
	6	GLEN - ENFANTS	-	-	-
	8	PAVILLON MAISONNEUVE/PAVILLON MARCEL-LAMOUREUX	0	0	0.001
	12	CENTRE HOSPITALIER UNIVERSITAIRE SAINTE-JUSTINE	0	0	0
	13	INSTITUT DE CARDIOLOGIE DE MONTRÉAL	0	0	0.064
	21	HÔPITAL SAINT-LUC DU CHUM	0	0.099	0.063
	22	HÔTEL-DIEU DU CHUM	0.161 [0 ; 0.630]	0.161	0.076
6	25	HÔPITAL DU SACRÉ-COEUR DE MONTRÉAL	-	-	-
	26	HÔPITAL DE VERDUN	0	0	0.005
	29	HÔPITAL GÉNÉRAL DE MONTRÉAL	0	0.259	0.218
	34	HÔPITAL SANTA CABRINI	0	0	0
	36	HÔPITAL GÉNÉRAL DU LAKESHORE	-	-	-
	38	HÔPITAL JEAN-TALON	-	-	-
	48	CENTRE HOSPITALIER DE ST. MARY	-	-	-
	76	HOPITAL DE LACHINE	0	0	0
	80	HÔPITAL FLEURY	-	-	-
	83	HÔPITAL DE LASALLE	-	-	-
	118	HÔPITAL NEUROLOGIQUE DE MONTRÉAL	0	0	0.027
		MONTRÉAL	0.019 [0.002 ; 0.054]	0.141	0.246

HR	Facility		Incidence Rate of HA-CPGNB Infection (cat. 1a and 1b) [95% CI]	Acquisition Rate of HA-CPGNB Colonization (cat. 1a and 1b) [95% CI]	Mean CPGNB Screening Tests per Admission*
	Number	Name			
	39	HÔPITAL DE GATINEAU	0	0	0.001
	40	HÔPITAL DE HULL	0	0	0.005
7	51	HÔPITAL DE MANIWAKI	0	0	0
	95	HÔPITAL DU PONTIAC	-	-	-
	111	HÔPITAL DE PAPINEAU	-	-	-
		OUTAOUAIS	0	0	0.002
	47	HÔPITAL DE ROUYN-NORANDA	0	0	0.003
	52	HÔPITAL D'AMOS	0	0	0
8	65	HÔPITAL ET CLSC DE VAL-D'OR	0	0	0.005
	70	CENTRE DE SOINS DE COURTE DURÉE LA SARRE	0	0	0
	82	PAVILLON SAINTE-FAMILLE	0	0	0.015
		ABITIBI-TÉMISCAMINGUE	0	0	0.002
	64	HÔPITAL LE ROYER	-	-	-
9	72	HÔPITAL ET CENTRE D'HÉBERGEMENT DE SEPT-ÎLES	-	-	-
		CÔTE-NORD	-	-	-
10	96	CENTRE DE SANTÉ DE CHIBOUGAMAU	-	-	-
		NORD-DU-QUÉBEC	-	-	-
	53	HÔPITAL DE CHANDLER	0	0	0
	91	HÔPITAL HÔTEL-DIEU DE GASPÉ	0	0	0.229
11	97	HÔPITAL DE MARIA	0	0	0.114
	107	HÔPITAL DE L'ARCHIPEL	0	0	0.039
	109	HÔPITAL DE SAINTE-ANNE-DES-MONTS	0	0	0.074
		GASPÉSIE-ÎLES-DE-LA-MADELEINE	0	0	0.100
	18	HÔTEL-DIEU DE LÉVIS	0	0	0.028
12	63	HÔPITAL DE SAINT-GEORGES	0	1.274	0.385
	89	HÔPITAL DE MONTMAGNY	0	0	0.014
	113	HÔPITAL DE THETFORD MINES	0	0	0.018
		CHAUDIÈRE-APPALACHES	0	0.324	0.118
13	19	HÔPITAL CITÉ DE LA SANTÉ	0	0.293	0.132
		LAVAL	0	0.293	0.132
14	11	HÔPITAL PIERRE-LE GARDEUR	0	0	0.017
	14	CENTRE HOSPITALIER RÉGIONAL DE LANAUDIÈRE	-	-	-
		LANAUDIÈRE	0	0	0.017
	45	HÔPITAL DE SAINT-EUSTACHE	0	0	0.004
	56	CENTRE DE SANTÉ ET DE SERVICES SOCIAUX D'ARGENTEUIL	0	0	0.050
15	81	HÔPITAL DE MONT-LAURIER	0	0	0.059
	101	HÔPITAL RÉGIONAL DE SAINT-JÉRÔME	0	0	0.003
	103	HÔPITAL LAURENTIEN	0	0	0.003
		LAURENTIDES	0	0	0.008

HR	Facility		Incidence Rate of HA-CPGNB Infection (cat. 1a and 1b) [95% CI]	Acquisition Rate of HA-CPGNB Colonization (cat. 1a and 1b) [95% CI]	Mean CPGNB Screening Tests per Admission*
	Number	Name			
	1	HÔPITAL CHARLES LEMOYNE	-	-	-
	9	HÔPITAL DU HAUT-RICHELIEU	0	0	0
	10	HÔPITAL PIERRE-BOUCHER	-	-	-
16	35	HÔPITAL HONORÉ-MERCIER	0	0	0.016
	37	HÔTEL-DIEU DE SOREL	0	0	0
	42	CENTRE HOSPITALIER ANNA-LABERGE	0	0	0.101
	58	HÔPITAL DU SUROÎT	0	6.603	2.038
	130	HÔPITAL BARRIE MEMORIAL	0	0	1.211
		MONTÉRÉGIE		0	1.167
	Total		0.011 [0.003 ; 0.024]	0.197	0.124

* Number of screening test divided by number of admissions.

- Healthcare facilities that did not participate in 2015-2016.

HR: Health region.

Author

Comité de surveillance provinciale des infections nosocomiales (SPIN)

Editorial committee

Christophe Garenc, Direction des risques biologiques et de la santé au travail, Institut national de santé publique du Québec

Danielle Moisan, Centre hospitalier régional du Grand-Portage

Muleka Ngenda-Muadi, Direction des risques biologiques et de la santé au travail, Institut national de santé publique du Québec

Mélissa Trudeau, Direction des risques biologiques et de la santé au travail, Institut national de santé publique du Québec

Isabelle Rocher, Direction des risques biologiques et de la santé au travail, Institut national de santé publique du Québec

Christian Lavallée, Hôpital Maisonneuve-Rosemont

Jasmin Villeneuve, Direction des risques biologiques et de la santé au travail, Institut national de santé publique du Québec

Source URL (modified on 08/16/2018 - 21:12):

<https://www.inspq.qc.ca/en/nosocomial-infections/spin-bgnpc/surveillance-results-2015-2016>

Links

[1] <https://www.inspq.qc.ca/infections-nosocomiales/spin/bgnpc/surveillance-2015-2016>

[2] <https://www.inspq.qc.ca/en/file/10897/download?token=q2rfkkgy>