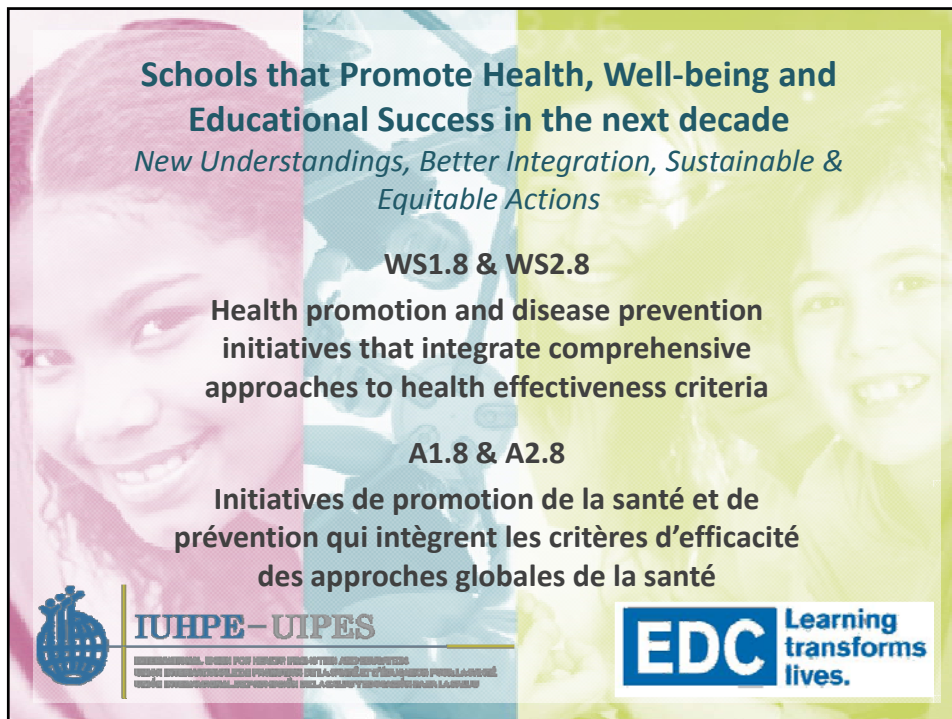



Cette présentation a été effectuée le 28 novembre 2011, au cours de la Rencontre internationale *La prochaine décennie pour les écoles favorisant la santé, le bien-être et la réussite éducative* dans le cadre des 15^{es} Journées annuelles de santé publique (JASP 2011). L'ensemble des présentations est disponible sur le site Web des JASP à la section *Archives* au : <http://jasp.inspq.qc.ca/>.




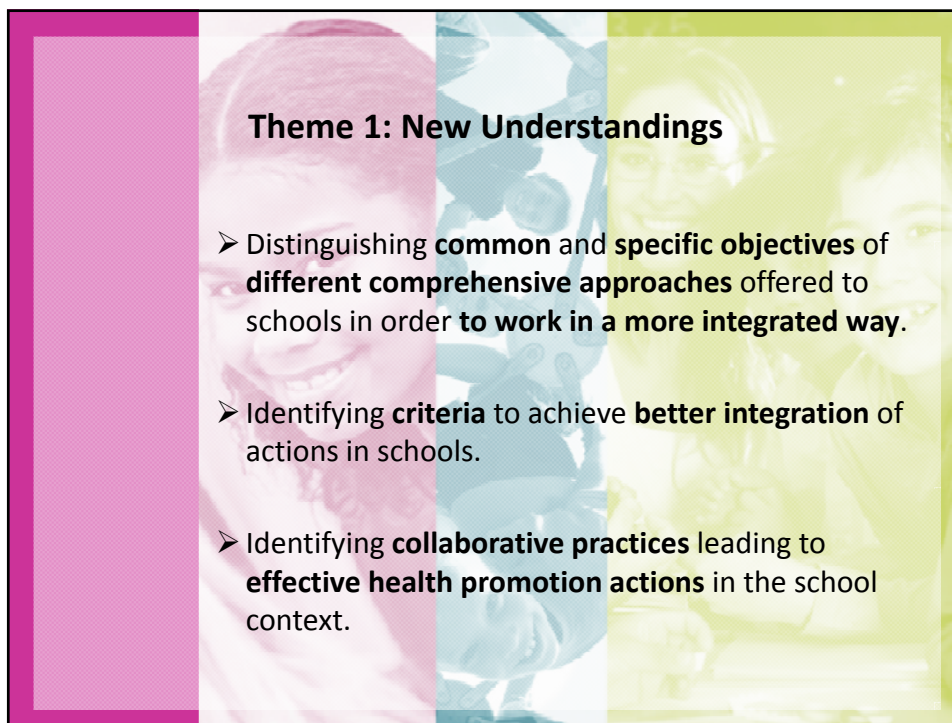
Schools that Promote Health, Well-being and Educational Success in the next decade
New Understandings, Better Integration, Sustainable & Equitable Actions

WS1.8 & WS2.8
Health promotion and disease prevention initiatives that integrate comprehensive approaches to health effectiveness criteria

A1.8 & A2.8
Initiatives de promotion de la santé et de prévention qui intègrent les critères d'efficacité des approches globales de la santé

 **IUHPE-UIPES**
INTERNATIONAL UNION FOR HEALTH PROMOTION AND DISEASE PREVENTION
UNION INTERNATIONALE POUR LA PROMOTION DE LA SANTÉ ET LA PRÉVENTION DES MALADIES

 **EDC** Learning transforms lives.



Theme 1: New Understandings

- Distinguishing **common** and **specific objectives** of **different comprehensive approaches** offered to schools in order **to work in a more integrated way**.
- Identifying **criteria** to achieve **better integration** of actions in schools.
- Identifying **collaborative practices** leading to **effective health promotion actions** in the school context.

Workshop outline	
15 minutes	1 - Focusing on the SCHOOL in Health Promoting Schools. Alberta, Canada (<i>Doug Gleddie and Antony Card</i>)
15 minutes	2 - A Drug Prevention Strategy for Canada's Youth. Ontario, Canada (<i>Asma Fakhri</i>)
10 minutes	3- Implementing comprehensive school health programs— a workshop for practitioners. Global (<i>Claire Blanchard, Carmen Aldinger & Ian Young</i>)
20 minutes	4- Group Work
20 minutes	5- Discussions within the panel (comprising all four presenters and moderators) and the audience
10 minutes	6- Conclusions, key messages, concrete suggestions to explore

Theme 2: Better Integration of approaches, of actors/stakeholders, of actions

- Distinguishing **common** and **specific objectives** of **different comprehensive approaches** offered to schools in order **to work in a more integrated way**.
- Identifying **criteria** to achieve **better integration** of actions in schools.
- Identifying **collaborative practices** leading to **effective health promotion actions** in the school context.


Workshop outline	
15 minutes	1 - Mental Health: Whole school integration, an Australian model. Australia (<i>Jo Mason</i>)
15 minutes	2 - Homophobie en milieu scolaire : Interventions à éviter et à préconiser. Québec, Canada (<i>Gabrielle Richard</i>)
10 minutes	3- Implementing comprehensive school health programs— a workshop for practitioners. Global (<i>Claire Blanchard, Carmen Aldinger & Ian Young</i>)
20 minutes	4- Group Work
20 minutes	5- Discussions within the panel (comprising all four presenters and moderators) and the audience
10 minutes	6- Conclusions, key messages, concrete suggestions to explore

**Implementing Health Promoting Schools /
comprehensive school health programs
a workshop for practitioners**

Claire Blanchard (IUHPE Programme Officer)
cblanchard@iuhpe.org

*Carmen Aldinger (Associate Center Director, Global Programs,
Education Development Center, Inc.)*
caldinger@edc.org

Ian Young (International Consultant)
imyong@blueyonder.co.uk



IUHPE – UIPES
INTERNATIONAL UNION FOR HEALTH PROMOTING SCHOOLS
UNION INTERNATIONALE POUR LA PROMOTION DE LA SANTÉ ET LE BIEN-ÊTRE
POUR LES ÉCOLES, LES UNIVERSITÉS, LES MILIEUX DE TRAVAIL ET LES MILIEUX COMMUNAUTAIRES

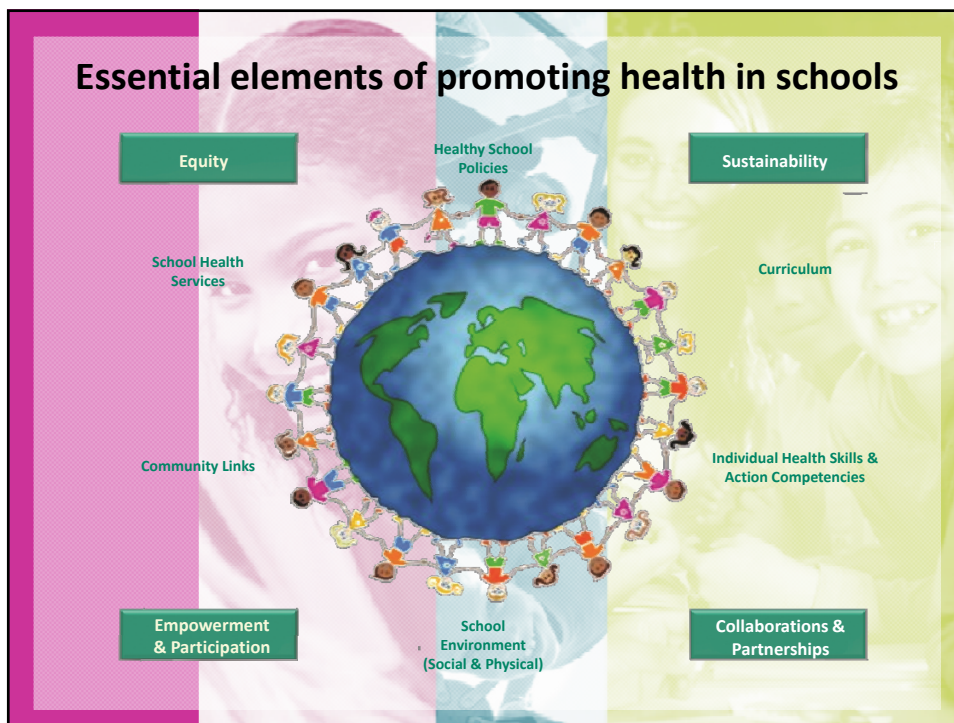


EDC Learning
transforms
lives.

A number of guidelines and existing resources



Essential elements of promoting health in schools





What works

- Developing and maintaining a **democratic** and **participatory school community**.
- Developing **partnerships between** the policy makers of both the **education and health** sectors.
- Ensuring **students** and **parents** feel they have some sense of **ownership** in the life of the school.
- Implementing a **diversity of learning and teaching strategies**.
- Providing adequate **time** for **class-based** activities, organisation and coordination, and **out-of-class activities**.
- Exploring **health issues within the context** of the students' lives and community.
- Using a **whole-school approach** rather than primarily a classroom learning approach.

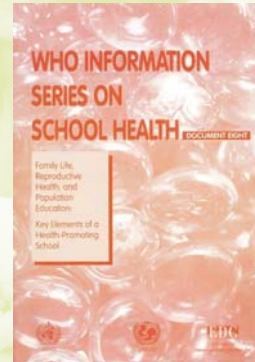


What works (cont.)

- Providing **ongoing capacity-building** opportunities for **teachers** and associated **staff**.
- **Creating** an excellent social **environment** which **fosters** open and honest **relationships** within the school community.
- Ensuring a **consistency** of **approach** across the school and between the school, home, and wider community.
- Developing both a **sense of direction** in the goals of the school and clear **and unambiguous leadership** and **administrative support**.
- Providing **resources** that **complement the fundamental role of the teacher** and which have a sound theoretical and accurate factual base.
- **Creating a climate** where there are high expectations of students in their social interactions and educational attainments.

World Health Organization Information Series on School Health

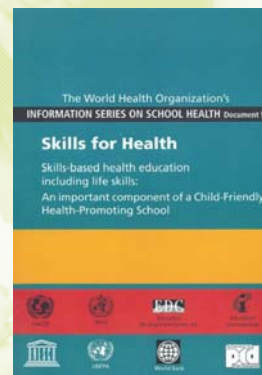
- Selected health issues as entry points:
 - Family life, reproductive health
 - Healthy nutrition
 - Malaria prevention
 - Oral health
 - HIV/AIDS/STDs
 - Physical activity
 - Helminth infections
 - Sun protection
 - Tobacco use
 - Violence prevention



World Health Organization Information Series on School Health

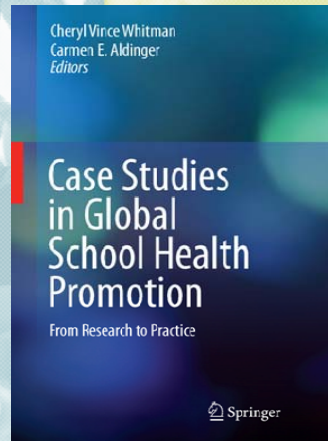
- Addressing components of school health:
 - Psycho-social school environment
 - Physical school environment
 - Skills-based health education

http://www.who.int/school_youth_health/resources/information_series/en/index.html



Case studies in global school health promotion

Case studies from 26 countries around the world analyzed by evidence-based factors for implementation of policy and practice



Building on specific examples: Using experience to identify universal criteria

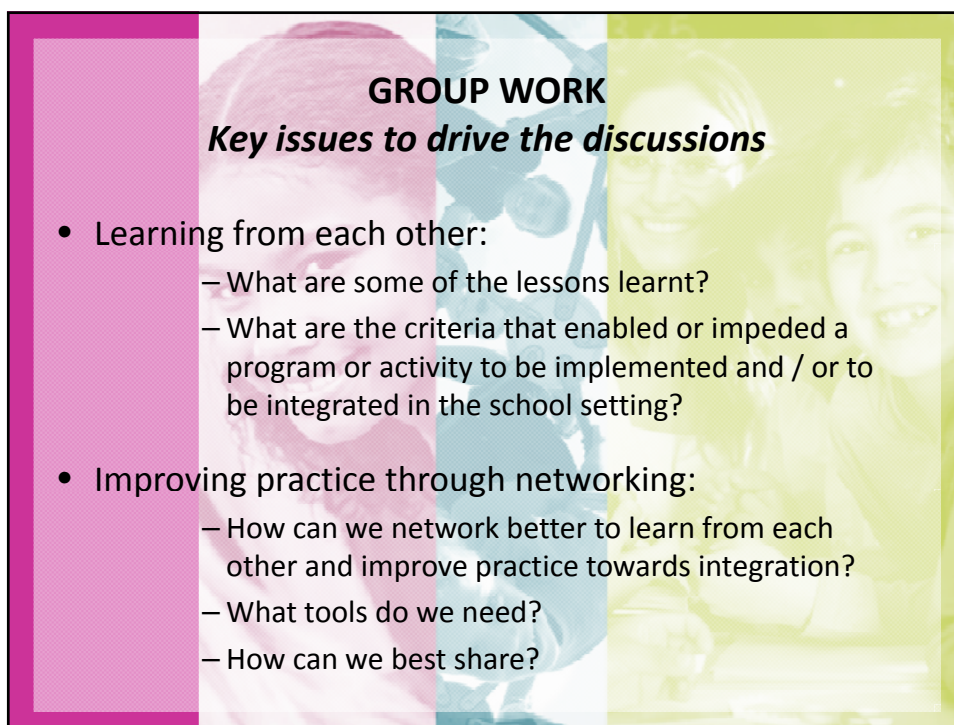
Key issues to drive the discussions

- Learning from each other:
 - What are some of the lessons learnt?
 - What are the criteria that enabled or impeded a program or activity to be implemented and / or to be integrated in the school setting?
- Improving practice through networking:
 - How can we network better to learn from each other and improve practice towards integration?
 - What tools do we need?
 - How can we best share?



Discussions

- Group work
→ 20 minutes
- Discussions with presenters, moderators and the audience
→ 20 minutes
- Conclusions, key messages, concrete suggestions to explore
→ 10 minutes



GROUP WORK

Key issues to drive the discussions

- Learning from each other:
 - What are some of the lessons learnt?
 - What are the criteria that enabled or impeded a program or activity to be implemented and / or to be integrated in the school setting?
- Improving practice through networking:
 - How can we network better to learn from each other and improve practice towards integration?
 - What tools do we need?
 - How can we best share?

DISCUSSIONS
Key points

-
-
-
-
-
-
-
-
-
-

CONCLUSIONS, KEY MESSAGES, CONCRETE SUGGESTIONS

-
-
-
-
-
-
-
-
-
-

Thank you and enjoy the rest of the event!
Claire, Carmen and Ian

cblanchard@iuhpe.org
caldinger@edc.org
imyong@blueyonder.co.uk

 **IUHPE-UIPES**
INTERNATIONAL UNION FOR HEALTH PROMOTION AND PREVENTION
UNION INTERNATIONALE POUR LA PROMOTION DE LA SANTE ET LA PREVENTION
UNION INTERNACIONAL DE PROMOCION DE LA SALUD Y PREVENCIÓN

 **EDC** Learning
transforms
lives.